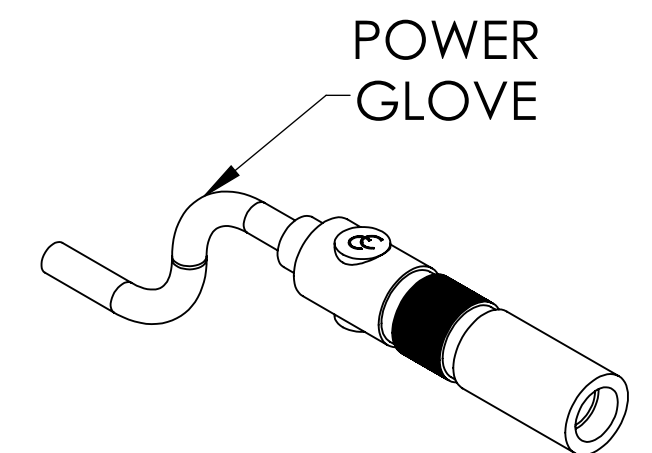
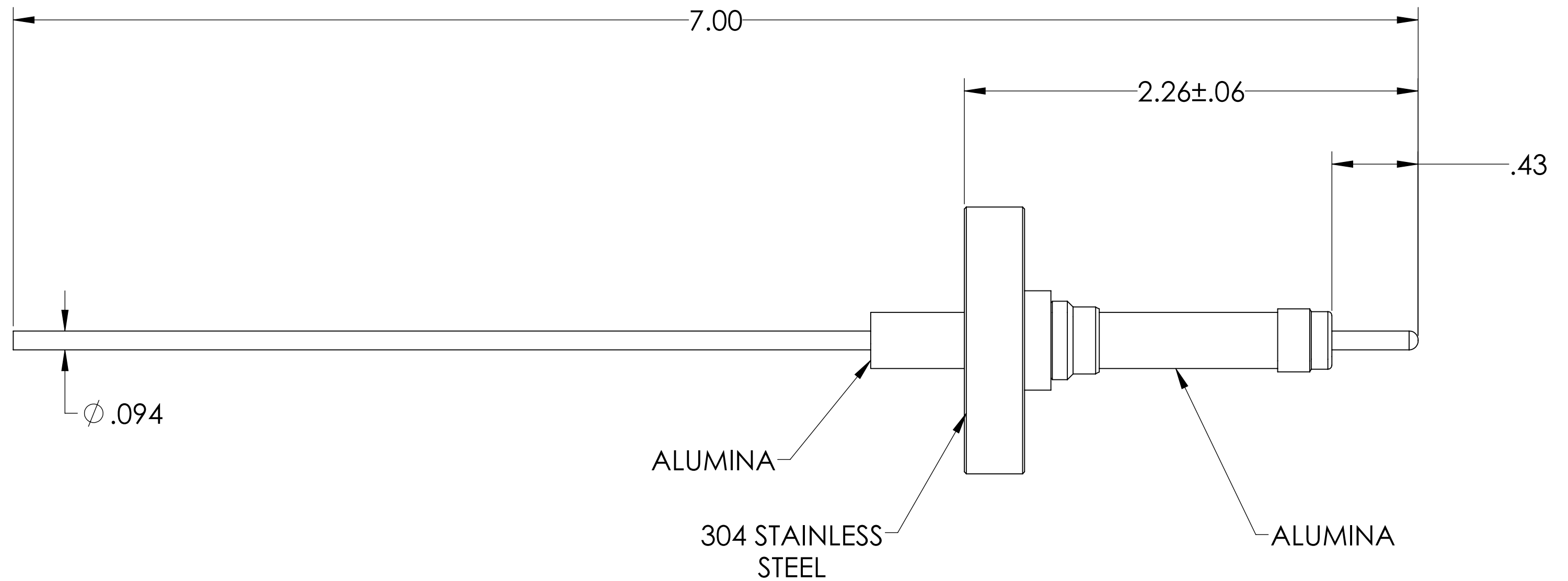
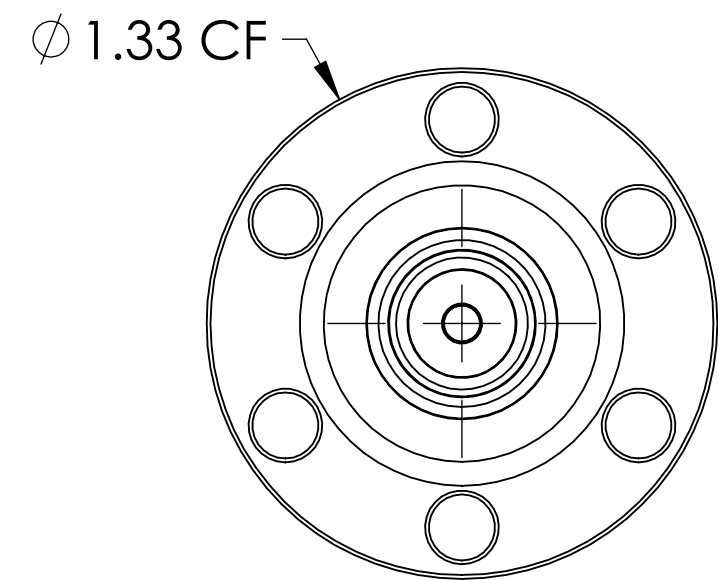
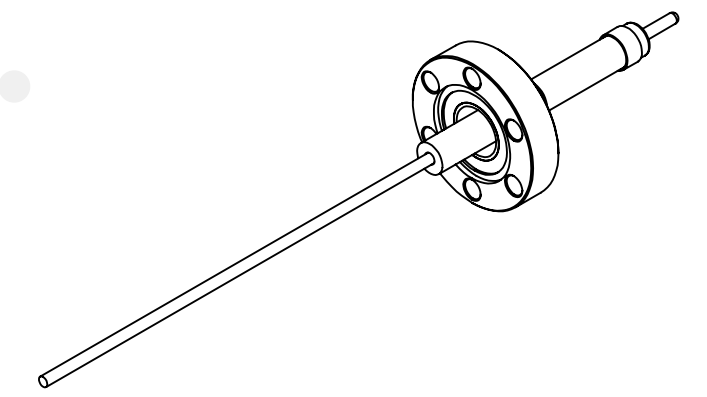


MPF PRODUCTS INC.



- NOTE:**
1. VOLTAGE: 20,000 VOLTS DC
 2. CURRENT: 30 AMPS
 3. TEMPERATURE RATING: -100 TO 450°C

Power Feedthrough W/ Power Glove, 20 KV, 1 Pin, 0.094" Copper Conductors, 1.33" Conflat Flange, UHV Rated, Bakeable to 450°C

UNLESS OTHERWISE SPECIFIED:		QUOTATION #		N/A	
DIMENSIONS ARE IN INCHES TOLERANCES:		NAME	DATE	MPF PRODUCTS INC.	
ANGULAR: MACH ± 1/2°		DRAWN	9/11/2015		
TWO PLACE DECIMAL ± .030		CHECKED	9/11/2015		
THREE PLACE DECIMAL ± .015		ENG APPR.	9/11/2015		
MATERIAL		THIRD ANGLE:		TITLE: POWER GLOVE, 20 KV, 1 PIN, 1.33" CONFLAT FLANGE DOWNLOADED FROM MPFPI.COM DWG. NO. A5979-1-CF REV.	
FINISH					
PLATING		APPLICATION			
		NEXT ASSY USED ON			
		SURFACE FINISH: 63 OR BETTER		TUESDAY, JANUARY 22, 2019 12:42:58 PM	
		UNLESS OTHERWISE SPECIFIED:		ALL DIAMETERS CONCENTRIC WITHIN .005. REMOVE ALL BURRS AND SHARP EDGES	