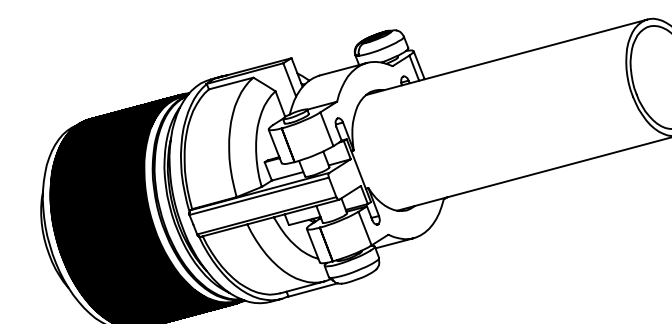
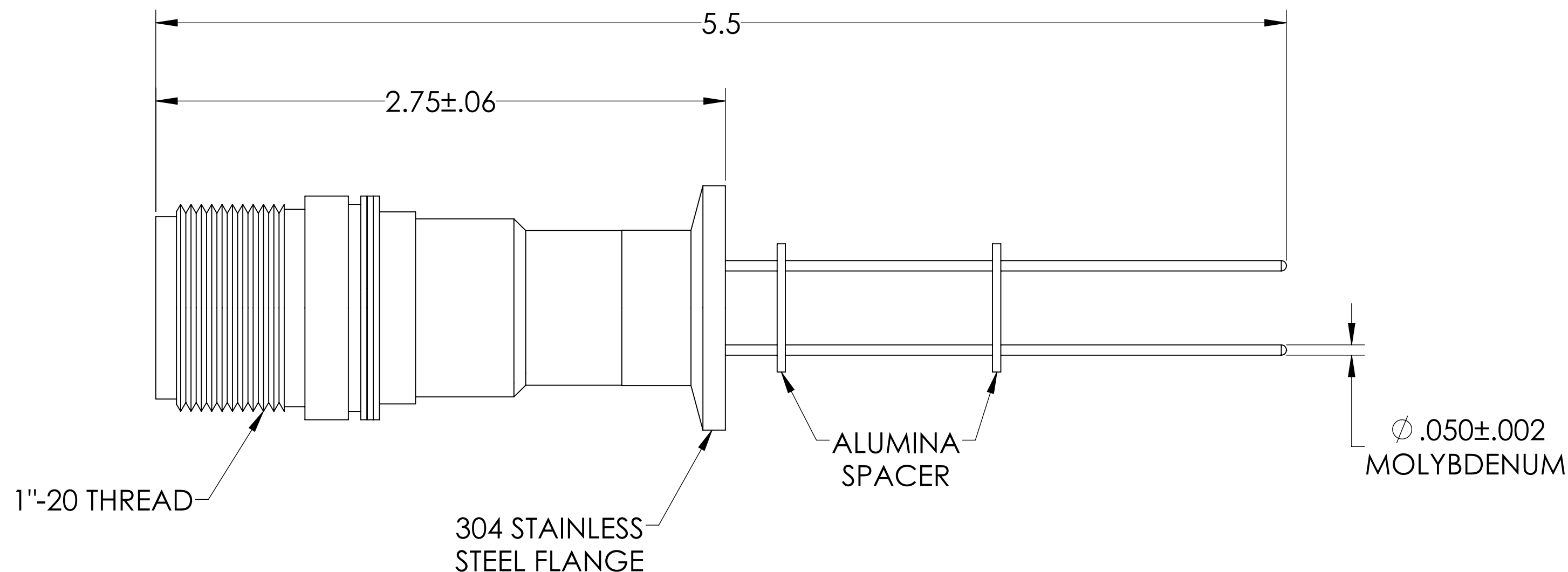
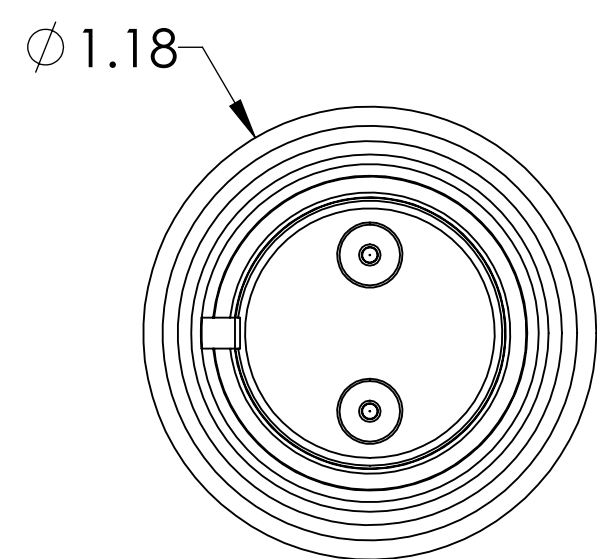
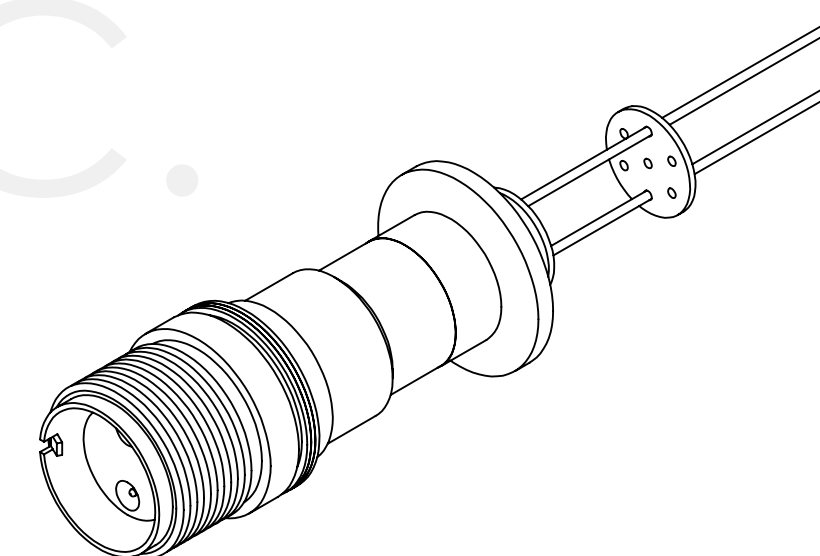


MPF PRODUCTS INC.



SPECIFICATIONS:

1. VOLTAGE: 12,000 VOLTS DC
2. CURRENT: 7.5 AMPS PER PIN
3. TEMPERATURE RATING: -100 TO 450°C WITHOUT CONNECTOR
4. LEAK RATE < 1X10-9 ATM CC/SEC HE

MS Series, Multipin Feedthrough w/ Air-side Connector, 2 Pins, 12KV, 7.5 Amps per Pin, 0.05" Moly Conductors, 1.18" QF/KF

UNLESS OTHERWISE SPECIFIED:		QUOTATION #		N/A	
DIMENSIONS ARE IN INCHES TOLERANCES:		NAME	DATE	MPF PRODUCTS INC.	
ANGULAR: MACH ± 1/2°		DRAWN	9/11/2015		
TWO PLACE DECIMAL ± .030		CHECKED	9/11/2015		
THREE PLACE DECIMAL ± .015		ENG APPR.	WJ 9/11/2015		
MATERIAL		THIRD ANGLE:		TITLE: MULTIPIN, 2 PINS, 12KV, 7.5 A, .118" QF/KF	
FINISH		APPLICATION			
PLATING		NEXT ASSY USED ON			
SURFACE FINISH: 63 OR BETTER		SURFACE FINISH: 63 OR BETTER		DOWNLOADED FROM MPFPI.COM	
UNLESS OTHERWISE SPECIFIED:		UNLESS OTHERWISE SPECIFIED:		DWG. NO. A6077-1-QF	
ALL DIAMETERS CONCENTRIC WITHIN .005. REMOVE ALL BURRS AND SHARP EDGES		ALL DIAMETERS CONCENTRIC WITHIN .005. REMOVE ALL BURRS AND SHARP EDGES		REV	
		Thursday, February 7, 2019 8:59:23 AM			