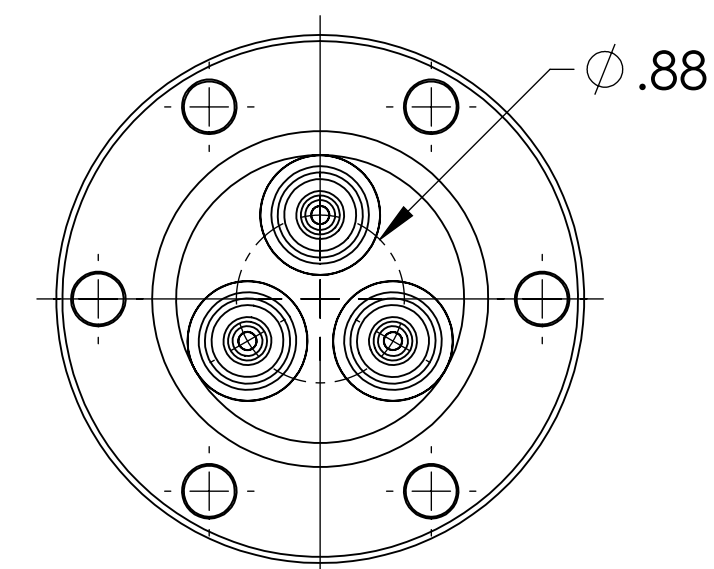
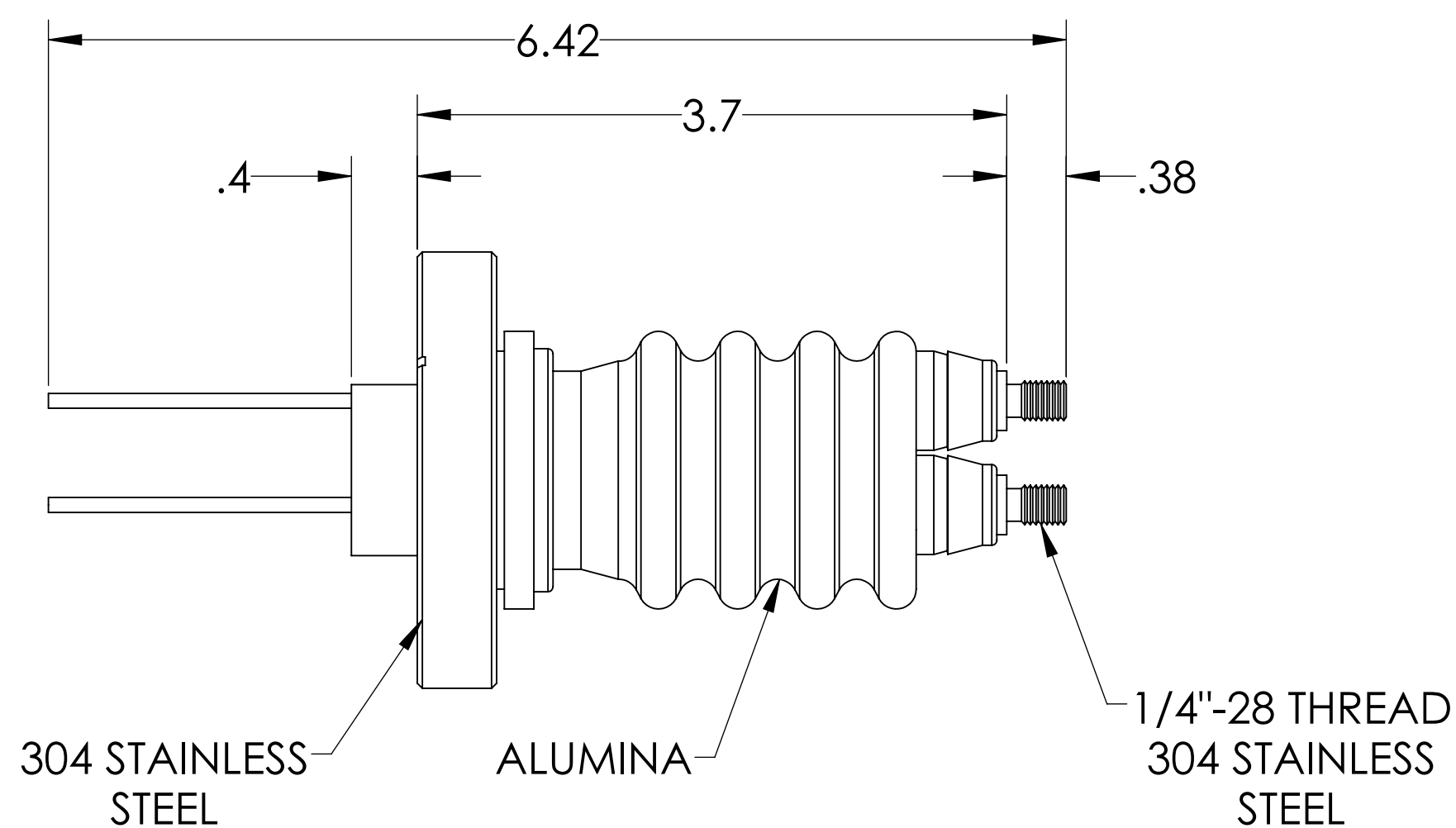
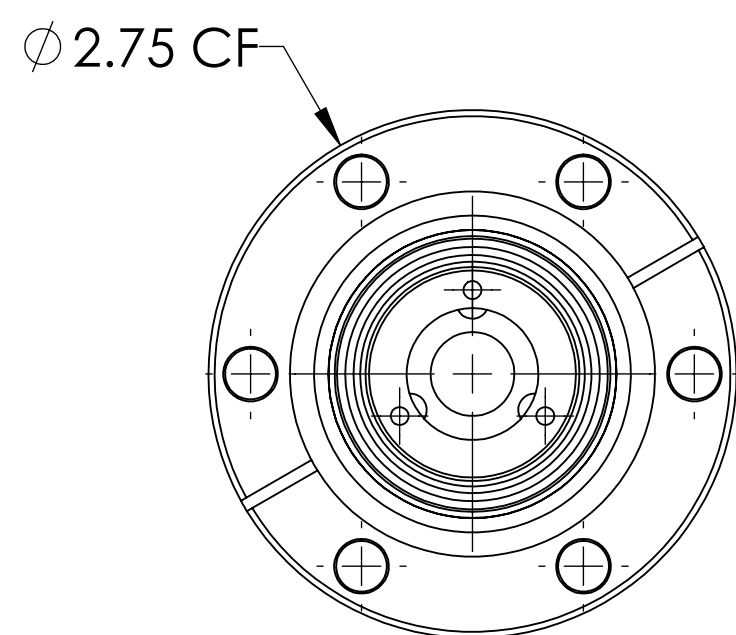
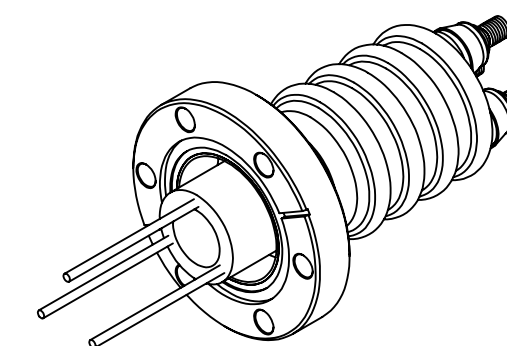


# MPF PRODUCTS INC.



**NOTE:**

1. VOLTAGE: 25,000 VOLTS DC PIN TO GROUND, 3KV PIN TO PIN
2. CURRENT: 50 AMPS
3. TEMPERATURE RATING: -100 TO 450°C

Power Feedthrough, 25 KV, 3 Pins, 0.094" Copper Conductor, 2.75" Conflat Flange, UHV Rated, Bakeable to 450°C

UNLESS OTHERWISE SPECIFIED:	QUOTATION #		N/A
DIMENSIONS ARE IN INCHES TOLERANCES:	NAME	DATE	MPF PRODUCTS INC.
ANGULAR: MACH ± 1/2°	DRAWN	9/11/2015	
TWO PLACE DECIMAL ± .030	CHECKED	9/11/2015	
THREE PLACE DECIMAL ± .015	ENG APPR.	9/11/2015	
MATERIAL	THIRD ANGLE:		POWER FEEDTHROUGH, 25 KV, 3 PINS, 2.75" CONFLAT FLANGE
	APPLICATION		
	NEXT ASSY	USED ON	
FINISH	SURFACE FINISH: 63 OR BETTER		DOWNLOADED FROM MPFPI.COM
PLATING	UNLESS OTHERWISE SPECIFIED:		DWG. NO. A6203-1-CF
	ALL DIAMETERS CONCENTRIC WITHIN .005. REMOVE ALL BURRS AND SHARP EDGES		REV.
	Tuesday, January 22, 2019 1:02:59 PM		