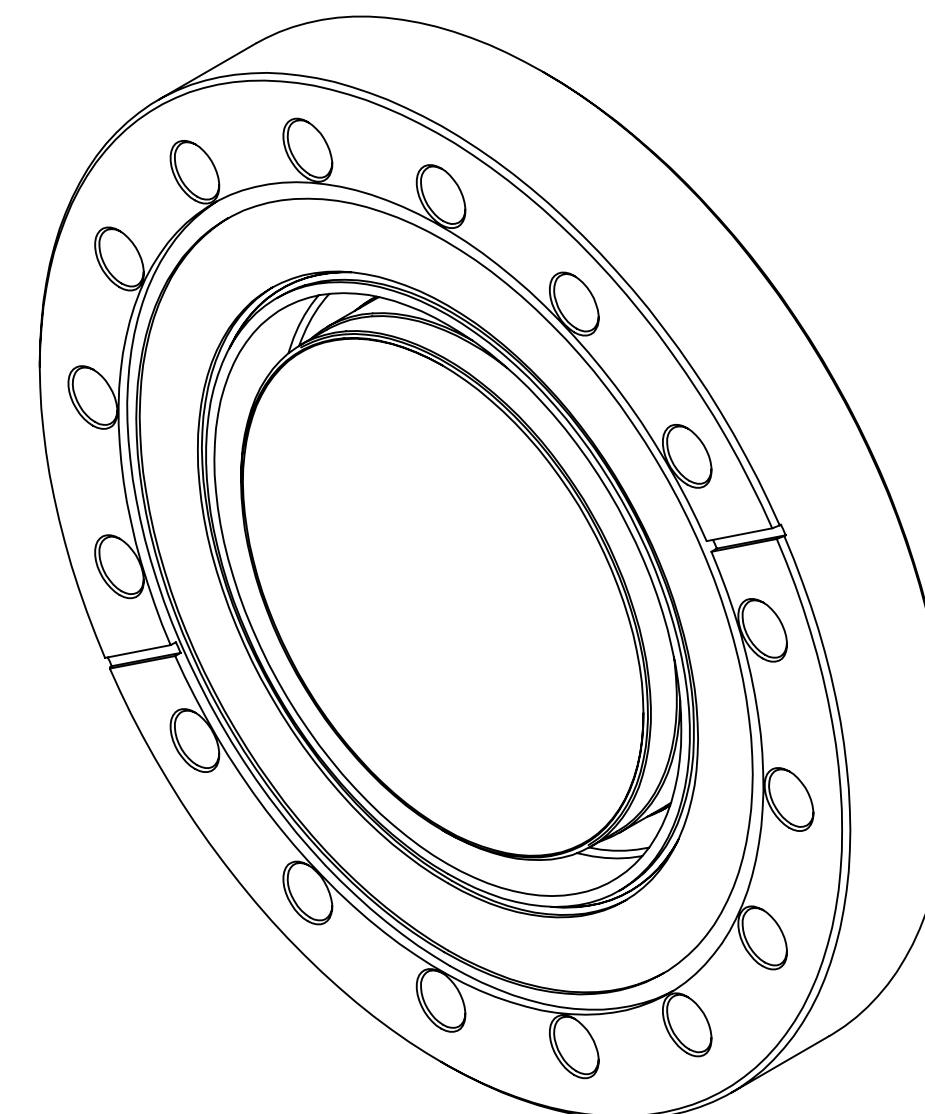
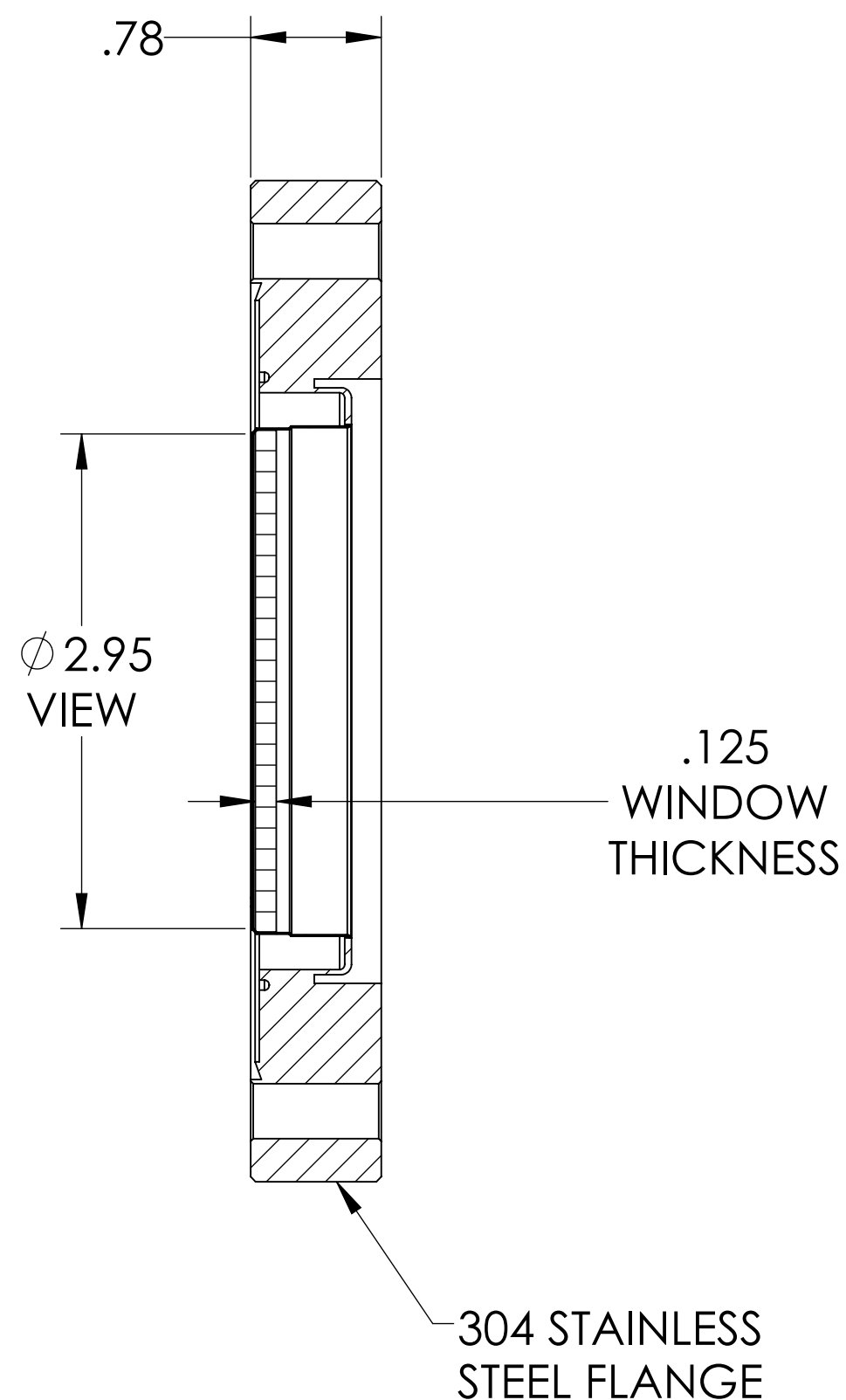
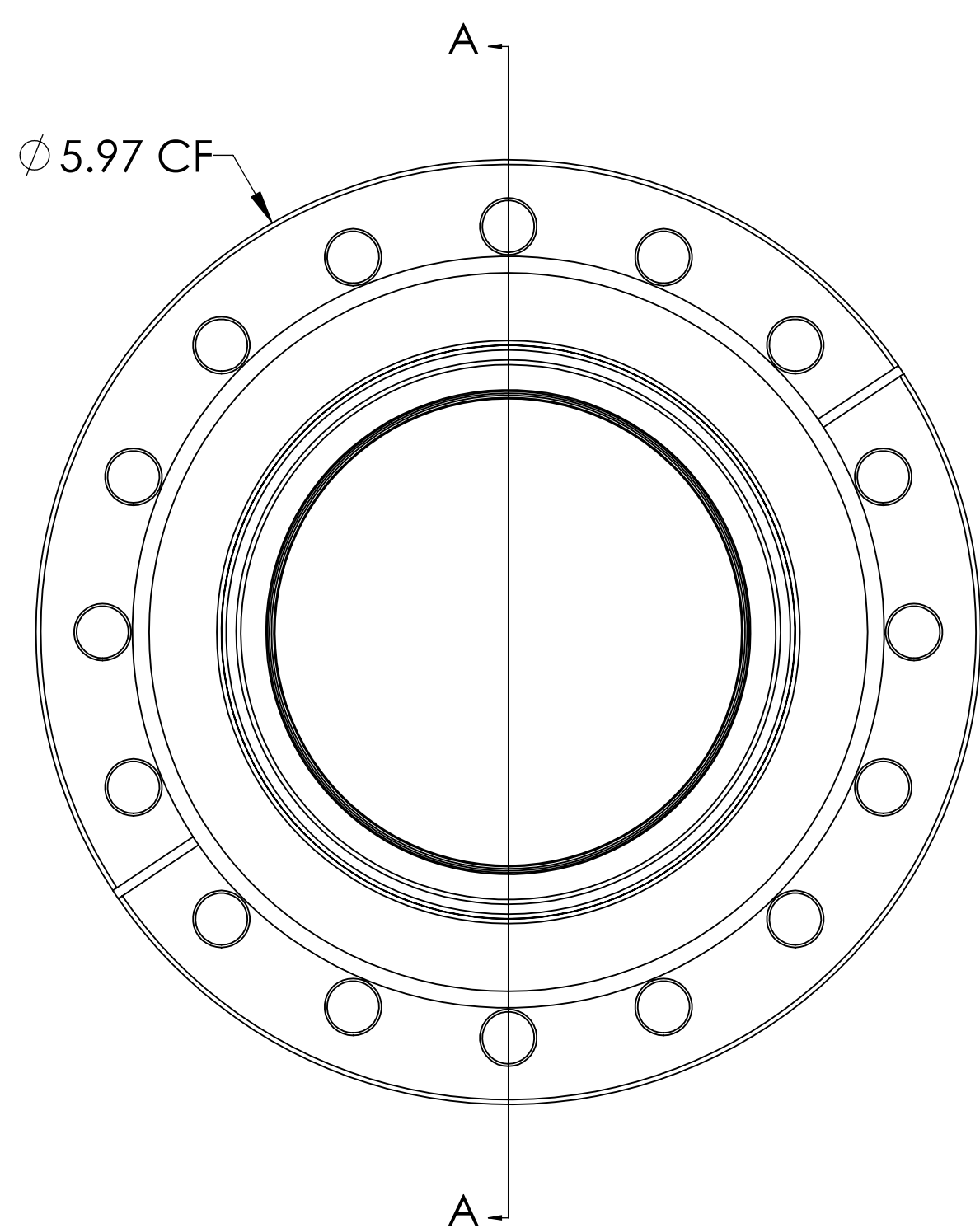


MPF PRODUCTS INC.



SPECIFICATIONS:

1. MATERIAL: SAPPHIRE
2. TWD <math>< 8\lambda @ 632\text{nm}</math> (PEAK TO VALLEY)
3. PARALLELISM <math>< 3</math> ARC MINUTES
4. SURFACE FINISH: 50/20 SCRATCH-DIG
5. THERMAL RANGE: -100 °C TO 450 °C
6. ORIENTATION: RANDOM
7. LEAK RATE <math>< 1 \times 10^{-9}</math> ATM CC/SEC HE

UV Grade Sapphire Viewport, 2.95" View Dia, 6" Conflat Flange

UNLESS OTHERWISE SPECIFIED:		QUOTATION #		N/A		
DIMENSIONS ARE IN INCHES		NAME	DATE	MPF PRODUCTS INC.		
TOLERANCES:		DRAWN	WJ			9/11/2015
ANGULAR: MACH $\pm 1/2^\circ$		CHECKED	WJ			9/11/2015
TWO PLACE DECIMAL $\pm .030$		ENG APPR.	WJ			9/11/2015
THREE PLACE DECIMAL $\pm .015$		THIRD ANGLE:		VIEWPORT, SAPPHIRE, UV, 3" VIEW, 600CF		
MATERIAL						
FINISH		APPLICATION				
PLATING		NEXT ASSY	USED ON	DOWNLOADED FROM MPFPI.COM		
SURFACE FINISH: $\sqrt{63}$ OR BETTER		UNLESS OTHERWISE SPECIFIED:		DWG. NO.	REV.	
ALL DIAMETERS CONCENTRIC WITHIN .005. REMOVE ALL BURRS AND SHARP EDGES		THURSDAY, JANUARY 24, 2019 11:37:17 AM		A6328-1-CF		