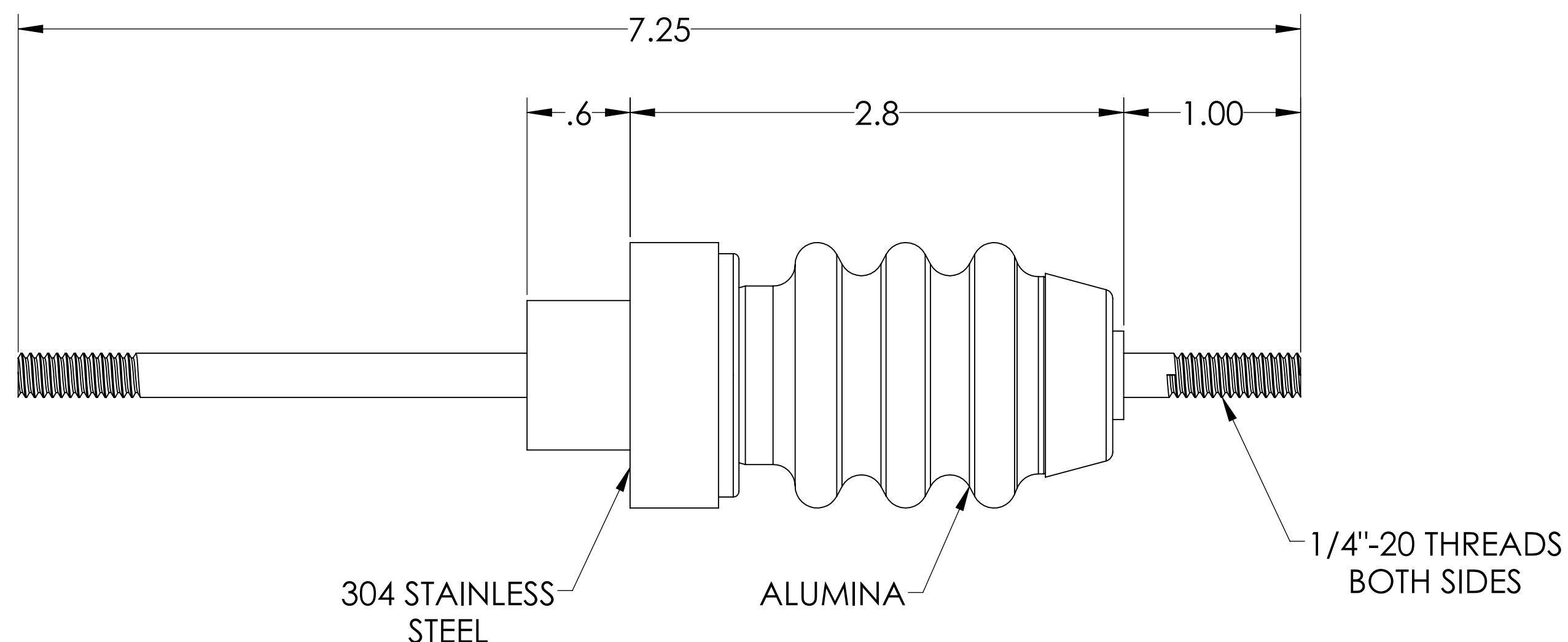
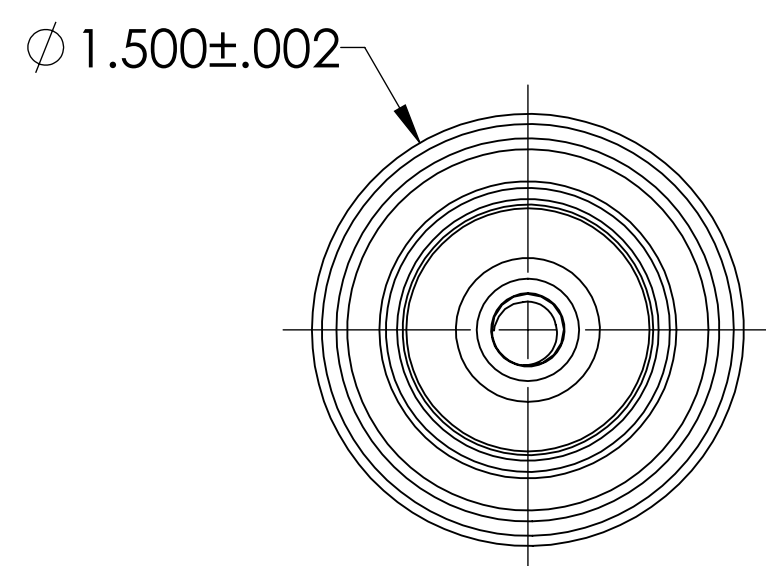
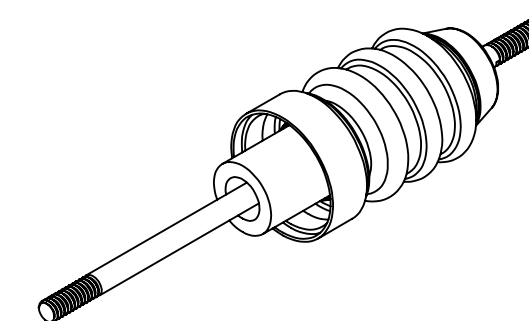


MPF PRODUCTS INC.



PART #	CONDUCTOR MATERIAL	CURRENT RATING
A7000-1-W	OFHC COPPER	180 AMPS
A7000-2-W	NICKEL 200	55 AMPS
A7000-3-W	304 STN. STL	7 AMPS

NOTE:

1. VOLTAGE: 20,000 VOLTS DC
2. CURRENT: SEE TABLE
3. TEMPERATURE RATING: -100 TO 450°C

Power Feedthrough, 20K V, 1 Pin, .250" Conductor, 1.500" Dia. Stainless Steel Weld Adapter, UHV Rated, Bakeable to 450°C

UNLESS OTHERWISE SPECIFIED:		QUOTATION #		N/A	
DIMENSIONS ARE IN INCHES TOLERANCES:		NAME	DATE	MPF PRODUCTS INC.	
ANGULAR: MACH ± 1/2°		DRAWN	9/11/2015		
TWO PLACE DECIMAL ± .030		CHECKED	9/11/2015		
THREE PLACE DECIMAL ± .015		ENG APPR.	9/11/2015		
MATERIAL		THIRD ANGLE:		POWER FEEDTHROUGH, 20 KV, 1 PIN, 1.500" WELD ADAPTER	
FINISH		APPLICATION			
PLATING		NEXT ASSY	USED ON		
		SURFACE FINISH: 63 OR BETTER			
		UNLESS OTHERWISE SPECIFIED:		DOWNLOADED FROM MPFPI.COM	
		ALL DIAMETERS CONCENTRIC WITHIN .005. REMOVE ALL BURRS AND SHARP EDGES		DWG. NO. A7000	
				REV	
				Wednesday, December 12, 2018 8:14:50 AM	