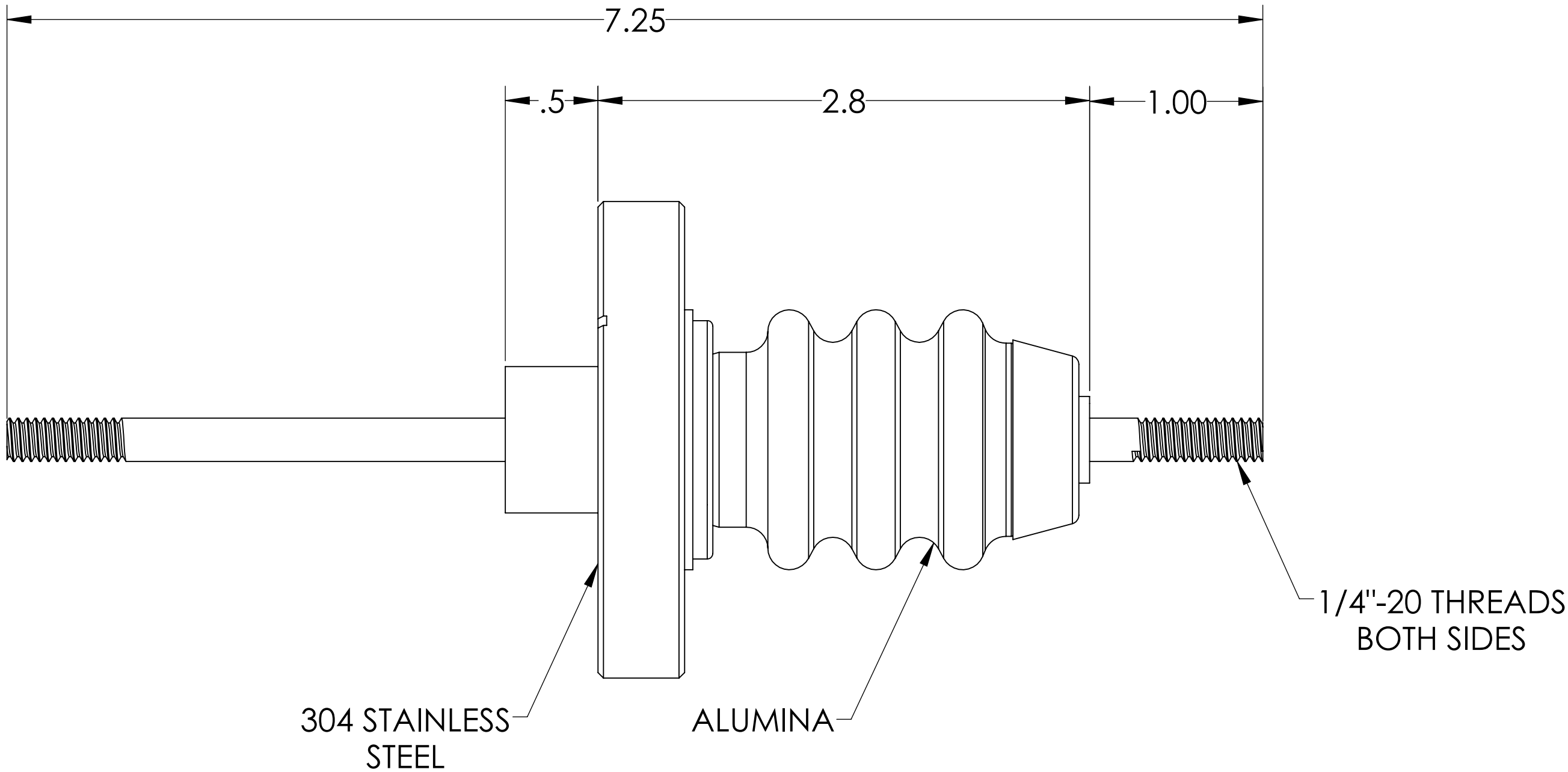
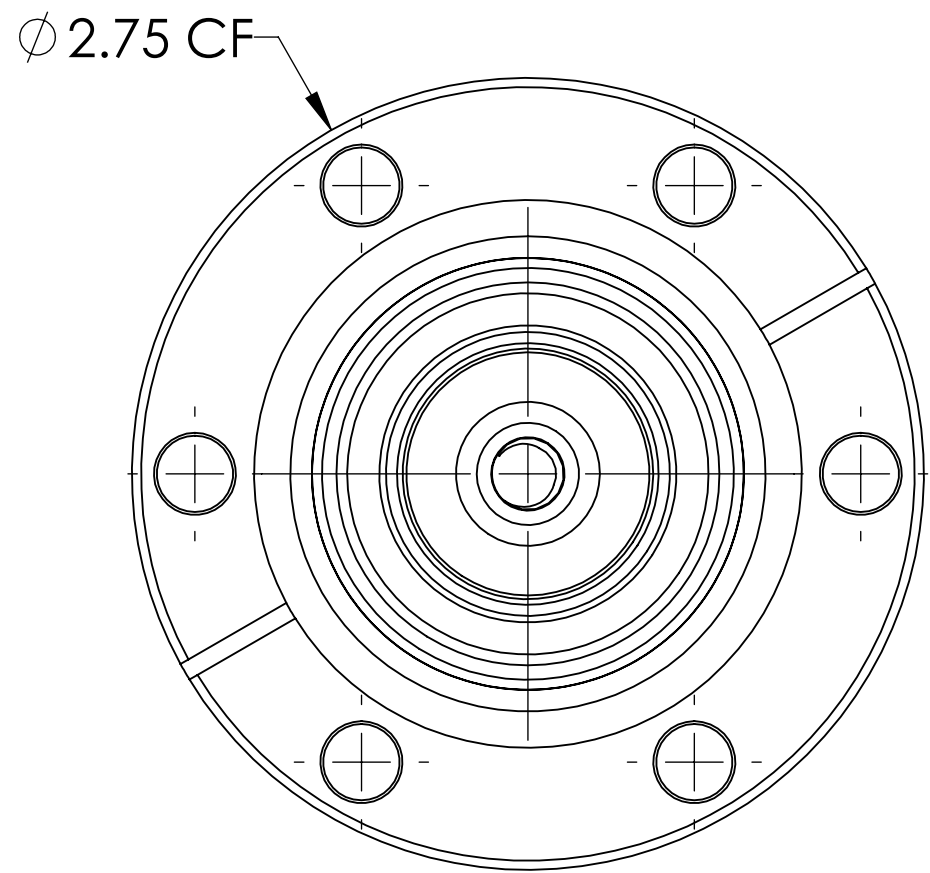
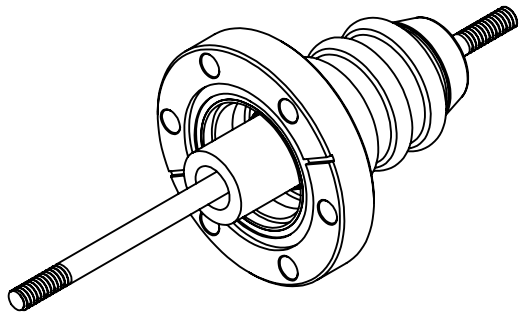


MPF PRODUCTS INC.



PART #	CONDUCTOR MATERIAL	CURRENT RATING
A7001-1-CF	OFHC COPPER	180 AMPS
A7001-2-CF	NICKEL 200	55 AMPS
A7001-3-CF	304 STN. STL	7 AMPS

- NOTE:
- 1. VOLTAGE: 20,000 VOLTS DC
 - 2. CURRENT: SEE TABLE
 - 3. TEMPERATURE RATING: -100 TO 450°C

Power Feedthrough, 20K V, 1 Pin, .250" Conductor, 2.75" Conflat Flange, UHV Rated, Bakeable to 450°C

UNLESS OTHERWISE SPECIFIED:		QUOTATION #		N/A		
DIMENSIONS ARE IN INCHES TOLERANCES: ANGULAR: MACH ± 1/2° TWO PLACE DECIMAL ± .030 THREE PLACE DECIMAL ± .015 MATERIAL FINISH PLATING		DRAWN	NAME	DATE	MPF PRODUCTS INC. TITLE: POWER FEEDTHROUGH, 20 KV, 1 PIN, 2.75" CONFLAT FLANGE DOWNLOADED FROM MPFPI.COM DWG. NO. A7001 REV	
		CHECKED	WJ	9/11/2015		
		ENG APPR.	WJ	9/11/2015		
		THIRD ANGLE: 				
SURFACE FINISH: 63/ OR BETTER		APPLICATION		NEXT ASSY		USED ON
UNLESS OTHERWISE SPECIFIED:		ALL DIAMETERS CONCENTRIC WITHIN .005. REMOVE ALL BURRS AND SHARP EDGES				
		Wednesday, April 10, 2019 9:13:03 AM				