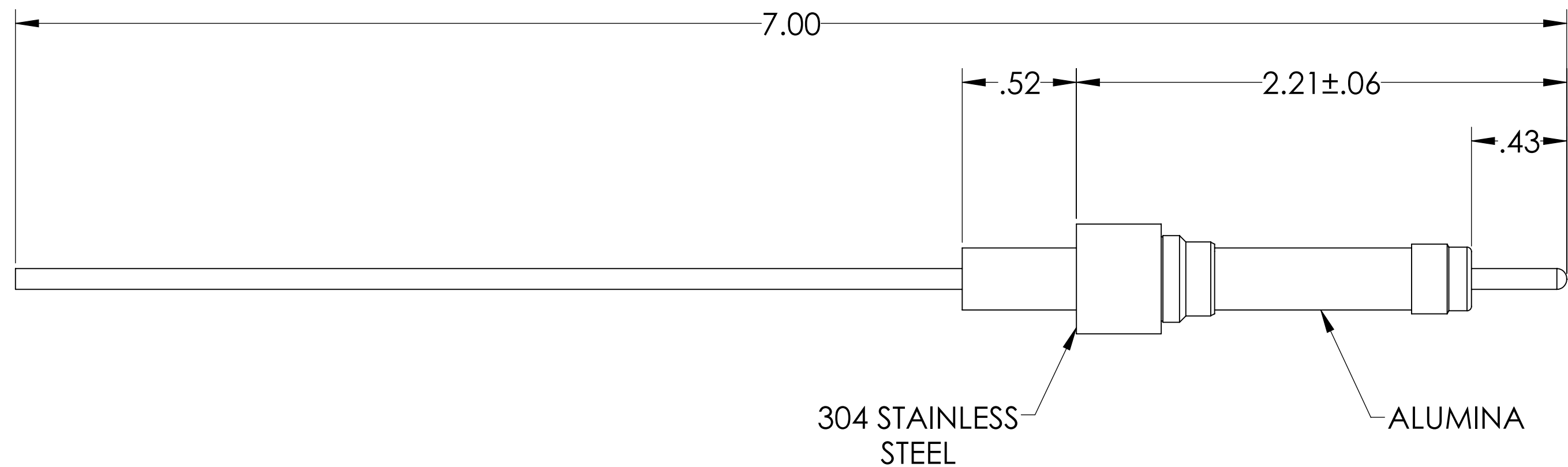
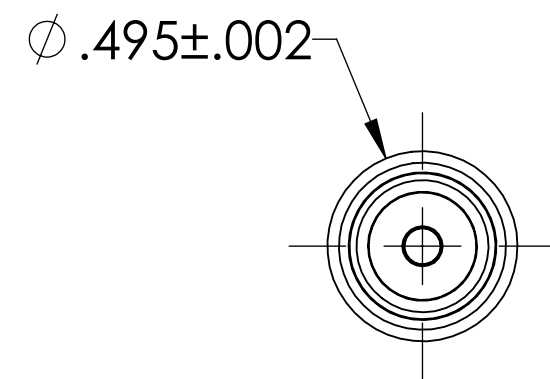
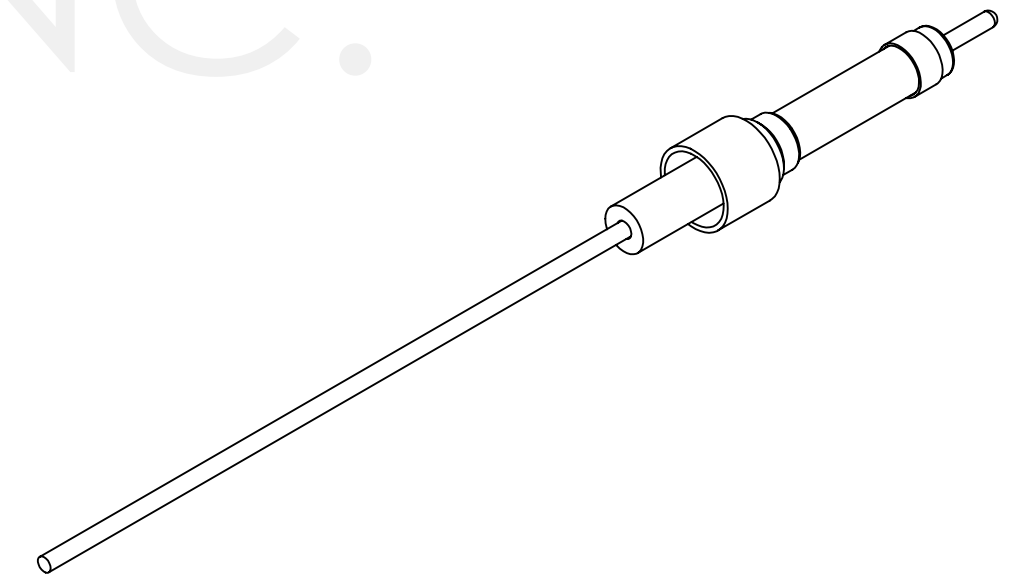


# MPF PRODUCTS INC.



| PART #    | CONDUCTOR MATERIAL | "A" DIM | CURRENT RATING |
|-----------|--------------------|---------|----------------|
| A7501-1-W | OFHC COPPER        | 0.094   | 30 AMPS        |
| A7501-2-W | NICKEL 200         | 0.092   | 15 AMPS        |
| A7501-3-W | 304 STN STL        | 0.094   | 1 AMP          |

- NOTE:
1. VOLTAGE: 20,000 VOLTS DC
  2. CURRENT: SEE TABLE
  3. TEMPERATURE RATING: -100 TO 450°C

Power Feedthrough W/ Power Glove, 20 KV, 1 Pins, 0.495" Dia. Stainless Steel Weld Adapter, UHV Rated, Bakeable to 450°C

|   |   |               |
|---|---|---------------|
| UNLESS OTHERWISE SPECIFIED:             | QUOTATION #   | N/A           |
| DIMENSIONS ARE IN INCHES<br>TOLERANCES: | NAME  | DATE          |
| ANGULAR: MACH ± 1/2°                    | WJ  | 9/11/2015     |
| TWO PLACE DECIMAL ± .030                | CHECKED   | 9/11/2015     |
| THREE PLACE DECIMAL ± .015              | ENG APPR.   | WJ 9/11/2015  |
| MATERIAL                                | THIRD ANGLE:  |               |
| FINISH                                  | APPLICATION   |               |
| PLATING                                 | NEXT ASSY USED ON   |               |
|   | SURFACE FINISH:   | 63/ OR BETTER |
|   | UNLESS OTHERWISE SPECIFIED:   |               |
|   | ALL DIAMETERS CONCENTRIC WITHIN .005.<br>REMOVE ALL BURRS AND SHARP EDGES |               |
|   | TITLE:<br>POWER GLOVE,<br>20 KV, 1 PINS, 0.495"<br>WELD ADAPTER           |               |
|   | DWG. NO. A7501  |               |
|   | REV   |               |
|   | Wednesday, December 12, 2018 9:15:28 AM                                   |               |