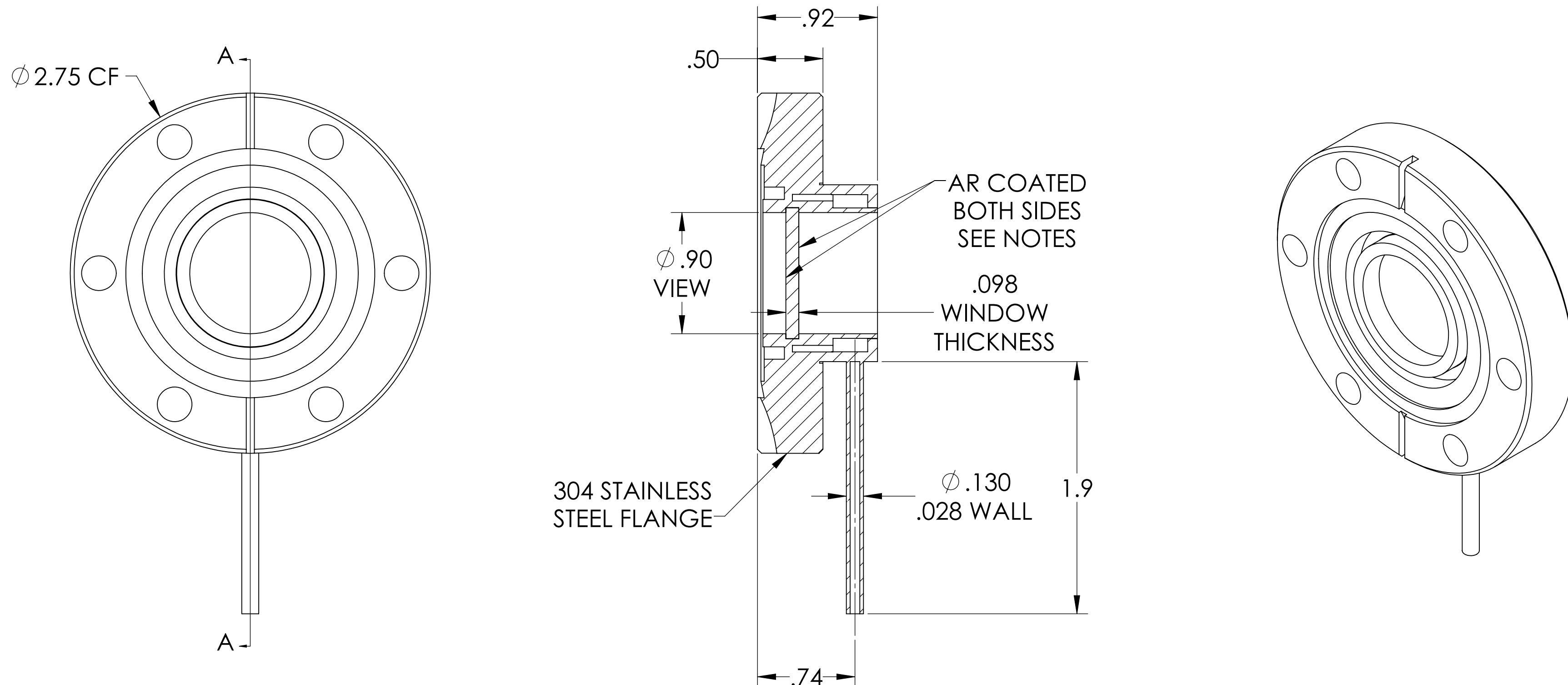


MPF PRODUCTS INC.



SPECIFICATIONS:

1. MATERIAL: ZINC SULFIDE (CLEARTRAN)
2. TWD < $\lambda/4$ @ 632NM (PEAK TO VALLEY)
3. PARALLELISM < 3 ARC MINUTES
4. SURFACE FINISH: 40/20 SCRATCH-DIG
5. BBAR COATED BOTH SIDES 8-12 MICRONS
6. THERMAL RANGE: -100 °C TO 200 °C
7. LEAK RATE < 8 X 10⁻¹⁰ ATM/CC SEC HE

Cleartran (ZnS) Viewport w/ AR Coating for 8-12 microns, Differentially Pumped, 0.90" View Dia, 2.75" Conflat Flange, Weld Tube Fitting

UNLESS OTHERWISE SPECIFIED:	QUOTATION #	N/A	
DIMENSIONS ARE IN INCHES TOLERANCES:	DRAWN	NAME	DATE
ANGULAR: MACH ± 1/2°	WJ	WJ	9/11/2015
TWO PLACE DECIMAL ± .030	CHECKED		9/11/2015
THREE PLACE DECIMAL ± .015	ENG APPR.	WJ	9/11/2015
MATERIAL	THIRD ANGLE:	MPF PRODUCTS INC.	
	APPLICATION	TITLE:	
	NEXT ASSY	VIEWPORT, ZNS, DIFF PUMPED, AR 8-12 MICRON, 1" VIEW, 275CF MOUNT, WELD TUBE FITTING	
	USED ON	DOWNLOADED FROM MPFPI.COM	
FINISH	SURFACE FINISH:	DWG. NO.	REV
PLATING	UNLESS OTHERWISE SPECIFIED:	A7845-4-CF	
	ALL DIAMETERS CONCENTRIC WITHIN .005. REMOVE ALL BURRS AND SHARP EDGES	Thursday, January 24, 2019 1:00:20 PM	