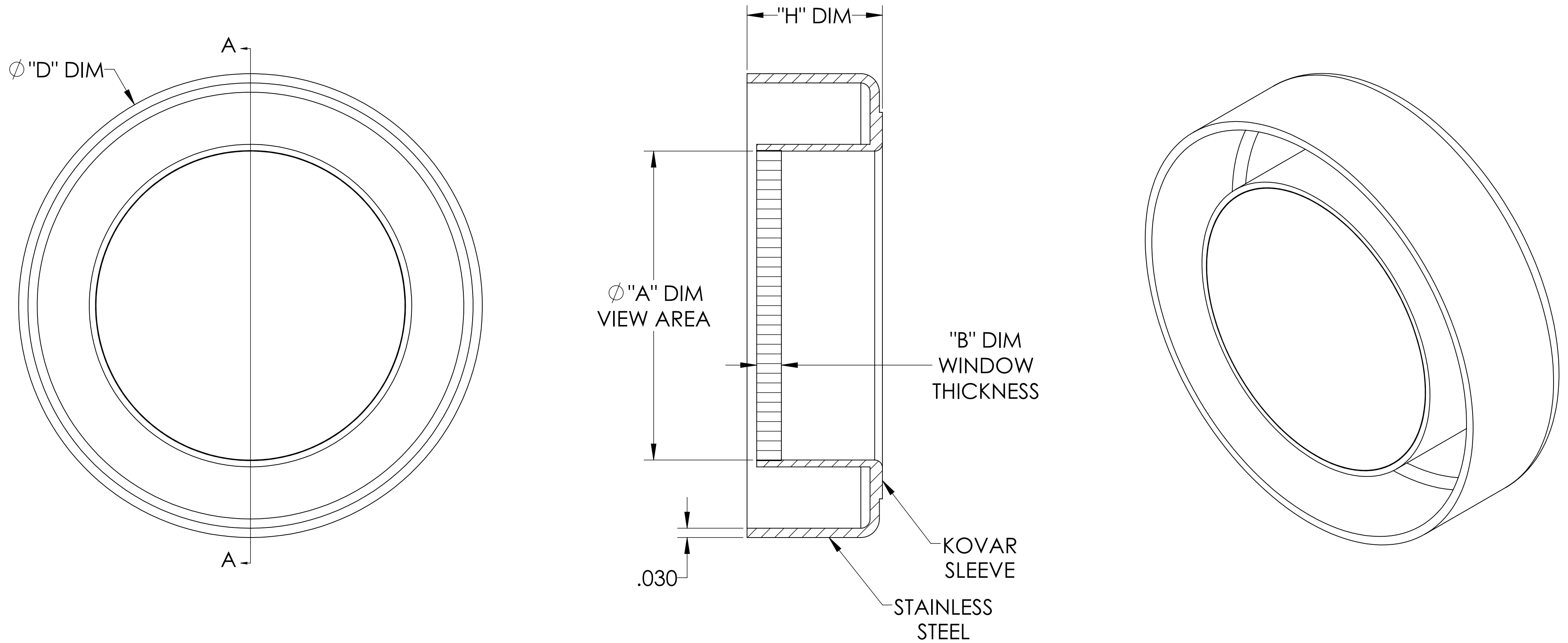


MPF PRODUCTS INC.



PART #	Ø "A" VIEW AREA	"B"	Ø "D" ± .002	"H"
A8006-2-W	.94	.080	1.500	.44
A8006-3-W	1.44	.080	2.500	.49
A8006-4-W	1.94	.094	2.500	.54

SPECIFICATIONS:

1. MATERIAL: SAPPHIRE
2. TWD < $\lambda/2$ @ 632nm (PEAK TO VALLEY)
3. PARALLELISM < 3 ARC-MINUTES
4. SURFACE FINISH: 20-10 SCRATCH-DIG
5. THERMAL RANGE: -100 °C TO 450 °C
6. ORIENTATION: 0°
7. LEAK RATE < 1 X 10⁻⁹ ATM CC/SEC HE

Laser Grade Sapphire Viewport, .69", .94", 1.44", 1.94" View Dia, 1.50", 2.50" Dia Stainless Steel Weld Adapter

UNLESS OTHERWISE SPECIFIED:	QUOTATION #	N/A	
DIMENSIONS ARE IN INCHES TOLERANCES:	DRAWN	NAME	DATE
ANGULAR: MACH ± 1/2°	WJ	WJ	9/11/2015
TWO PLACE DECIMAL ± .030	CHECKED		9/11/2015
THREE PLACE DECIMAL ± .015	ENG APPR.	WJ	9/11/2015
MATERIAL	THIRD ANGLE:		
FINISH	APPLICATION	NEXT ASSY USED ON	
PLATING	SURFACE FINISH:	63 OR BETTER	
	UNLESS OTHERWISE SPECIFIED:	ALL DIAMETERS CONCENTRIC WITHIN .005. REMOVE ALL BURRS AND SHARP EDGES	
	TITLE:	VIEWPORT, SAPPHIRE, LASER GRADE, WELD ADAPTER	
	DOWNLOADED FROM MPFPI.COM	DWG. NO. REV	
		A8006	
		Friday, January 25, 2019 5:55:39 AM	