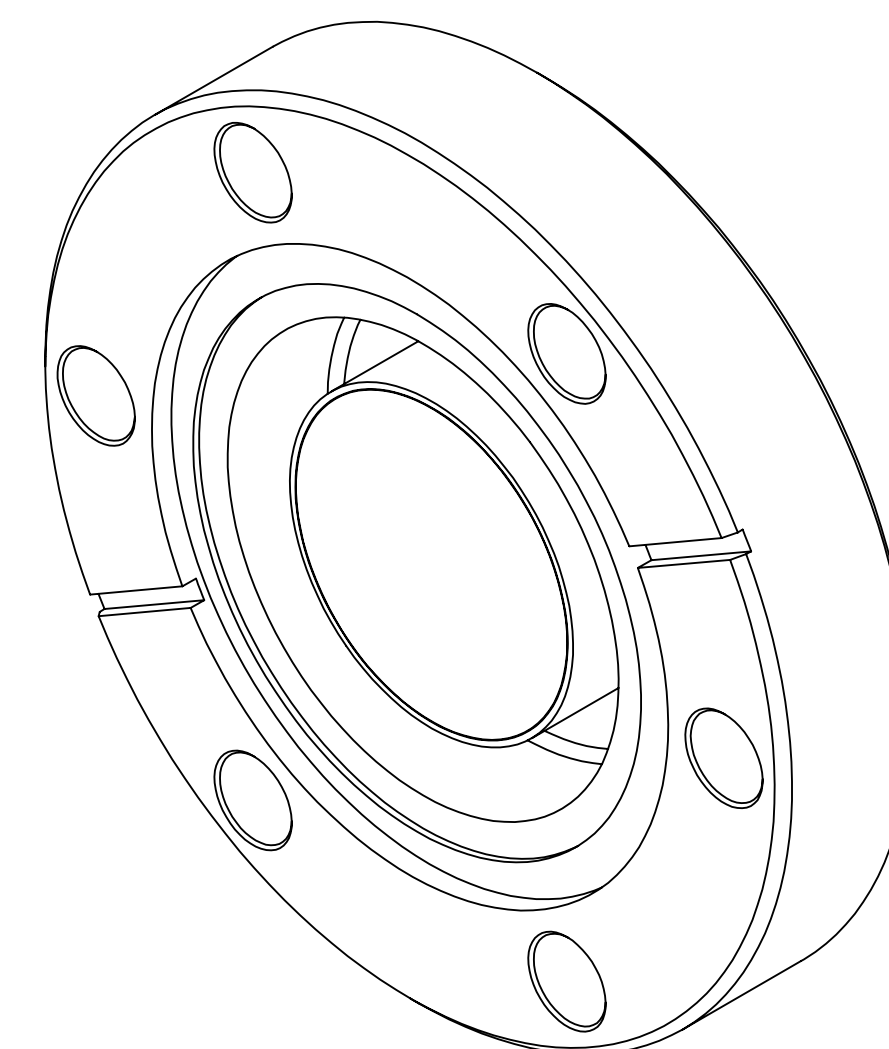
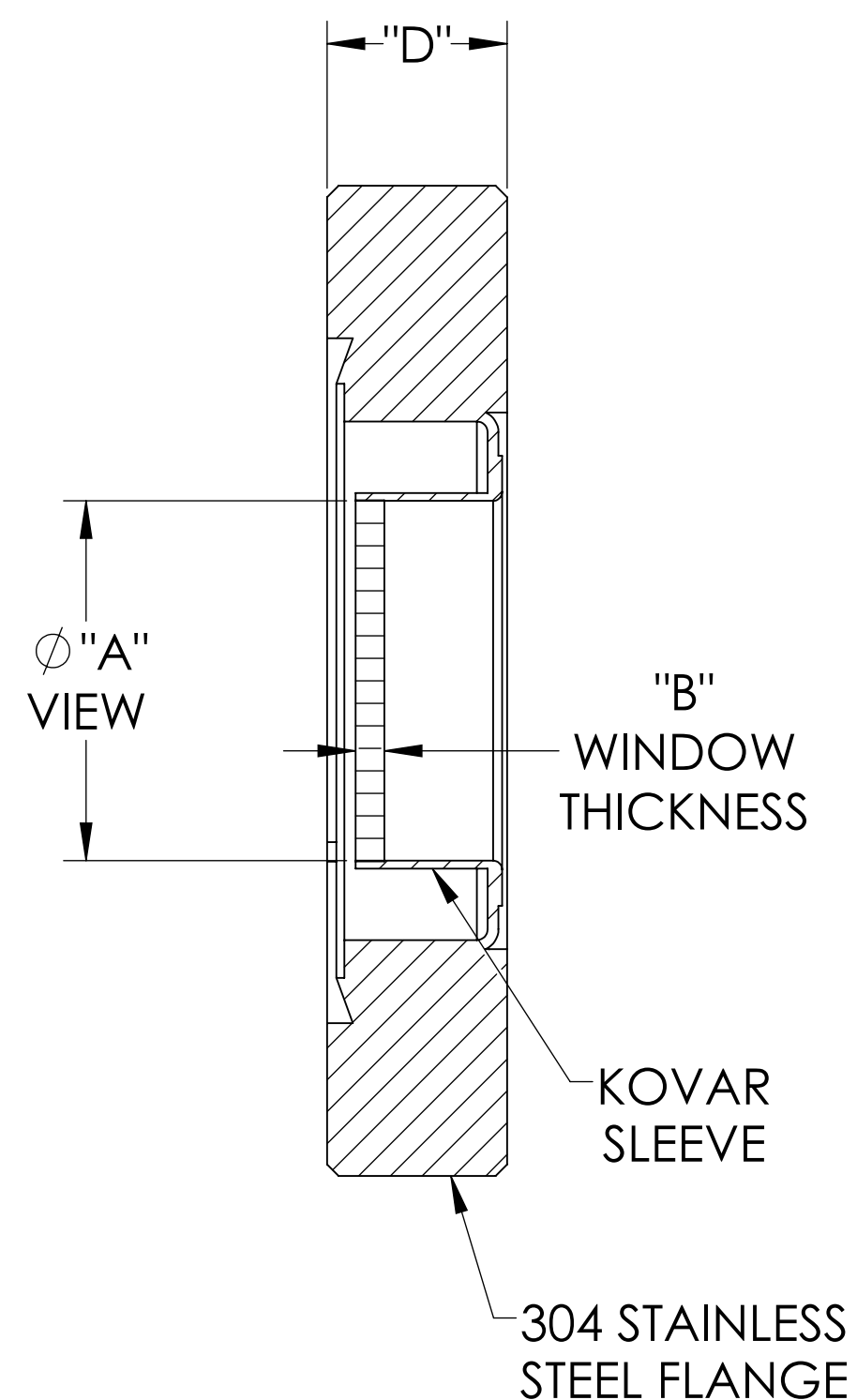
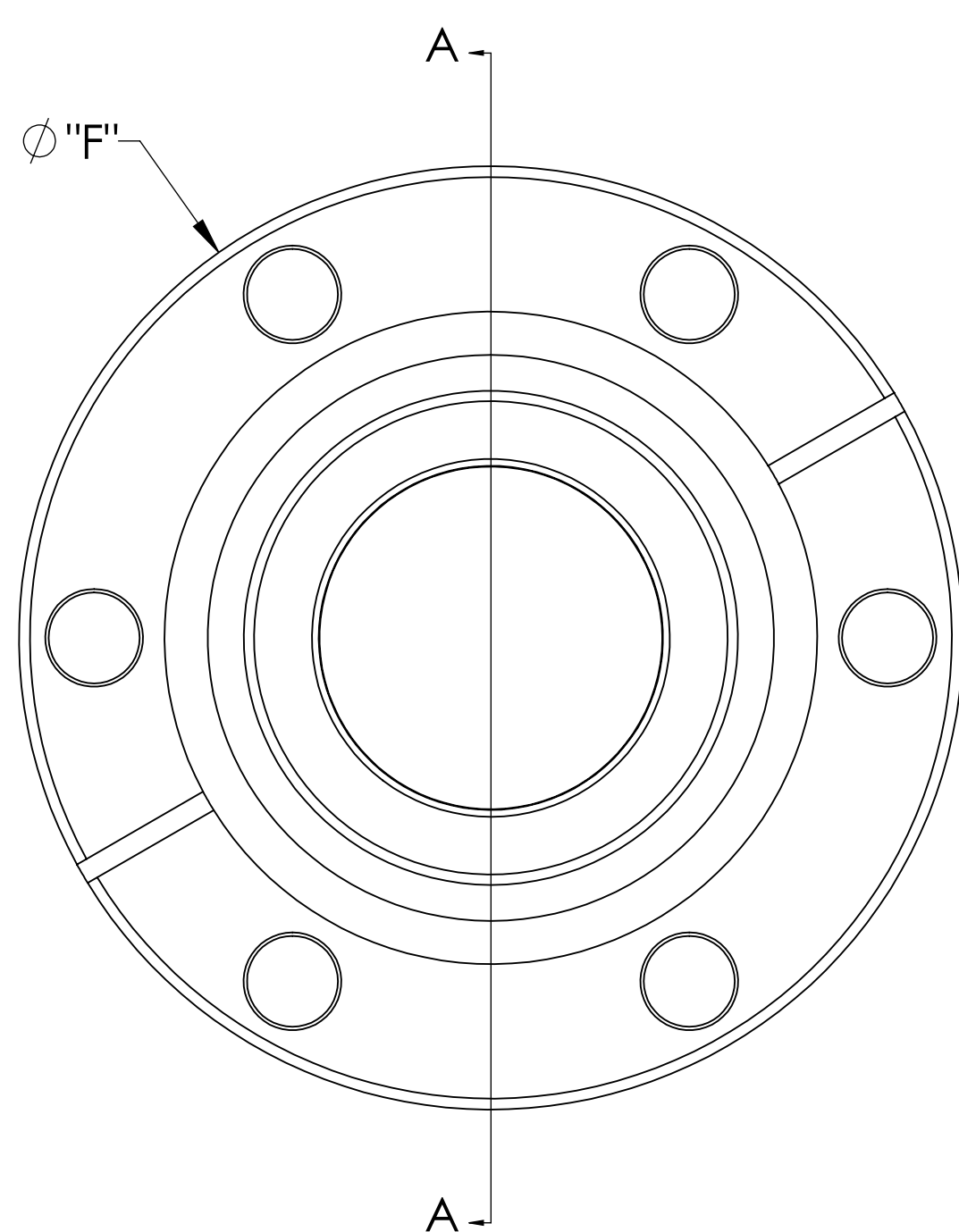


MPF PRODUCTS INC.



PART #	∅ "A" VIEW AREA	"B"	∅ "D" ± .002	"H"
A8007-2-CF	.94	.080	1.500	.44
A8007-3-CF	1.44	.080	2.500	.49
A8007-4-CF	1.94	.094	2.500	.54

SPECIFICATIONS:

1. MATERIAL: SAPPHIRE
2. TWD < λ/2 @ 632nm (PEAK TO VALLEY)
3. PARALLELISM < 3 ARC-MINUTES
4. SURFACE FINISH: 20-10 SCRATCH-DIG
5. THERMAL RANGE: -100 °C TO 450 °C
6. ORIENTATION: 0°
7. LEAK RATE < 1 X 10⁻⁹ ATM CC/SEC HE

Laser Grade Sapphire Viewport, 0.69", .094", 1.44", 1.94" View Dia, 2.75", 4.50" Conflat Flange

UNLESS OTHERWISE SPECIFIED:		QUOTATION #		N/A	
DIMENSIONS ARE IN INCHES TOLERANCES:		NAME	DATE	MPF PRODUCTS INC.	
ANGULAR: MACH ± 1/2°		DRAWN	9/11/2015		
TWO PLACE DECIMAL ± .030		CHECKED	9/11/2015		
THREE PLACE DECIMAL ± .015		ENG APPR.	9/11/2015		
MATERIAL		THIRD ANGLE:		VIEWPORT, SAPPHIRE, LASER GRADE, CF FLANGE	
FINISH		APPLICATION			
PLATING		NEXT ASSY USED ON			
SURFACE FINISH: √63 OR BETTER		UNLESS OTHERWISE SPECIFIED:		DOWNLOADED FROM MPFPI.COM	
ALL DIAMETERS CONCENTRIC WITHIN .005. REMOVE ALL BURRS AND SHARP EDGES		DWG. NO.		REV	
		A8007		Monday, January 28, 2019 10:15:40 AM	