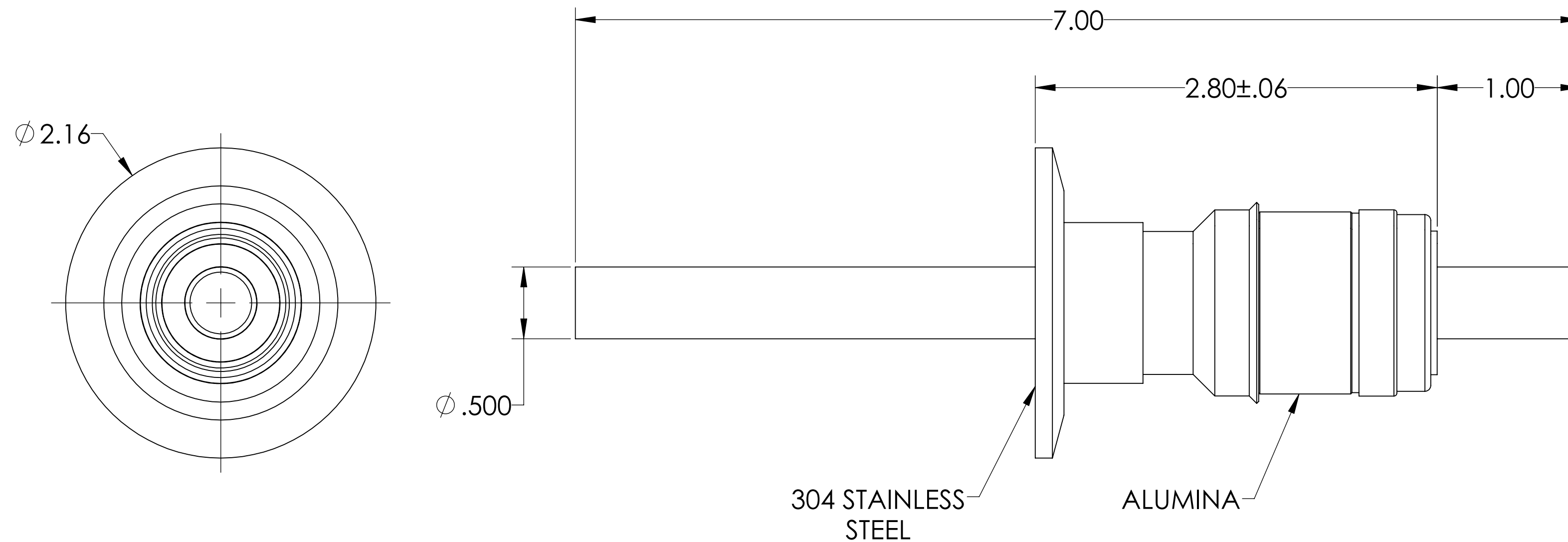
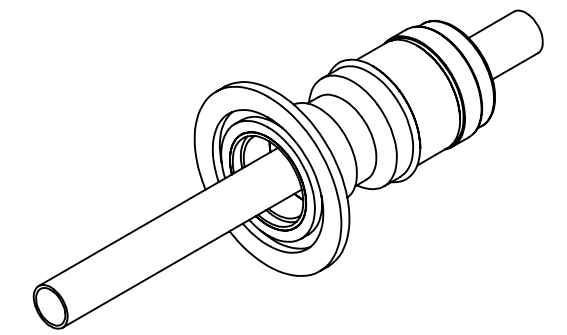


MPF PRODUCTS INC.



PART #	CONDUCTOR TYPE	CONDUCTOR MATERIAL	CURRENT RATING
A8207-1-QF	TUBE (.032 WALL)	304 STN STL	N/A
A8207-2-QF	TUBE (.032 WALL)	OFHC COPPER	N/A
A8207-3-QF	ROD	304 STN STL	30 AMPS
A8207-4-QF	ROD	NICKEL 200	140 AMPS
A8207-5-QF	ROD	OFHC COPPER	450 AMPS

NOTE:

- VOLTAGE: 8000 VOLTS DC
- CURRENT: SEE TABLE
- TEMPERATURE RATING: -100 TO 450°C

Power Feedthrough, 8000 Volts, 1 Pin, 0.500" Conductor, 2.16" QF/KF, UHV Rated, Bakeable to 450°C

UNLESS OTHERWISE SPECIFIED:		QUOTATION #	
DIMENSIONS ARE IN INCHES TOLERANCES:		N/A	
ANGULAR: MACH ± 1/2° TWO PLACE DECIMAL ± .030 THREE PLACE DECIMAL ± .015		NAME	DATE
MATERIAL		DRAWN	WJ
FINISH		CHECKED	9/11/2015
PLATING		ENG APPR.	WJ
		THIRD ANGLE:	
		APPLICATION	
		NEXT ASSY	USED ON
		SURFACE FINISH:	63/ OR BETTER
		UNLESS OTHERWISE SPECIFIED:	
		ALL DIAMETERS CONCENTRIC WITHIN .005. REMOVE ALL BURRS AND SHARP EDGES	
		MPF PRODUCTS INC.	
		TITLE:	
		POWER FEEDTHROUGH, 8000 VOLTS, 1 PIN, 2.16" QF/KF	
		DOWNLOADED FROM MPFPI.COM	
		DWG. NO.	REV
		A8207	
		Wednesday, June 12, 2019 8:05:32 AM	