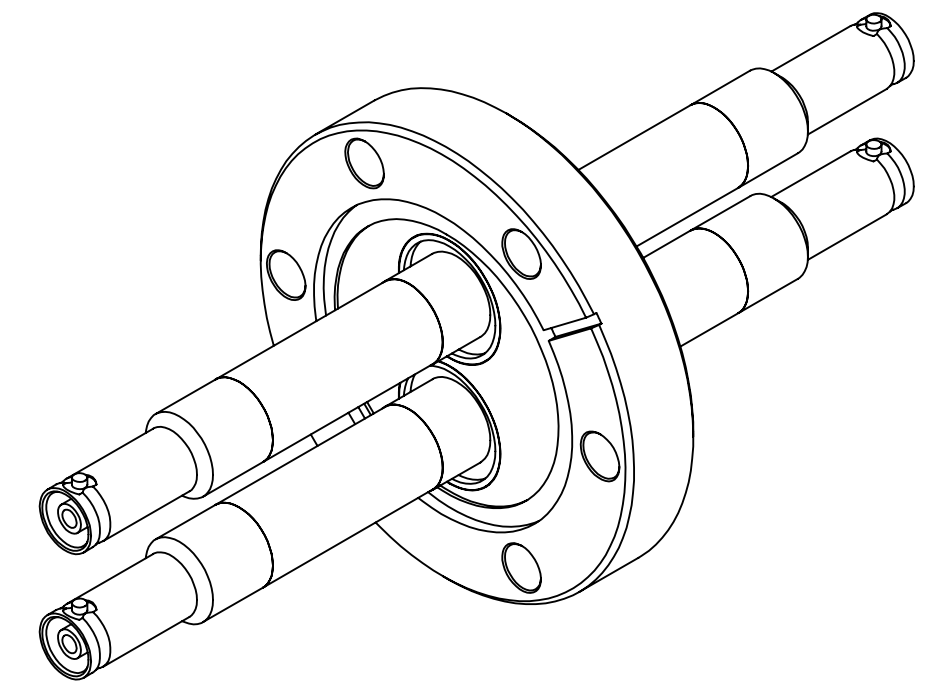
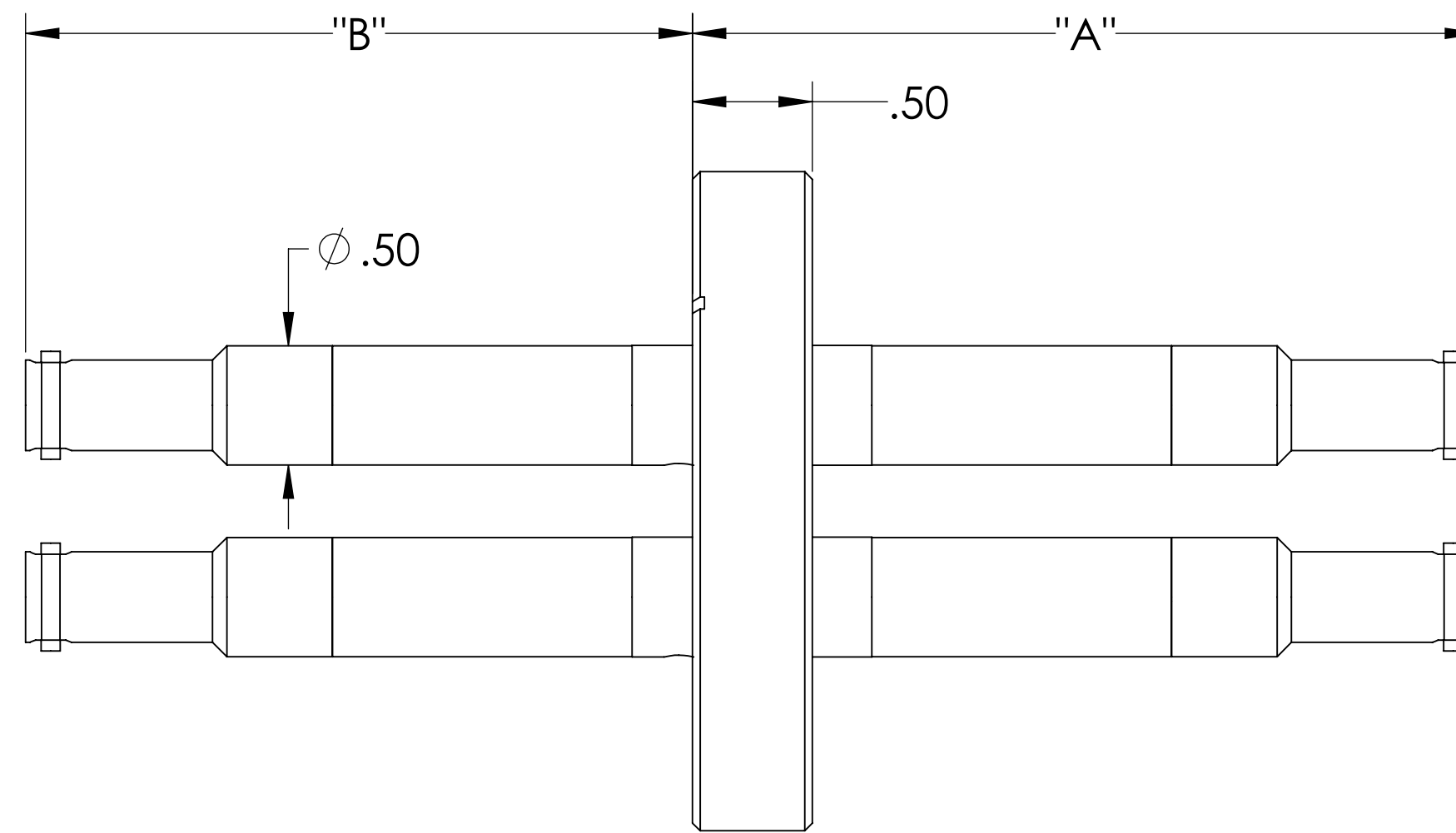
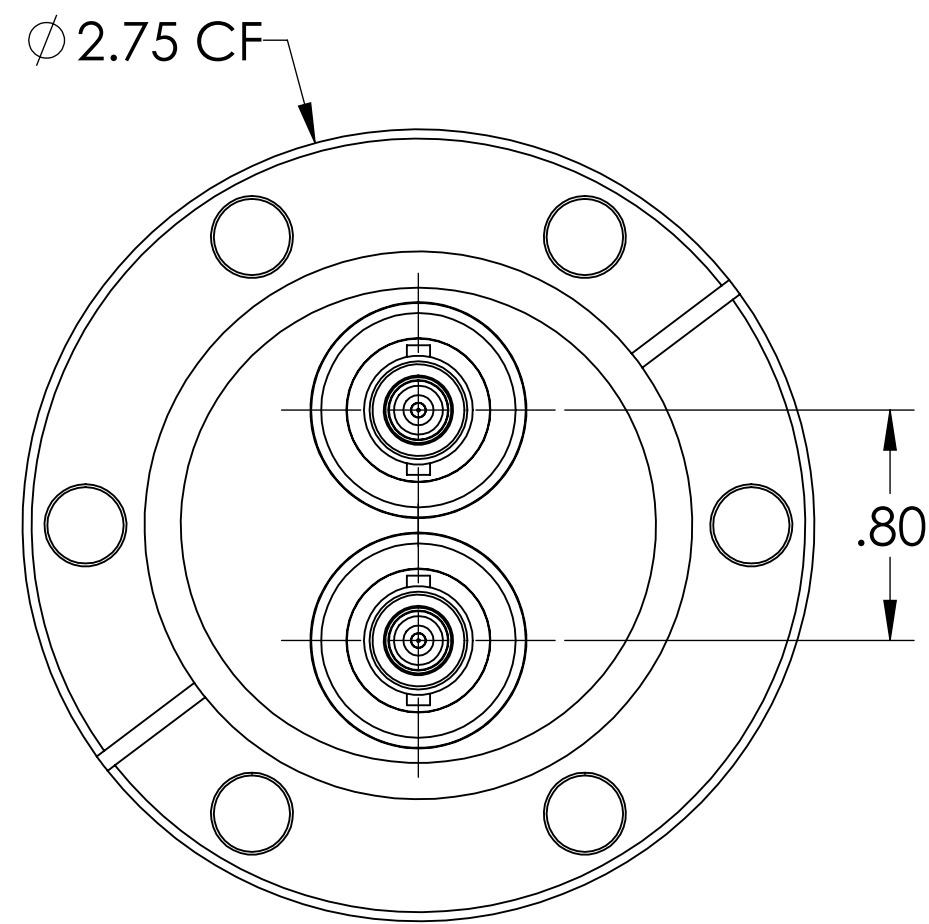
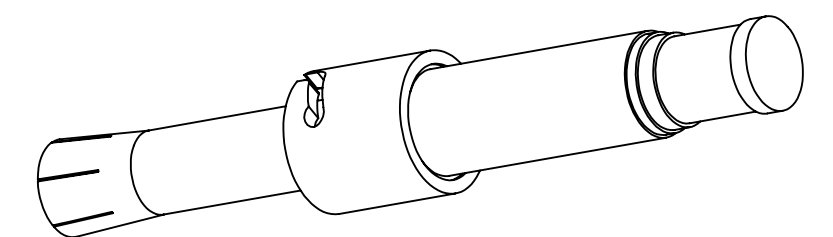


MPF PRODUCTS INC.



PART #	"A"	"B"	Ø "C"	AIRSIDE CONNECTOR INCLUDED
A8272-1-CF	3.7	2.3	1.33	YES
A8272-2-CF	3.3	2.8	2.75	YES
A8272-3-CF	3.3	2.8	2.75	YES



NOTE:

1. SHIELD: GROUNDED
2. VOLTAGE: 10,000 VOLTS DC
3. CURRENT: 5 AMP
4. TEMPERATURE RATING: -200 TO 450°C (FEEDTHROUGH), 65 TO 165°C (AIRSIDE CONNECTOR)
5. IMPEDANCE: NON-CONSTANT

SHV-10 Coaxial Feedthrough, 1 Pin, Grounded Shield, Double Ended, Conflat Flange, UHV Compatible

UNLESS OTHERWISE SPECIFIED:		QUOTATION #		N/A	
DIMENSIONS ARE IN INCHES TOLERANCES:		NAME	DATE	MPF PRODUCTS INC.	
ANGULAR: MACH ± 1/2°		DRAWN	9/11/2015		
TWO PLACE DECIMAL ± .030		CHECKED	9/11/2015		
THREE PLACE DECIMAL ± .015		ENG APPR.	9/11/2015		
MATERIAL		THIRD ANGLE:		TITLE: SHV-10 COAXIAL FEEDTHROUGH, 1 PIN, GROUNDED SHIELD, DOUBLE ENDED, CONFLAT FLANGE DOWNLOADED FROM MPFPI.COM	
FINISH		APPLICATION			
PLATING		NEXT ASSY	USED ON		
SURFACE FINISH:		SURFACE FINISH: 63/ OR BETTER			
UNLESS OTHERWISE SPECIFIED:		UNLESS OTHERWISE SPECIFIED:		DWG. NO. A8272	
ALL DIAMETERS CONCENTRIC WITHIN .005. REMOVE ALL BURRS AND SHARP EDGES		ALL DIAMETERS CONCENTRIC WITHIN .005. REMOVE ALL BURRS AND SHARP EDGES		REV	
		Wednesday, October 10, 2018 8:31:21 AM			