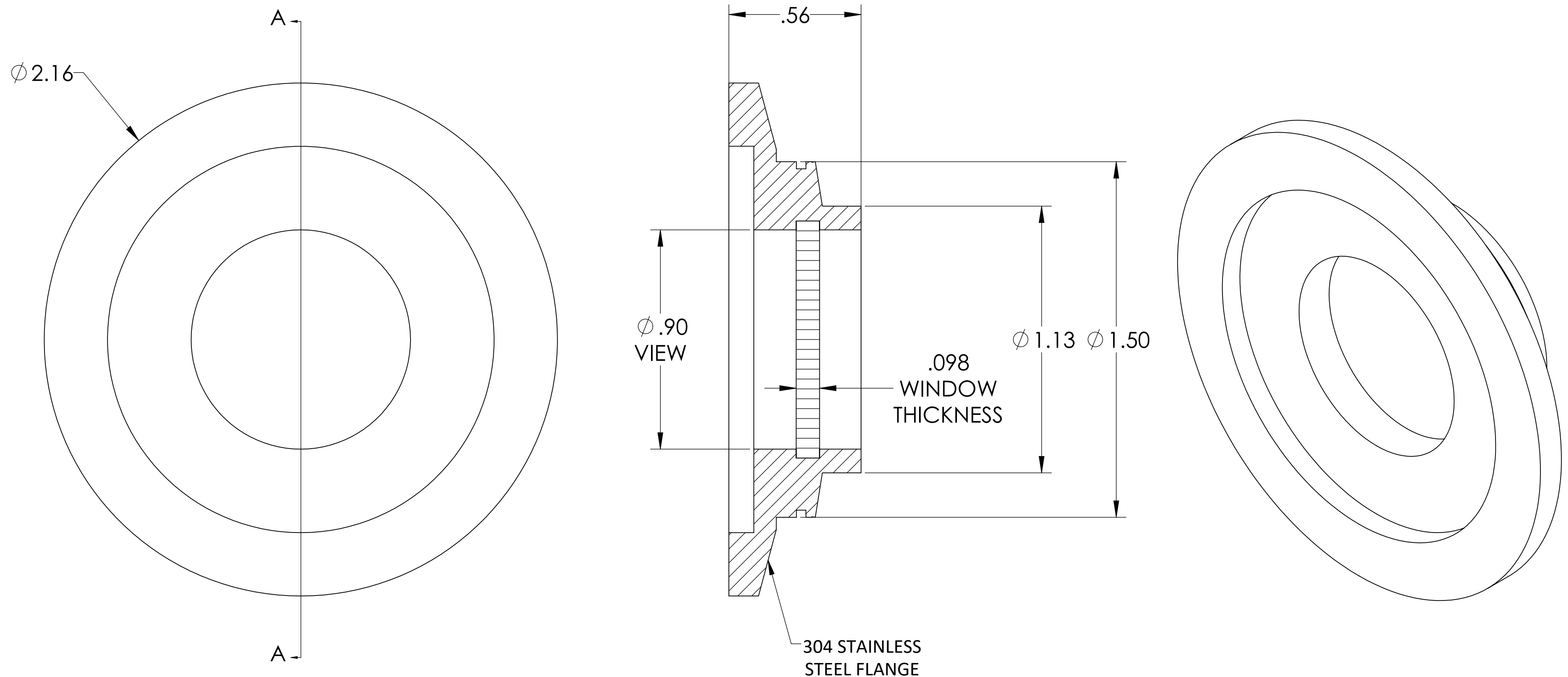


MPF PRODUCTS INC.



SPECIFICATIONS:

1. MATERIAL: ZINC SELENIDE
2. TWD < 1λ @ 632NM (PEAK TO VALLEY)
3. SURFACE FINISH: 40/20 SCRATCH-DIG
4. PARALLELISM < 3 ARC MINUTES
5. THERMAL RANGE: -100 °C TO 200 °C
6. LEAK RATE < 1×10^{-9} ATM-CC/SEC HE

Zinc Selenide (ZnSe) Viewport, UHV Rated Vacuum-Optics, 0.90" View Dia., 2.16" QF/KF

UNLESS OTHERWISE SPECIFIED:		QUOTATION #		N/A	
DIMENSIONS ARE IN INCHES TOLERANCES:		DRAWN	WJ	DATE	9/11/2015
ANGULAR: MACH $\pm 1/2^\circ$		CHECKED		9/11/2015	TITLE: VIEWPORT, ZNSE VACUUM OPTICS, 1" VIEW, QF/KF 40
TWO PLACE DECIMAL $\pm .030$		ENG APPR.	WJ	9/11/2015	
THREE PLACE DECIMAL $\pm .015$		THIRD ANGLE:			
MATERIAL		APPLICATION			
		NEXT ASSY	USED ON	DOWNLOADED FROM MPFPI.COM	
FINISH		SURFACE FINISH: $\sqrt{63}$ OR BETTER		DWG. NO.	REV
PLATING		UNLESS OTHERWISE SPECIFIED:		A8434-1-QF	
		ALL DIAMETERS CONCENTRIC WITHIN .005. REMOVE ALL BURRS AND SHARP EDGES		Thursday, July 11, 2019 11:50:31 AM	