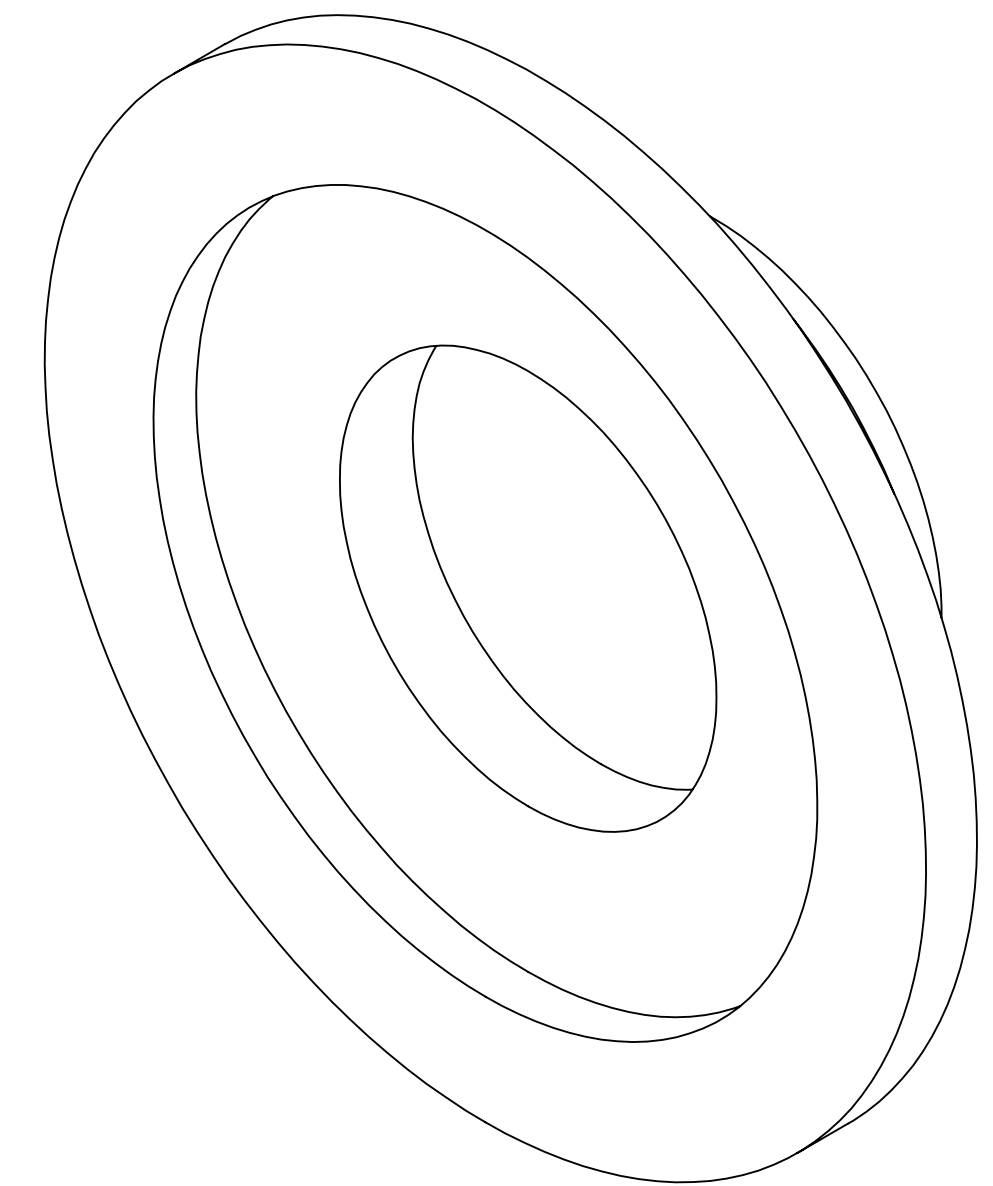
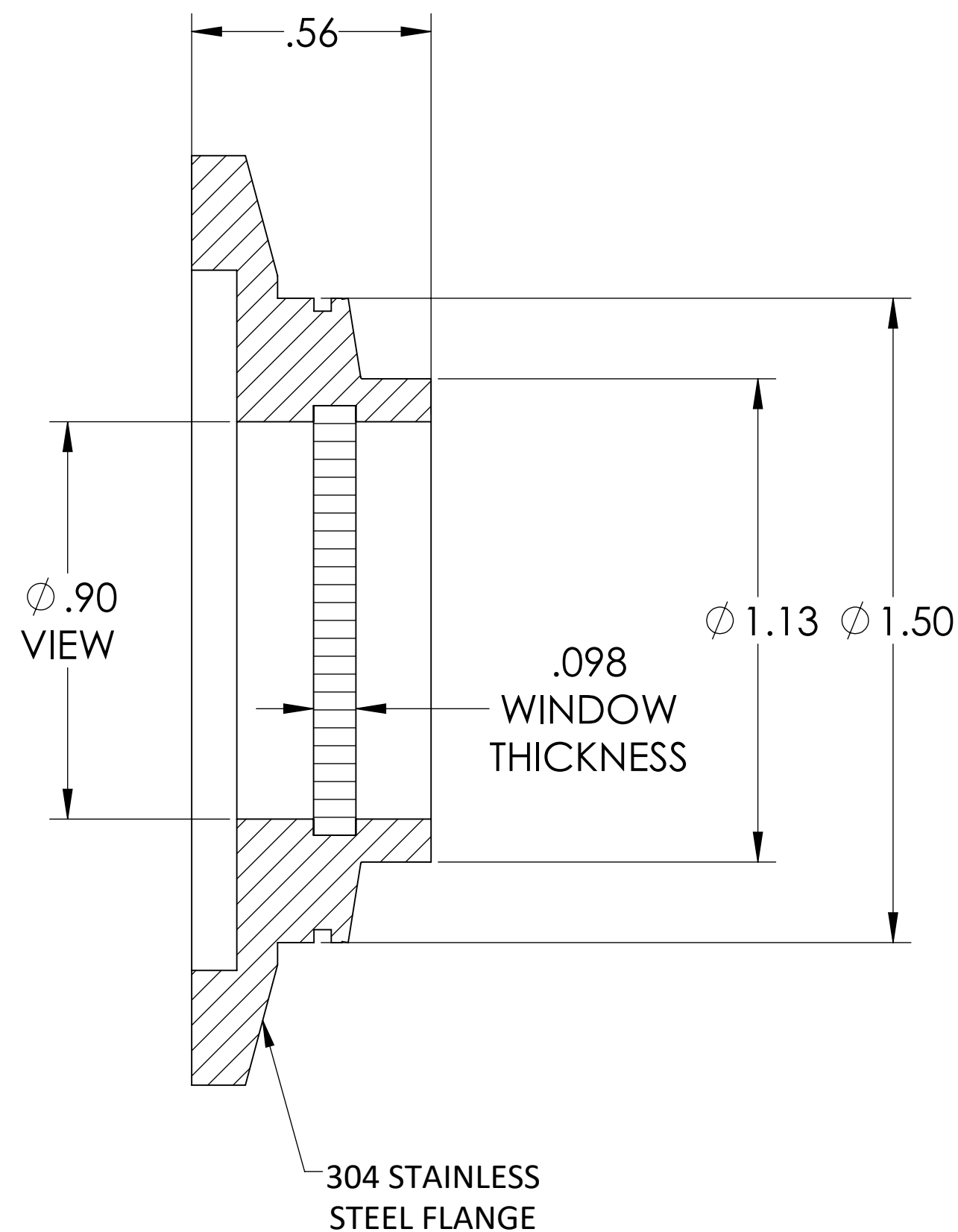
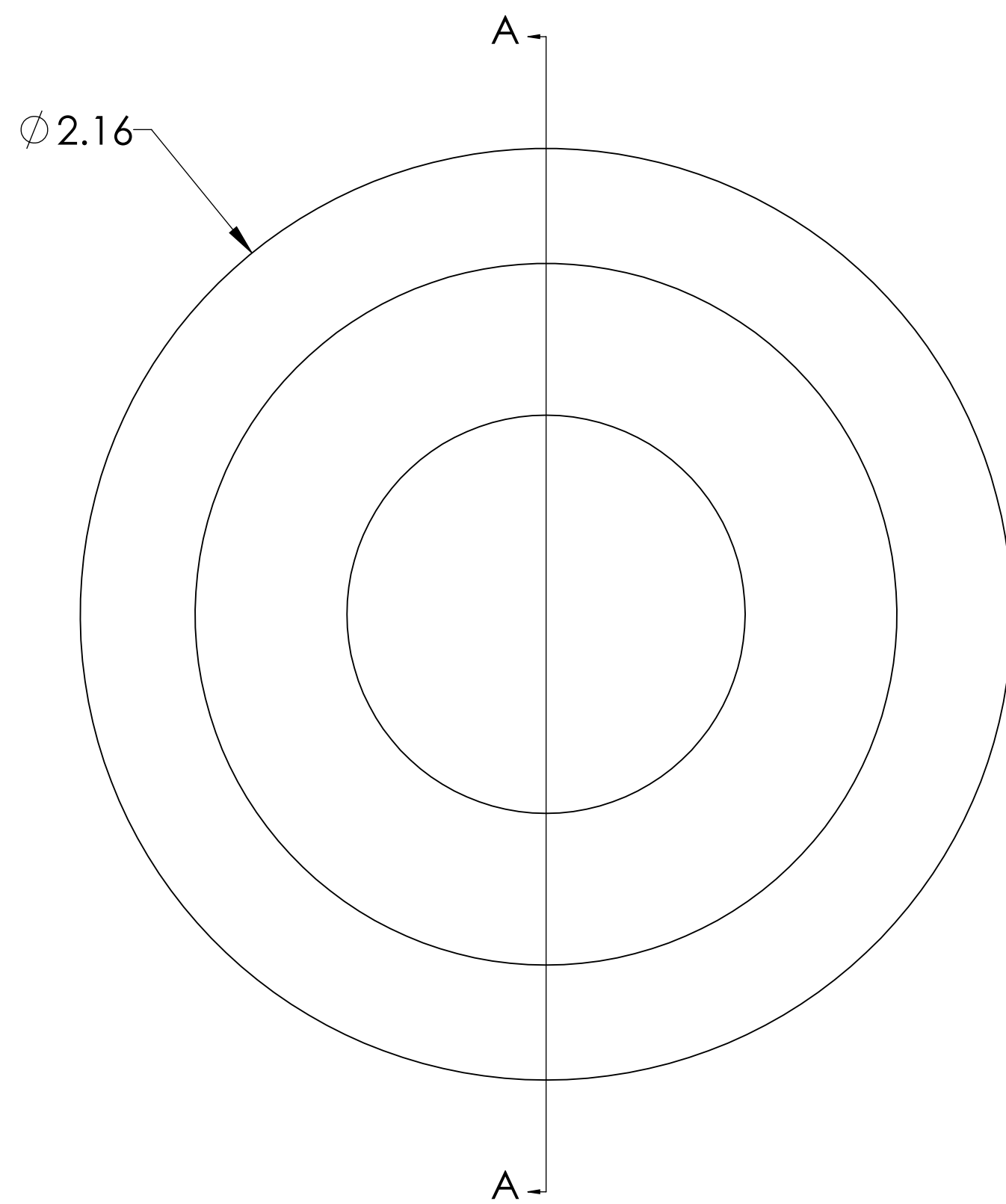


MPF PRODUCTS INC.



SPECIFICATIONS:

1. MATERIAL: ZINC SELENIDE
2. TWD <math>< 1\lambda @ 632\text{NM}</math> (PEAK TO VALLEY)
3. SURFACE FINISH: 40/20 SCRATCH-DIG
4. PARALLELISM <math>< 3</math> ARC MINUTES
5. THERMAL RANGE: -100 °C TO 200 °C
6. LEAK RATE <math>< 1 \times 10^{-9}</math> ATM-CC/SEC HE

Zinc Selenide (ZnSe) Viewport, UHV Rated Vacuum-Optics, 0.90" View Dia., 2.16" QF/KF

UNLESS OTHERWISE SPECIFIED:		QUOTATION #		N/A	
DIMENSIONS ARE IN INCHES		NAME	DATE	MPF PRODUCTS INC.	
TOLERANCES:		DRAWN	9/11/2015		
ANGULAR: MACH $\pm 1/2^\circ$		CHECKED	9/11/2015		
TWO PLACE DECIMAL $\pm .030$		ENG APPR.	9/11/2015		
THREE PLACE DECIMAL $\pm .015$		THIRD ANGLE:		VIEWPORT, ZNSE VAC-OPTICS, 1" VIEW, QF/KF 40	
MATERIAL					
FINISH		APPLICATION		DOWNLOADED FROM MPFPI.COM	
PLATING		NEXT ASSY	USED ON	DWG. NO.	
		SURFACE FINISH: $\sqrt{63}$ OR BETTER		A8434-1-QF	
		UNLESS OTHERWISE SPECIFIED:		REV	
		ALL DIAMETERS CONCENTRIC WITHIN .005. REMOVE ALL BURRS AND SHARP EDGES		Thursday, January 24, 2019 12:45:43 PM	