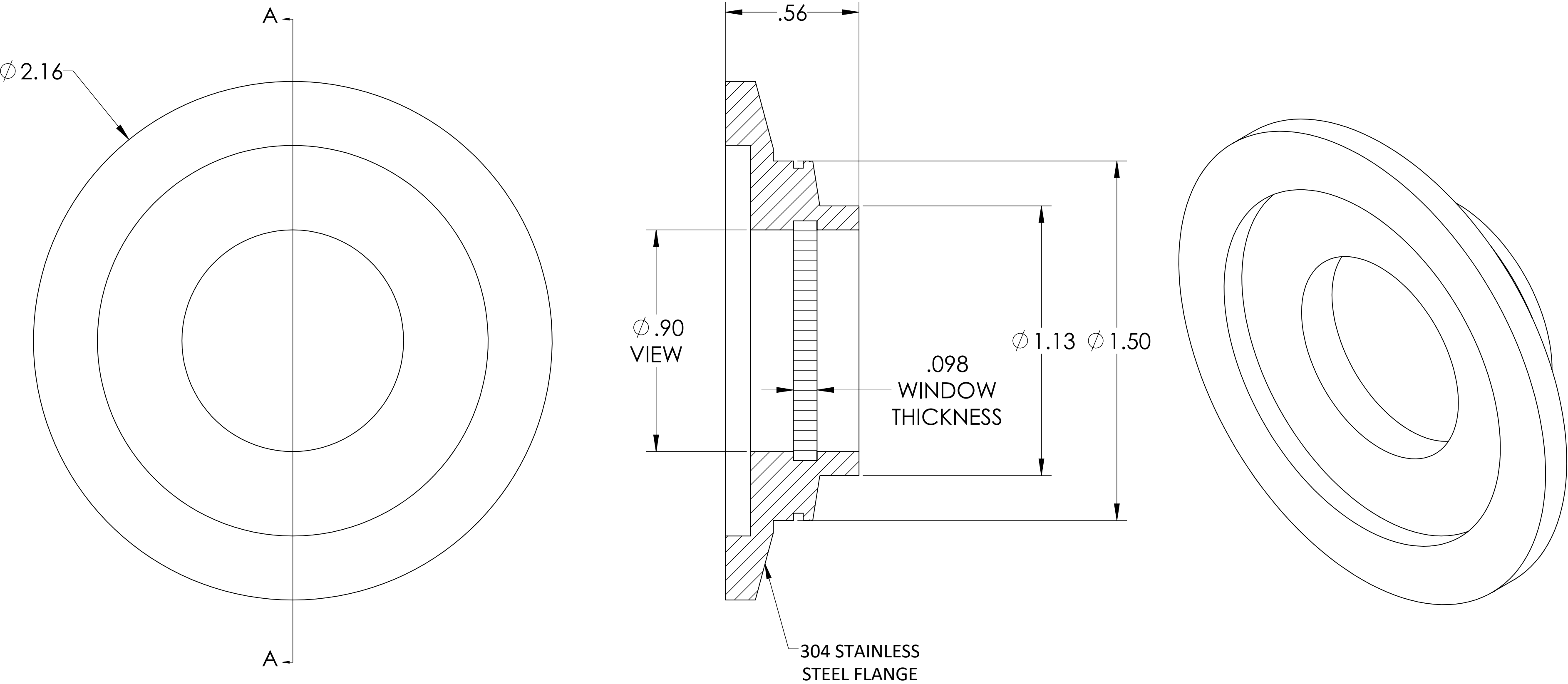
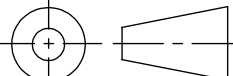
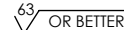


MPF PRODUCTS INC.



- SPECIFICATIONS:
1. MATERIAL: SINGLE CRYSTAL, 0° CALCIUM FLUORIDE
  2. TWD <  $\lambda/4$  @ 632NM (PEAK TO VALLEY)
  3. SURFACE FINISH: 20/10 SCRATCH-DIG
  4. PARALLELISM < 3 ARC MINUTES
  5. THERMAL RANGE: -100 °C TO 200 °C
  6. LEAK RATE < 1 X 10-9 ATM-CC/SEC HE

Calcium Fluoride (CaF2)Viewport, UHV Rated Vacuum-Optics, 0.90" View Dia., 2.16" QF/KF

UNLESS OTHERWISE SPECIFIED:		QUOTATION #		N/A	
DIMENSIONS ARE IN INCHES TOLERANCES:  ANGULAR: MACH ± 1/2° TWO PLACE DECIMAL    ± .030 THREE PLACE DECIMAL   ± .015			NAME	DATE	MPF PRODUCTS INC.
		DRAWN	WJ	9/11/2015	
		CHECKED		9/11/2015	
		ENG APPR.	WJ	9/11/2015	
MATERIAL		THIRD ANGLE:			TITLE:  VIEWPORT, CAF2 VAC- OPTICS, 1" VIEW, QF/KF 40
					
		APPLICATION			
		NEXT ASSY                  USED ON			
FINISH		SURFACE FINISH: 			DOWNLOADED FROM MPFPI.COM
PLATING		UNLESS OTHERWISE SPECIFIED:  ALL DIAMETERS CONCENTRIC WITHIN .005. REMOVE ALL BURRS AND SHARP EDGES			DWG. NO.                  A8434-2-QF                  REV
Thursday, January 24, 2019 12:45:16 PM					