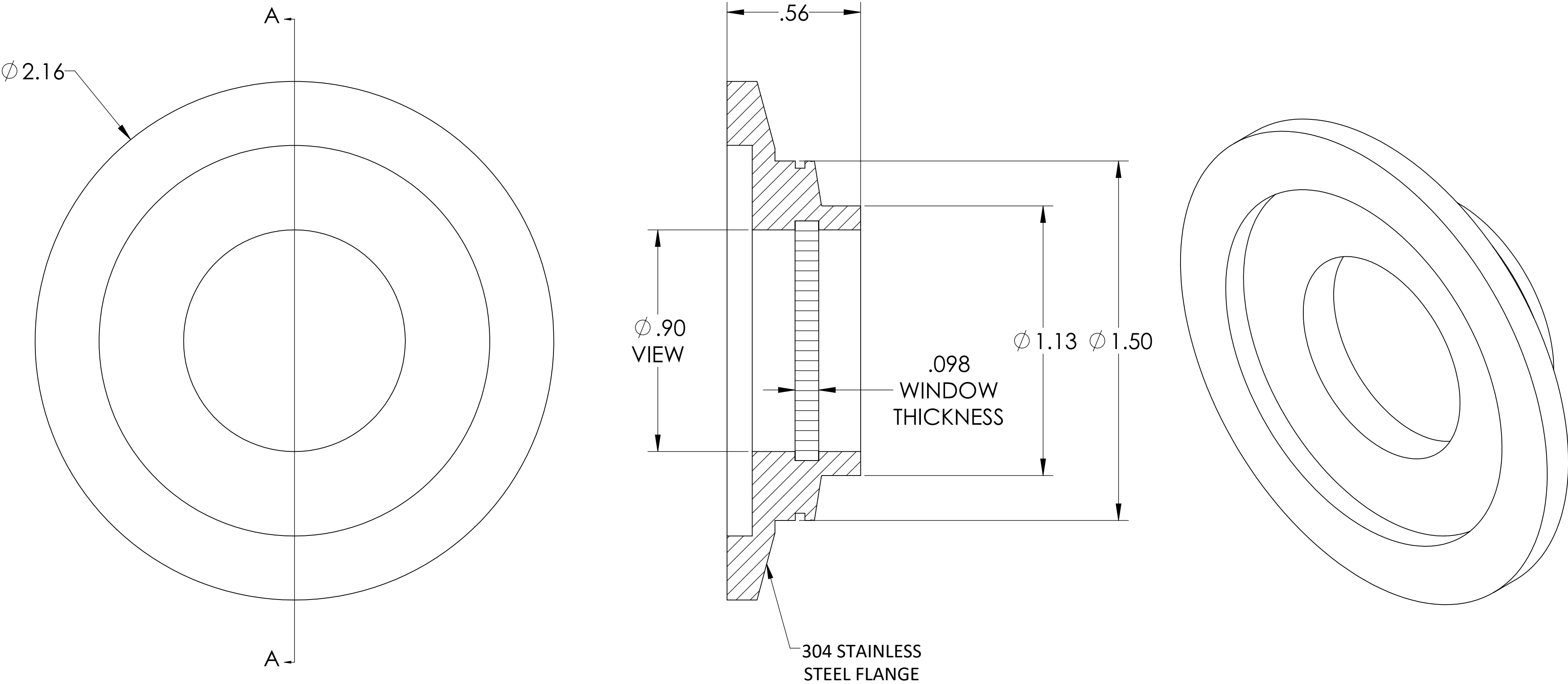
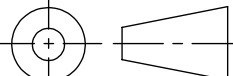
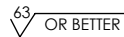


MPF PRODUCTS INC.



- SPECIFICATIONS:
- 1. MATERIAL: SINGLE CRYSTAL, 0° MAGNESIUM FLUORIDE
 - 2. TWD < 1λ @ 632NM (PEAK TO VALLEY)
 - 3. SURFACE FINISH: 20/10 SCRATCH-DIG
 - 4. PARALLELISM < 3 ARC MINUTES
 - 5. THERMAL RANGE: -100 °C TO 200 °C
 - 6. LEAK RATE < 1 X 10-9 ATM-CC/SEC HE

Magnesium Fluoride (MgF2)Viewport, UHV Rated Vacuum-Optics, 0.90" View Dia., 2.16" QF/KF

UNLESS OTHERWISE SPECIFIED:		QUOTATION #		N/A	
DIMENSIONS ARE IN INCHES TOLERANCES: ANGULAR: MACH ± 1/2° TWO PLACE DECIMAL ± .030 THREE PLACE DECIMAL ± .015			NAME	DATE	MPF PRODUCTS INC.
		DRAWN	WJ	9/11/2015	
		CHECKED		9/11/2015	
		ENG APPR.	WJ	9/11/2015	
MATERIAL		THIRD ANGLE:			TITLE: VIEWPORT, MGF2 VAC- OPTICS, 1" VIEW, QF/KF 40
					
		APPLICATION			
		NEXT ASSY USED ON			
FINISH		SURFACE FINISH: 			DOWNLOADED FROM MPFPI.COM
PLATING		UNLESS OTHERWISE SPECIFIED: ALL DIAMETERS CONCENTRIC WITHIN .005. REMOVE ALL BURRS AND SHARP EDGES			
					DWG. NO. A8434-3-QF REV
Thursday, January 24, 2019 12:42:47 PM					