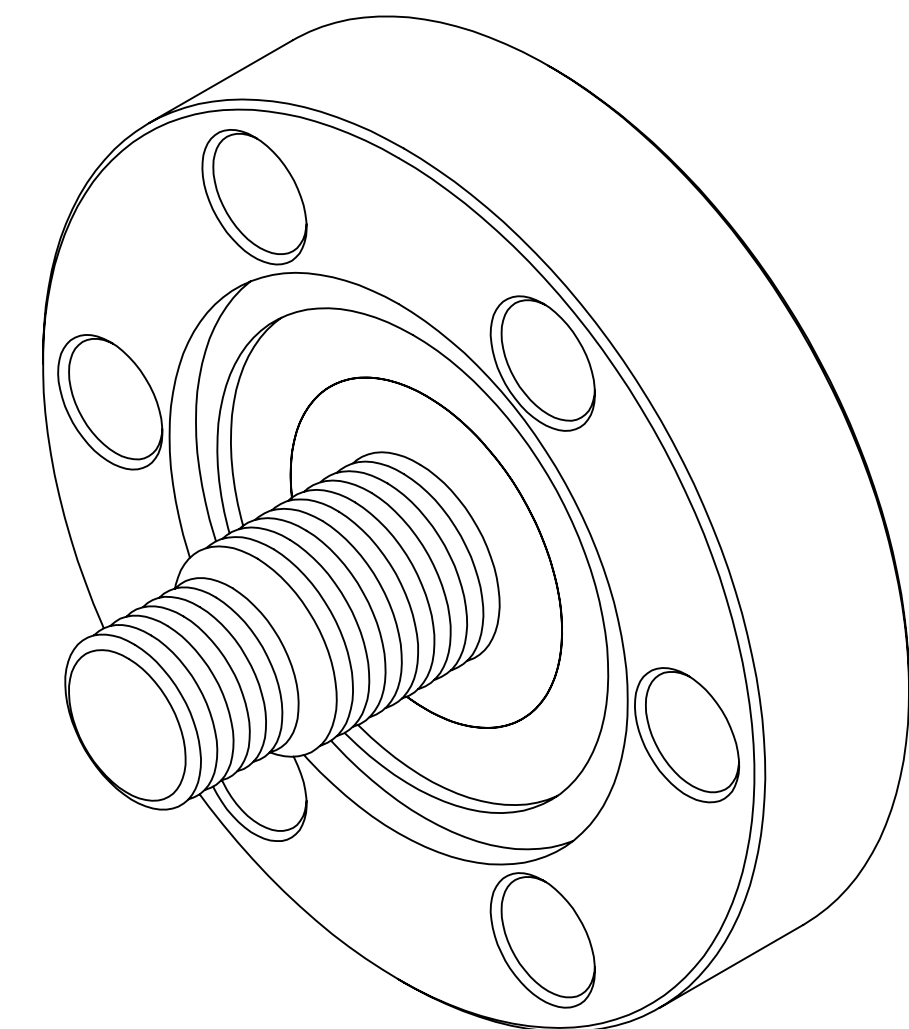
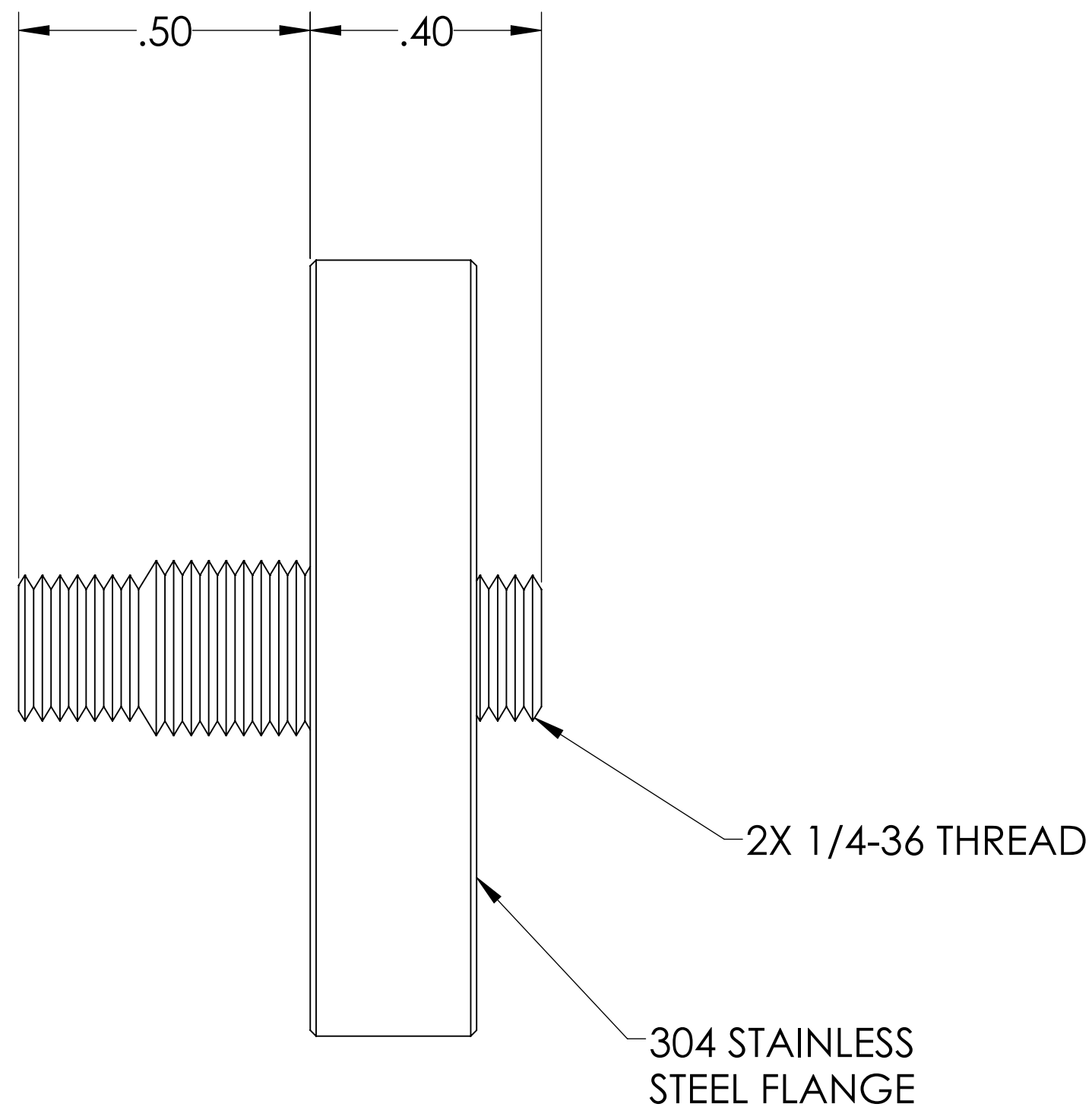
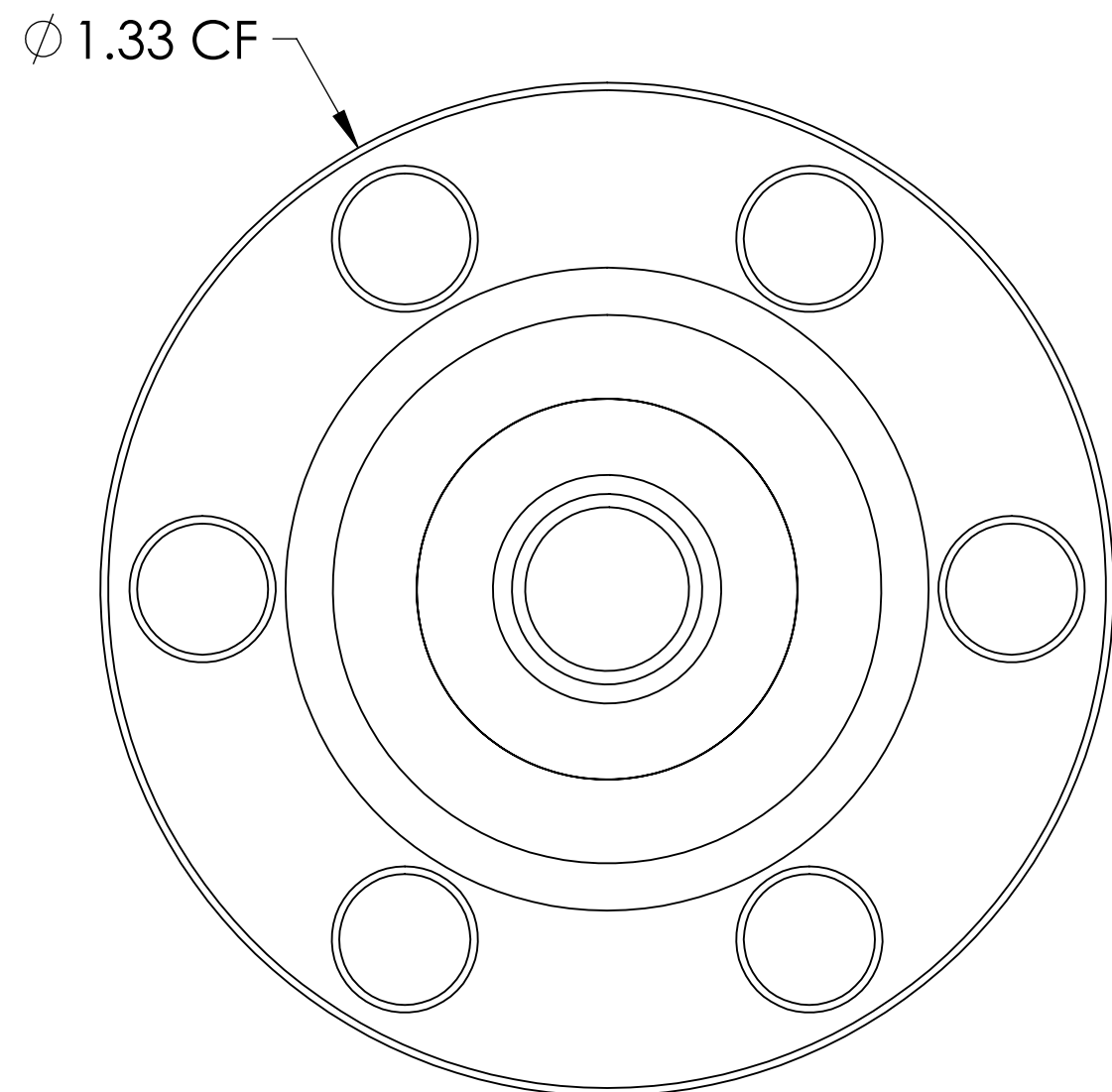


# MPF PRODUCTS INC.



**NOTE:**

1. SHIELD: GROUNDED
2. VOLTAGE: 1000 VOLTS DC
3. CURRENT: 1 AMP
4. TEMPERATURE RATING: -65 TO 200°C
5. IMPEDANCE: 50 OHM (0-18 GHz)
6. LEAK RATE <math>< 1 \times 10^{-9}</math> ATMCC/SEC HE

SMA Coaxial Feedthrough, 50 Ohm, 18 GHz, 1 Pin, Grounded Shield, Double Ended, 1.33" Conflat Flange

UNLESS OTHERWISE SPECIFIED:	QUOTATION #		N/A
DIMENSIONS ARE IN INCHES TOLERANCES:	DRAWN	NAME	DATE
ANGULAR: MACH $\pm 1/2^\circ$	WJ	WJ	9/11/2015
TWO PLACE DECIMAL $\pm .030$	CHECKED		9/11/2015
THREE PLACE DECIMAL $\pm .015$	ENG APPR.	WJ	9/11/2015
MATERIAL	THIRD ANGLE:		
	APPLICATION		
	NEXT ASSY	USED ON	
FINISH	SURFACE FINISH:		63/ OR BETTER
PLATING	UNLESS OTHERWISE SPECIFIED:		
	ALL DIAMETERS CONCENTRIC WITHIN .005.		REMOVE ALL BURRS AND SHARP EDGES
	TITLE:		SMA COAXIAL FEEDTHROUGH, 50 OHM, 18GHZ, 1 PIN, GROUNDED SHIELD, 1.33" CF
	DWG. NO.		A8882-1-CF
	REV		
	DOWNLOADED FROM MPFPI.COM		
	Monday, July 22, 2019 1:16:08 PM		