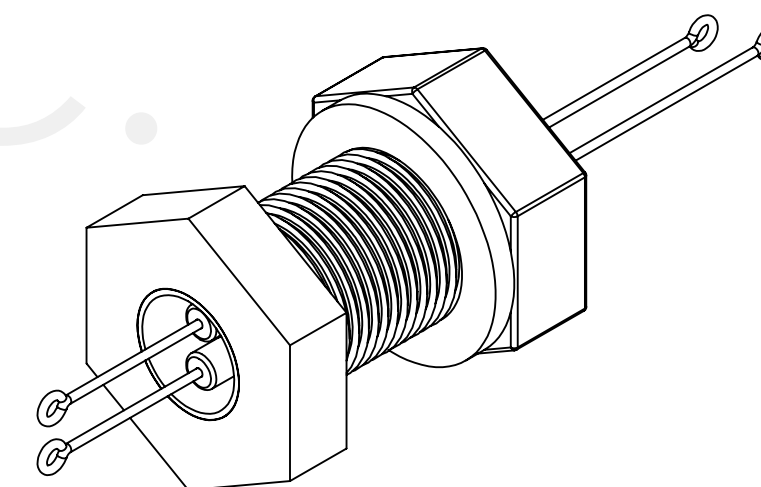
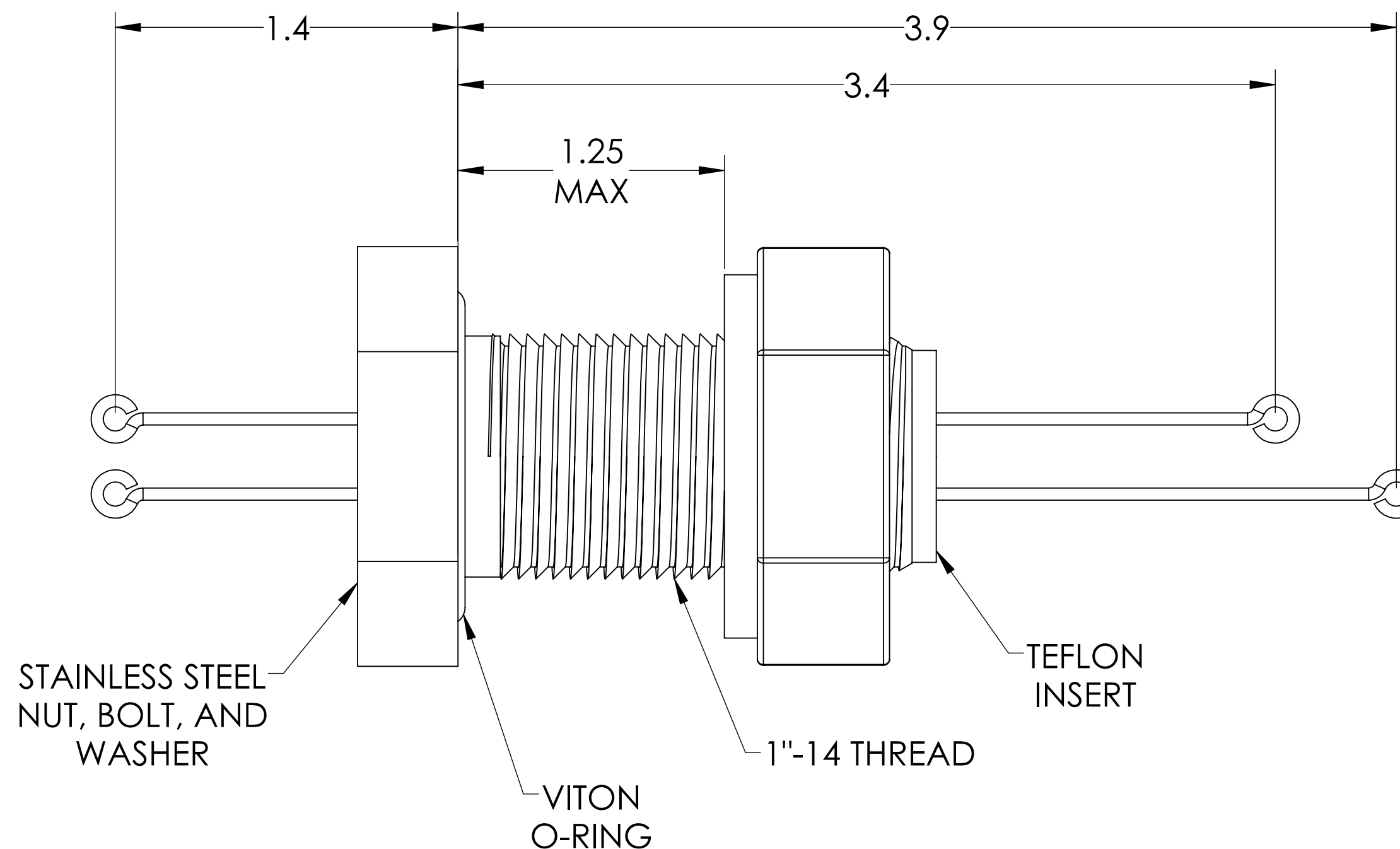
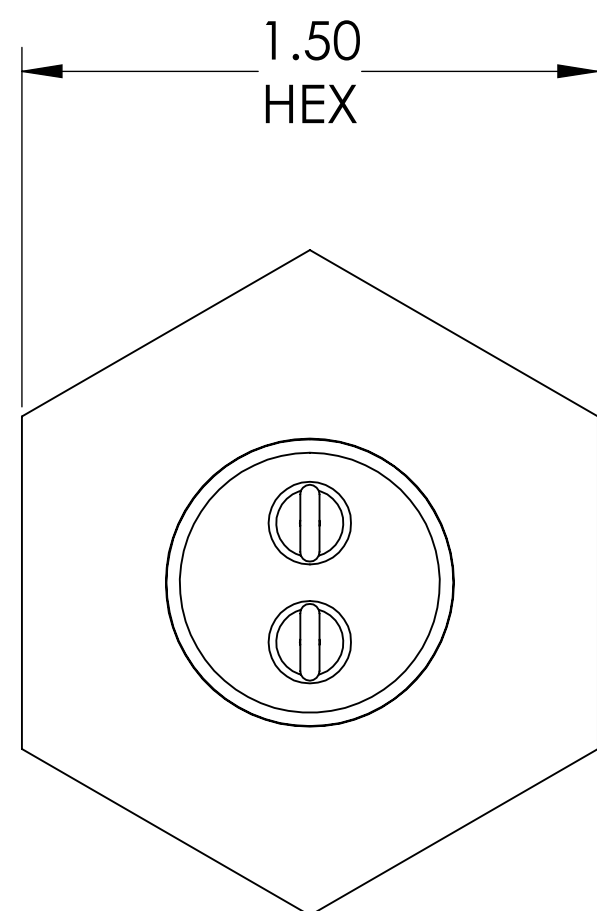


MPF PRODUCTS INC.

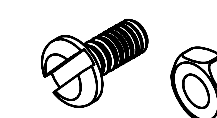


NOTES:

- * TYPE T:
CONSTANTAN CONDUCTORS HAVE A NEGATIVE POLARITY (NON - MAGNETIC) AND THE VACUUM SIDE ENDS ARE LONGER.
OFHC COPPER CONDUCTORS HAVE A POSITIVE POLARITY (NON - MAGNETIC) AND THE VACUUM SIDE ENDS ARE SHORTER.
- * TYPE N:
NI-SI-MG CONDUCTORS HAVE A NEGATIVE POLARITY (NON - MAGNETIC) AND THE VACUUM SIDE ENDS ARE LONGER.
NI-CR-SI CONDUCTORS HAVE A POSITIVE POLARITY (NON - MAGNETIC) AND THE VACUUM SIDE ENDS ARE SHORTER.
- * TYPE R-S:
ALLOY 11 CONDUCTORS HAVE A NEGATIVE POLARITY (NON - MAGNETIC) AND THE VACUUM SIDE ENDS ARE LONGER.
OFHC COPPER CONDUCTORS HAVE A POSITIVE POLARITY (NON - MAGNETIC) AND THE VACUUM SIDE ENDS ARE SHORTER.



PART #	T/C TYPE
A0419-1-BP	T
A0419-2-BP	R-S
A0419-3-BP	N



SPECIFICATIONS:

1. TEMPERATURE RATING: -100 TO 450°C
2. LEAK RATE < 1X10-9 ATM CC/SEC HE

Thermocouple Feedthrough, 1 Pair, Screw-type Connector, 1" Baseplate Bolt

UNLESS OTHERWISE SPECIFIED:	QUOTATION #	N/A
DIMENSIONS ARE IN INCHES TOLERANCES:	NAME	DATE
ANGULAR: MACH ± 1/2°	DRAWN	9/11/2015
TWO PLACE DECIMAL ± .030	CHECKED	9/11/2015
THREE PLACE DECIMAL ± .015	ENG APPR.	9/11/2015
MATERIAL	THIRD ANGLE:	
FINISH	SURFACE FINISH:	63 OR BETTER
PLATING	UNLESS OTHERWISE SPECIFIED:	
	ALL DIAMETERS CONCENTRIC WITHIN .005.	REMOVE ALL BURRS AND SHARP EDGES
	APPLICATION	
	NEXT ASSY	USED ON
	TITLE:	MPF PRODUCTS INC.
	THERMOCOUPLE, 1 PAIR, SCREW-TYPE, 1" BASEPLATE	
	DOWNLOADED FROM MPFPI.COM	
	DWG. NO.	A0419
	REV	
	Monday, August 5, 2019 10:20:46 AM	