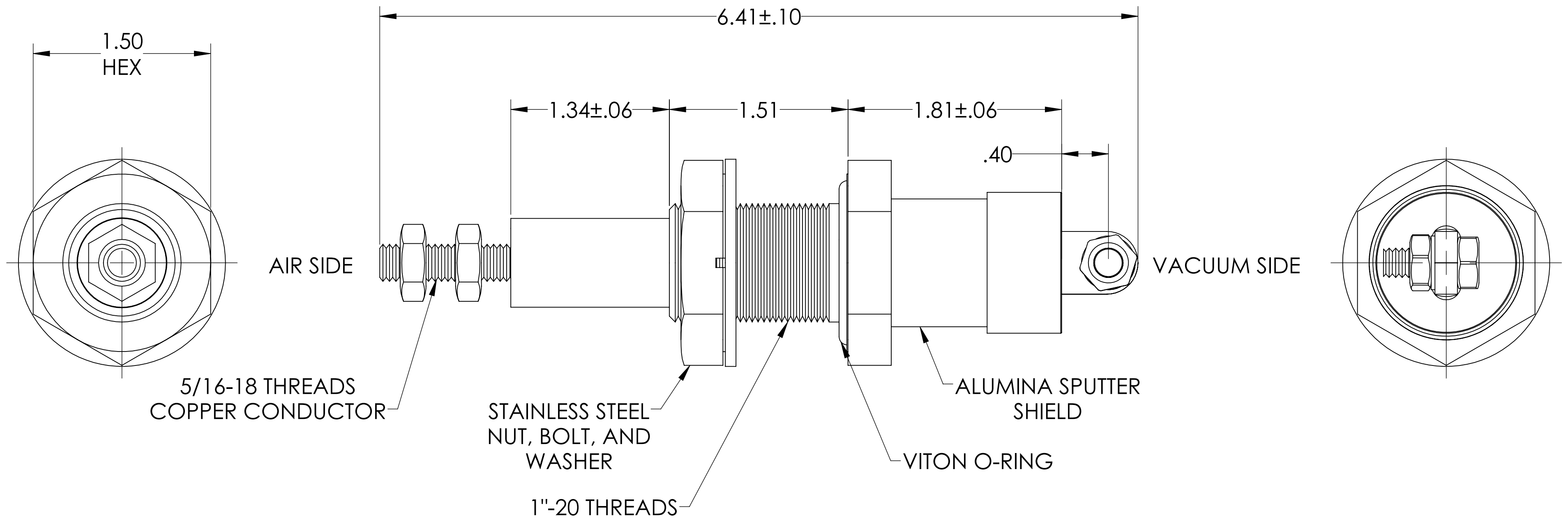
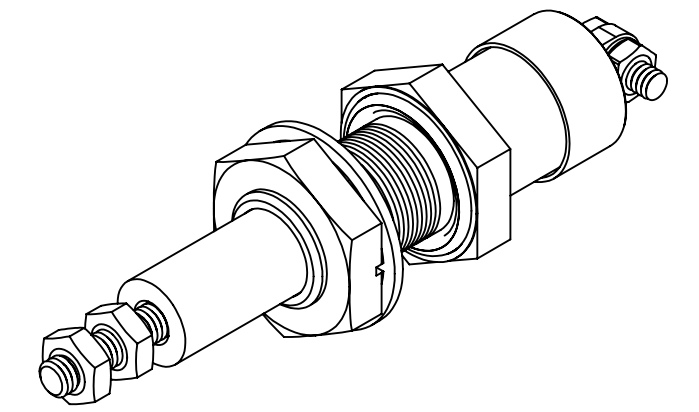


MPF PRODUCTS INC.



- NOTE:**
1. VOLTAGE: 12KV DC IN VACUUM
 2. CURRENT: 150 AMPS
 3. TEMPERATURE RATING: N/A

E-Beam Feedthrough, 12,000 Volts, 1 Pin, 1" Baseplate Bolt

UNLESS OTHERWISE SPECIFIED:		QUOTATION #		N/A	
DIMENSIONS ARE IN INCHES TOLERANCES:		NAME	DATE	MPF PRODUCTS INC.	
ANGULAR: MACH ± 1/2°		DRAWN	9/11/2015		
TWO PLACE DECIMAL ± .030		CHECKED	9/11/2015		
THREE PLACE DECIMAL ± .015		ENG APPR.	9/11/2015		
MATERIAL		THIRD ANGLE:		TITLE: POWER FEEDTHROUGH, 12KV, 150A, 1 PIN, 1" BASEPLATE	
FINISH					
PLATING		APPLICATION			
		NEXT ASSY	USED ON		
SURFACE FINISH:		63/ OR BETTER		DOWNLOADED FROM MPFPI.COM	
UNLESS OTHERWISE SPECIFIED:		ALL DIAMETERS CONCENTRIC WITHIN .005. REMOVE ALL BURRS AND SHARP EDGES		DWG. NO.	REV.
				A4655-1-BP	
				Tuesday, June 11, 2019 8:29:24 AM	