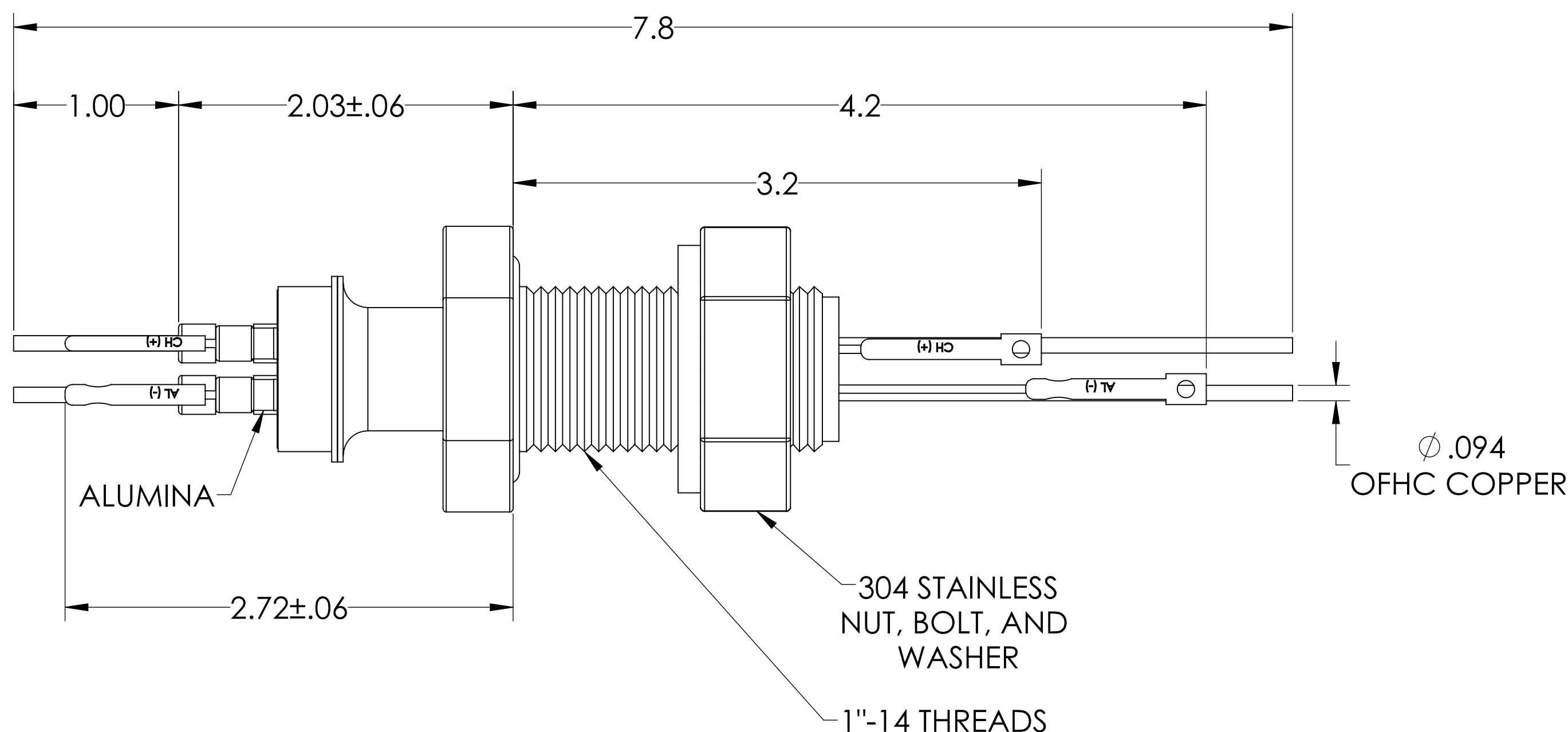
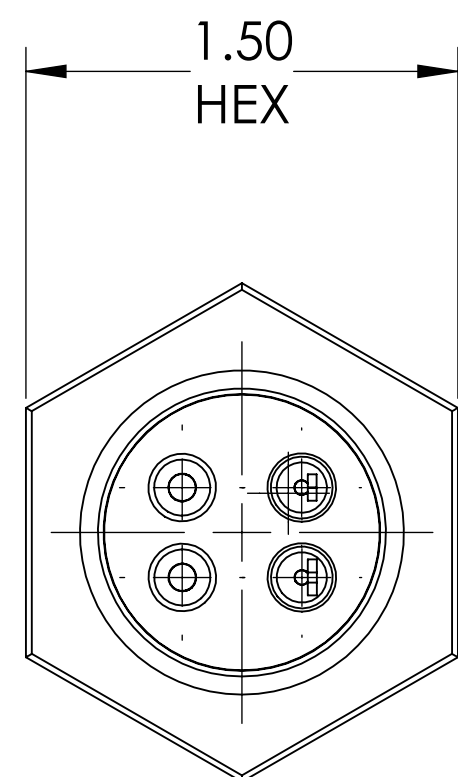
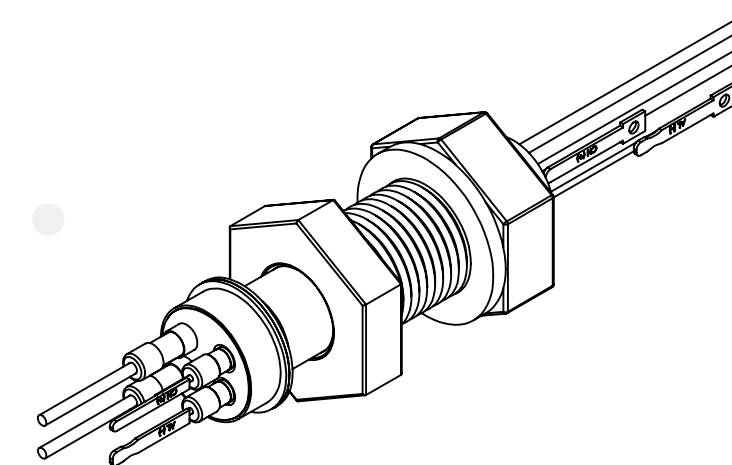


MPF PRODUCTS INC.

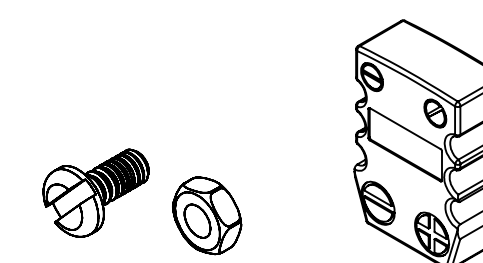


PART #	T/C TYPE
A5239-1-BP	K
A5239-2-BP	J
A5239-3-BP	C
A5239-4-BP	E

SPECIFICATIONS:

1. VOLTAGE: 5000 VOLTS DC
2. CURRENT: 50 AMPS
3. TEMPERATURE RATING: -100 TO 450°C
4. LEAK RATE < 1X10-9 ATM CC/SEC HE

Thermocouple-Power Feedthrough, 1 Pair , w/ Miniature TC Connector, 5000 Volts, 50 Amps 2 Pins, 1" Baseplate



UNLESS OTHERWISE SPECIFIED:		QUOTATION #		N/A	
DIMENSIONS ARE IN INCHES TOLERANCES:		NAME	DATE	MPF PRODUCTS INC.	
ANGULAR: MACH ± 1/2°		DRAWN	WJ	9/11/2015	TITLE: THERMOCOUPLE-POWER, 1 PAIR, 5000V, 50A, 2 PINS, 1" BASEPLATE
TWO PLACE DECIMAL ± .030		CHECKED		9/11/2015	
THREE PLACE DECIMAL ± .015		ENG APPR.	WJ	9/11/2015	
MATERIAL		THIRD ANGLE:		APPLICATION	
				NEXT ASSY	
FINISH		SURFACE FINISH: 63/ OR BETTER		USED ON	
PLATING		UNLESS OTHERWISE SPECIFIED:		DWG. NO.	
		ALL DIAMETERS CONCENTRIC WITHIN .005. REMOVE ALL BURRS AND SHARP EDGES		A5239	
				REV	
				Downloaded from MPFPI.COM	
				Tuesday, June 4, 2019 4:23:10 PM	