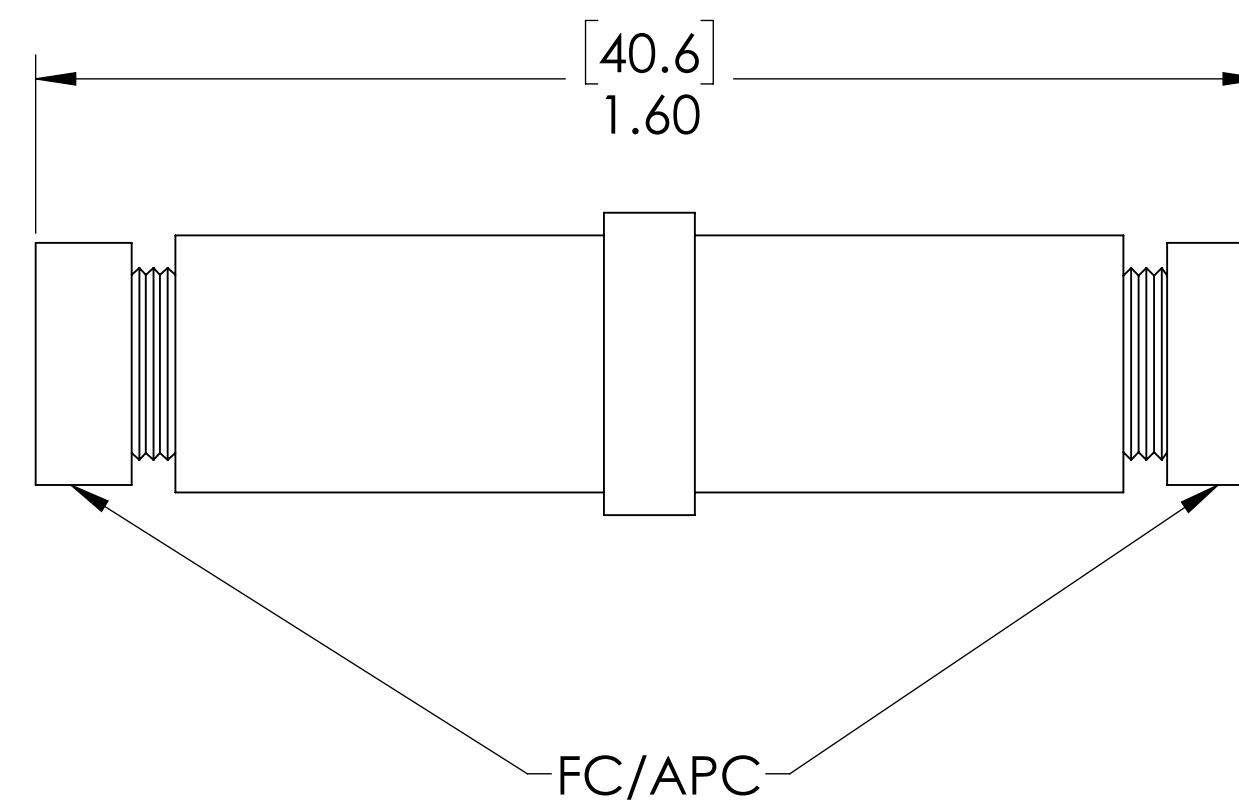
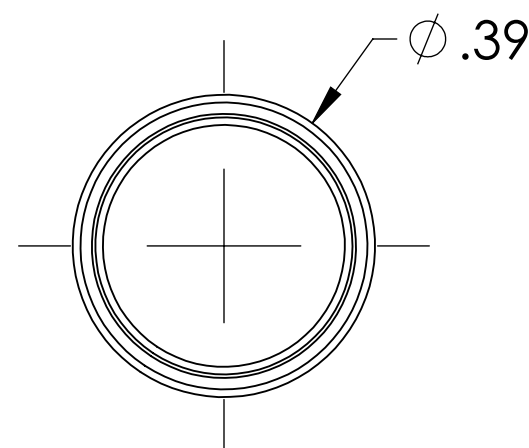
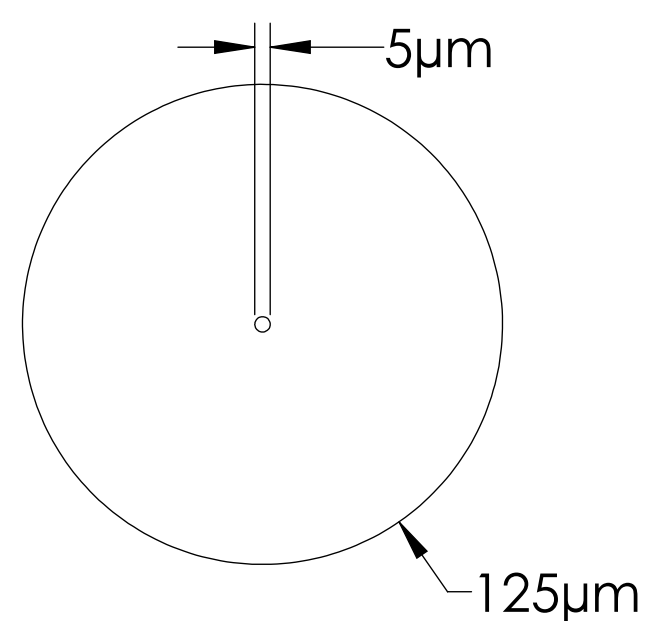


MPF PRODUCTS INC.

FIBER CONSTRUCTION



SM780 FC/APC NOTES:

1. WAVELENGTH: 780nm
2. NUMERICAL APERTURE: 0.12
3. CUT-OFF WAVELENGTH: 720nm
4. TYPICAL INSERTION LOSS: <1 dB
5. TYPICAL RETURN LOSS: > 60dB
6. FERRULE: 2.5mm CERAMICS (ZrO2)

Single Mode 780nm Fiber Optic Feedthrough, FC/APC Connector

UNLESS OTHERWISE SPECIFIED:	QUOTATION #		N/A
DIMENSIONS ARE IN INCHES	NAME	DATE	MPF PRODUCTS INC.
TOLERANCES:	DRAWN	9/11/2015	
ANGULAR: MACH ± 1/2°	CHECKED	9/11/2015	
TWO PLACE DECIMAL ± .030	ENG APPR.	9/11/2015	
THREE PLACE DECIMAL ± .015	THIRD ANGLE:		TITLE: SINGLE MODE FIBER OPTIC FEEDTHROUGH (FIBER SM780)
MATERIAL			
FINISH	APPLICATION		DOWNLOADED FROM MPFPI.COM
PLATING	NEXT ASSY	USED ON	
	SURFACE FINISH: 63/ OR BETTER		DWG. NO. A14867-1-W
	UNLESS OTHERWISE SPECIFIED:		REV
	ALL DIAMETERS CONCENTRIC WITHIN .005. REMOVE ALL BURRS AND SHARP EDGES		Friday, September 11, 2020 3:39:34 PM