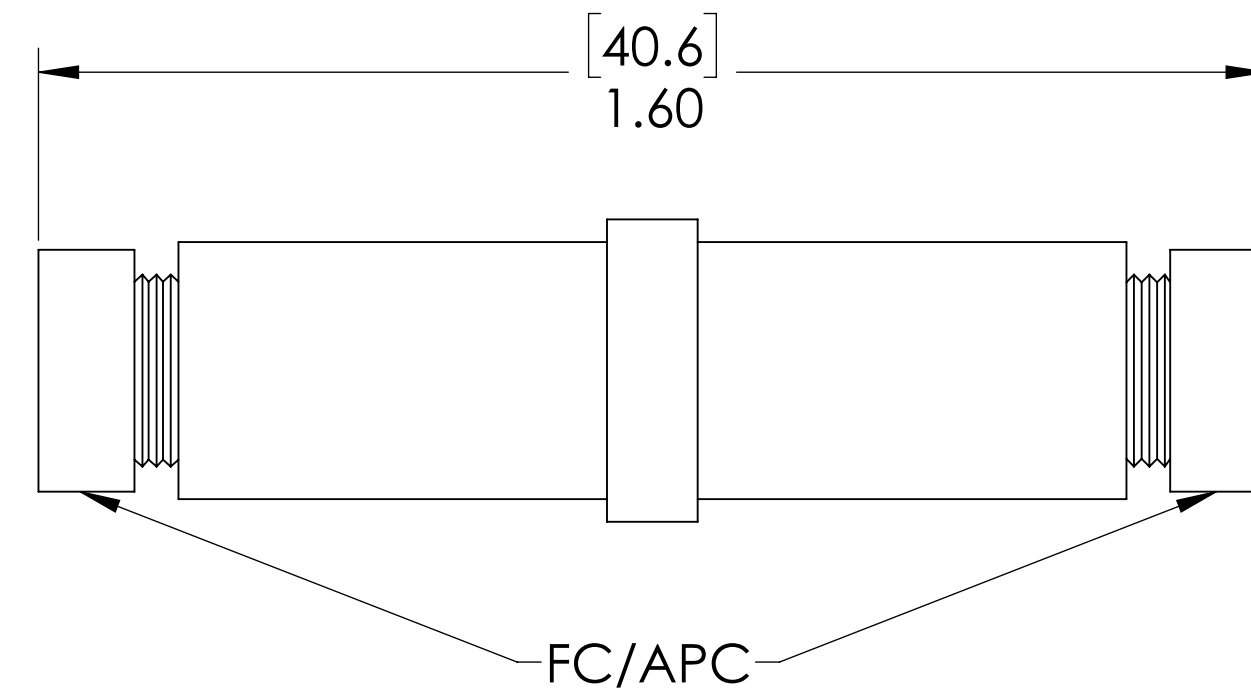
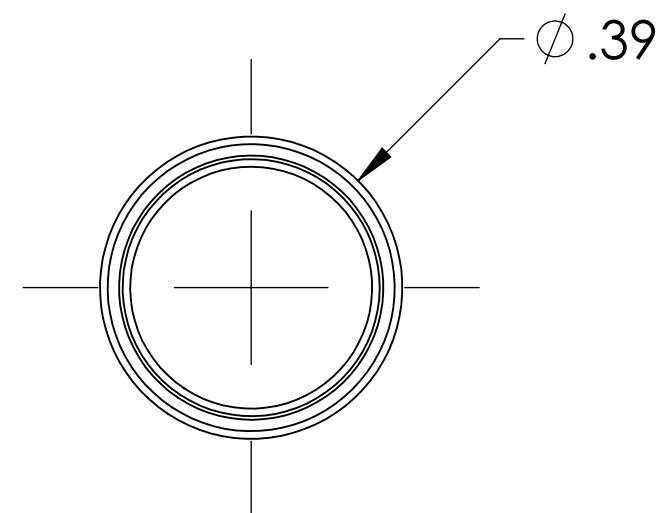
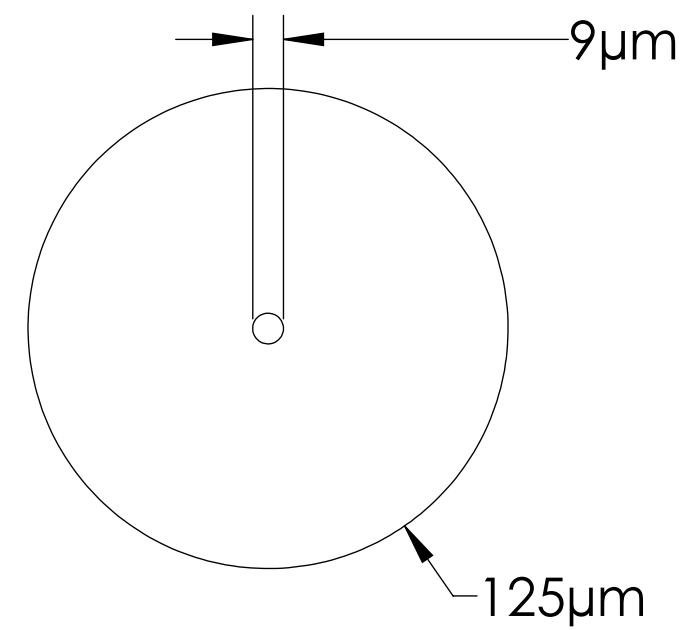


# MPF PRODUCTS INC.

## FIBER CONSTRUCTION



### SM1310 FC/APC NOTES:

1. WAVELENGTH: 1310nm / 1550nm
2. NUMERICAL APERTURE: 0.12
3. CUT-OFF WAVELENGTH: 1260nm
4. TYPICAL INSERTION LOSS: <0.5 dB
5. TYPICAL RETURN LOSS: > 60dB
6. FERRULE: 2.5mm CERAMICS (ZrO2)

Single Mode 1310nm Fiber Optic Feedthrough, FC/APC Connector

UNLESS OTHERWISE SPECIFIED:		QUOTATION #		N/A	
DIMENSIONS ARE IN INCHES TOLERANCES:		NAME	DATE	MPF PRODUCTS INC.	
ANGULAR: MACH ± 1/2°		WJ	9/11/2015		
TWO PLACE DECIMAL ± .030		CHECKED	9/11/2015		
THREE PLACE DECIMAL ± .015		ENG APPR.	WJ 9/11/2015		
MATERIAL		THIRD ANGLE:		TITLE: <b>SINGLE MODE FIBER OPTIC FEEDTHROUGH (FIBER SM1310)</b>	
FINISH		APPLICATION			
PLATING		NEXT ASSY USED ON			
SURFACE FINISH:		63/ OR BETTER		DOWNLOADED FROM MPFPI.COM	
UNLESS OTHERWISE SPECIFIED:		ALL DIAMETERS CONCENTRIC WITHIN .005. REMOVE ALL BURRS AND SHARP EDGES		DWG. NO. <b>A14869-1-W</b>	
				REV	
				Friday, September 11, 2020 3:39:05 PM	