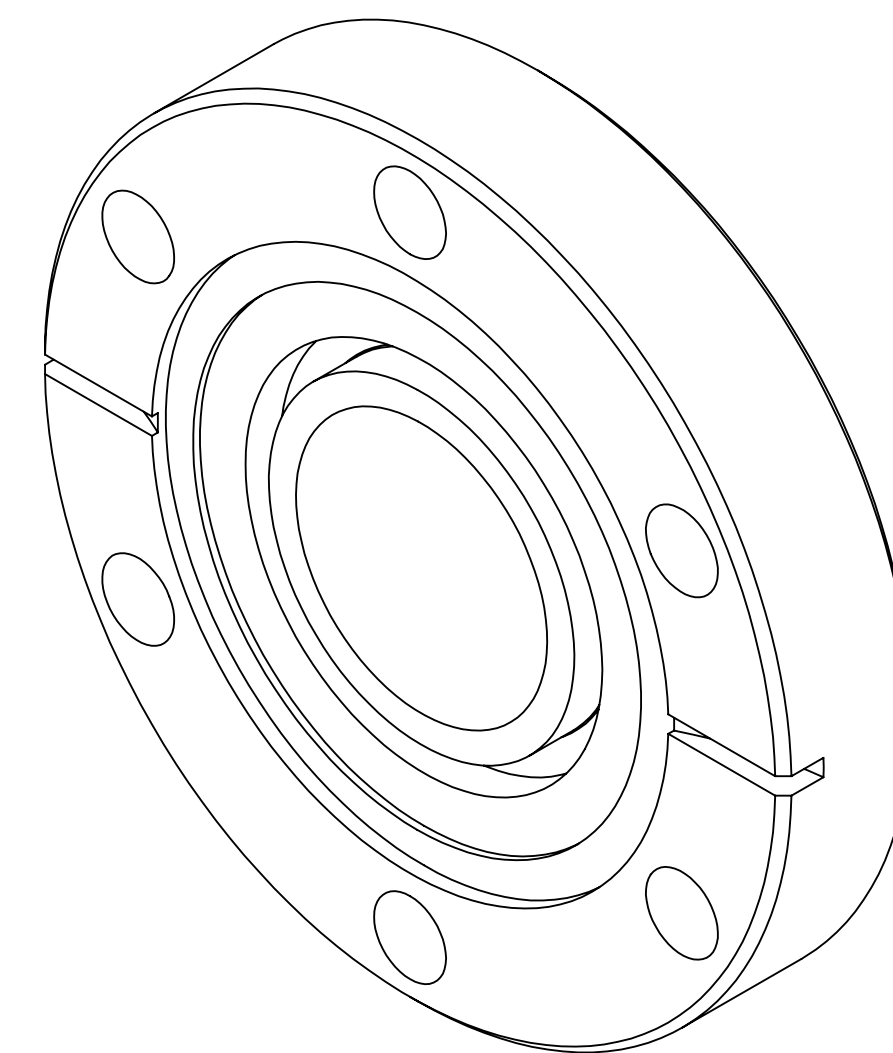
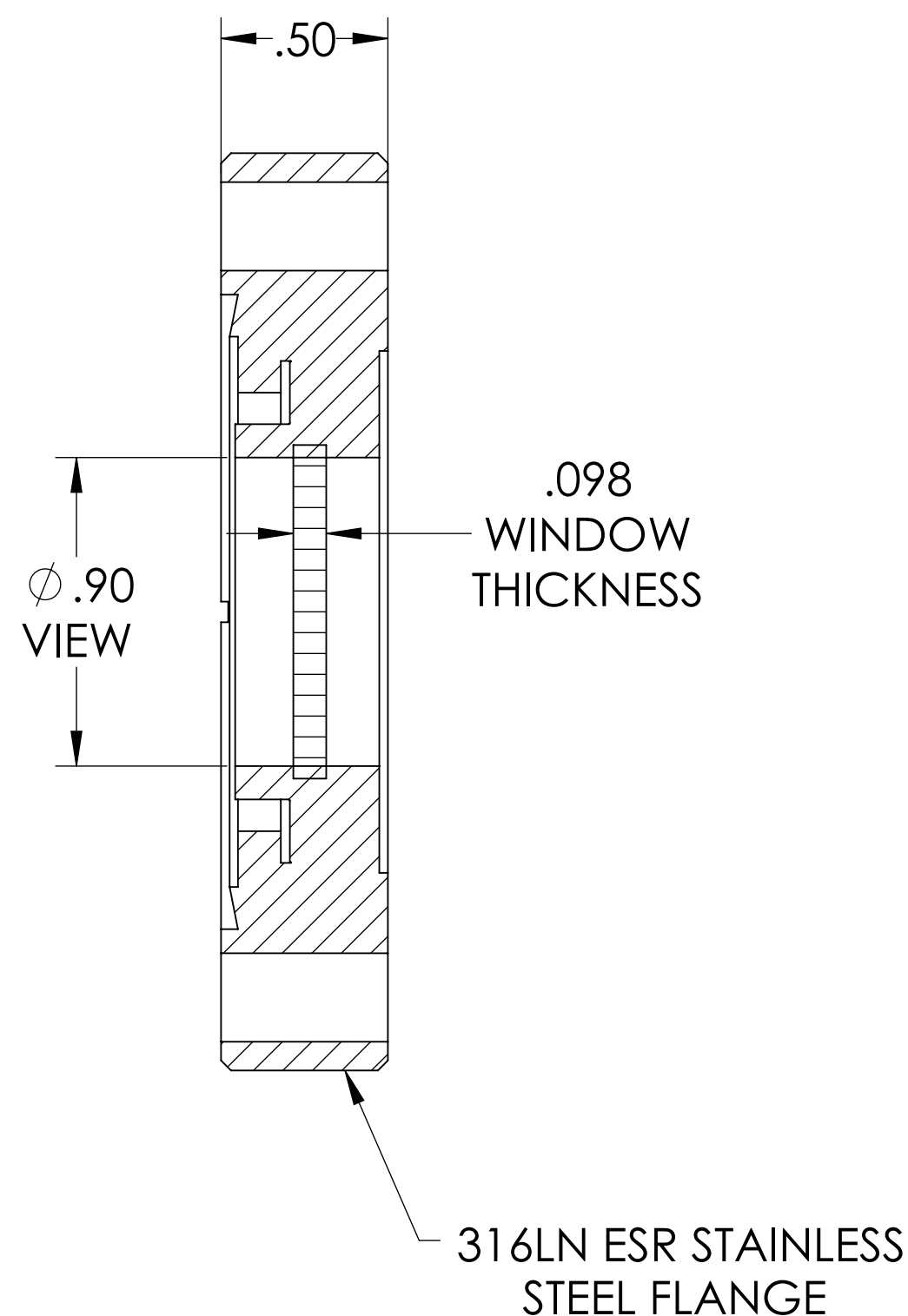
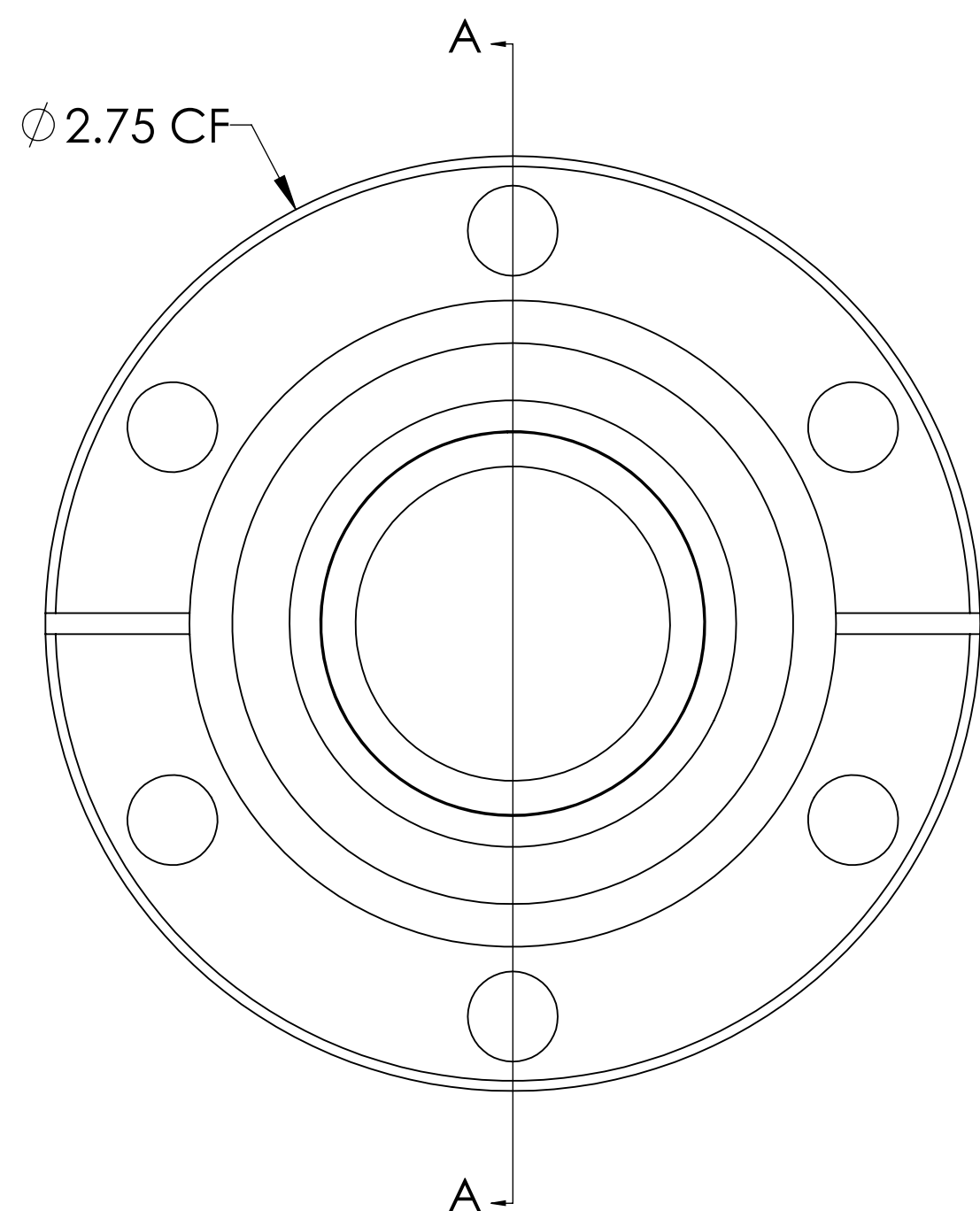


MPF PRODUCTS INC.



SPECIFICATIONS:

1. MATERIAL: ZINC SELENIDE
2. TWD < 1λ @ 632NM (PEAK TO VALLEY)
3. PARALLELISM < 3 ARC MINUTES
4. SURFACE FINISH: 40/20 SCRATCH-DIG
5. THERMAL RANGE: -100 °C TO 200 °C
6. MAGNETIC PERMEABILITY (μ) < 1.01
7. LEAK RATE < 1 X 10-9 ATM/CC SEC HE

Zinc Selenide (ZnSe) Viewport w/ BBAR Coating Both Sides for 8-12 microns, Non-Magnetic, UHV Rated Vacuum-Optics, 0.90" View Dia, 2.75" Conflat Flange(316LN)

UNLESS OTHERWISE SPECIFIED:		QUOTATION #		N/A	
DIMENSIONS ARE IN INCHES TOLERANCES:		NAME	DATE	MPF PRODUCTS INC.	
ANGULAR: MACH ± 1/2°		DRAWN	9/11/2015		
TWO PLACE DECIMAL ± .030		CHECKED	9/11/2015		
THREE PLACE DECIMAL ± .015		ENG APPR.	WJ 9/11/2015		
MATERIAL		THIRD ANGLE:		VIEWPORT, ZNSE VACUUM OPTICS, NON-MAGNETIC 1" VIEW, 275CF	
		APPLICATION			
		NEXT ASSY	USED ON		
FINISH		SURFACE FINISH: 63/ OR BETTER		DOWNLOADED FROM MPFPI.COM	
PLATING		UNLESS OTHERWISE SPECIFIED:		DWG. NO.	REV
ALL DIAMETERS CONCENTRIC WITHIN .005. REMOVE ALL BURRS AND SHARP EDGES				A18101-4-CF	
				Monday, October 21, 2019 4:19:28 PM	