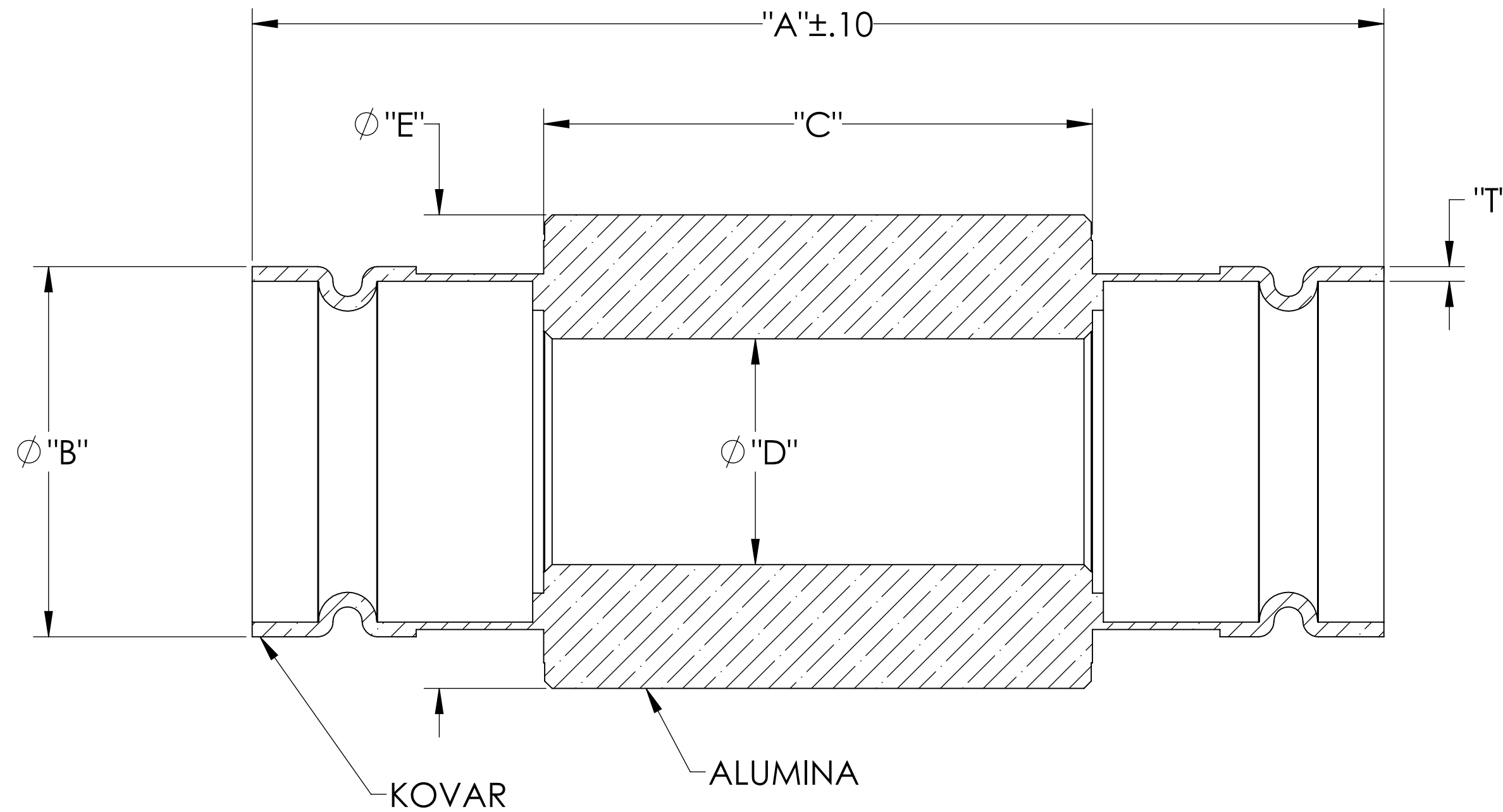
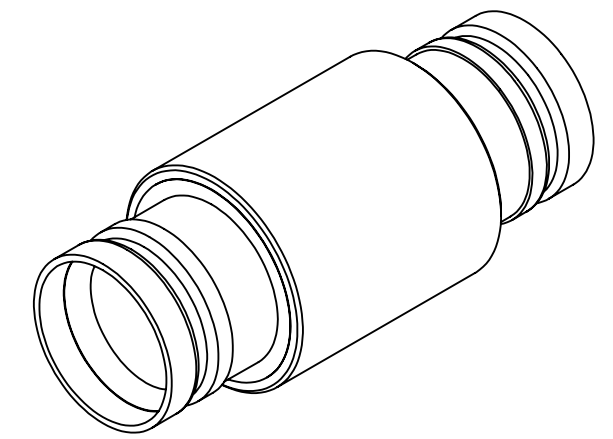


MPF PRODUCTS INC.



PART #	"A" $\pm .10$	"B"	"C" $\pm .020$	ϕ "D" $\pm .020$	ϕ "E" $\pm .030$	"T" $+ .005/-0$	VOLTAGE
A1988-1-W	1.55	.508	.75	.31	.65	.020	10KV
A1988-2-W	2.58	1.20	1.50	.90	1.40	.020	20KV
A1988-3-W	3.36	2.375	2.00	2.00	2.50	.025	30KV
A1988-4-W	4.36	2.80	3.00	2.40	3.00	.025	40KV

SPECIFICATIONS:

1. VOLTAGE: 10, 20, 30, 40KV
2. TEMPERATURE: -200°C TO 450°C
3. LEAK RATE <math>< 1 \times 10^{-9}</math> ATM CC/SEC HE

Break, 10, 20, 30, 40KV Isolation, Kovar Tube Adapters, UHV Compatible

UNLESS OTHERWISE SPECIFIED:	QUOTATION #		N/A
DIMENSIONS ARE IN INCHES TOLERANCES:	NAME	DATE	MPF PRODUCTS INC.
ANGULAR: MACH $\pm 1/2^\circ$ TWO PLACE DECIMAL $\pm .030$ THREE PLACE DECIMAL $\pm .015$	DRAWN	9/11/2015	
	CHECKED	9/11/2015	
	ENG APPR.	9/11/2015	
MATERIAL	THIRD ANGLE:		TITLE: BREAK, 10, 20, 30, 40KV ISOLATION, KOVAR TUBE ADAPTERS
FINISH	APPLICATION		DWG. NO. A1988
PLATING	NEXT ASSY USED ON		
	SURFACE FINISH: $\sqrt{63}$ OR BETTER		REV
	UNLESS OTHERWISE SPECIFIED: ALL DIAMETERS CONCENTRIC WITHIN .005. REMOVE ALL BURRS AND SHARP EDGES		Thursday, November 14, 2019 8:48:50 AM