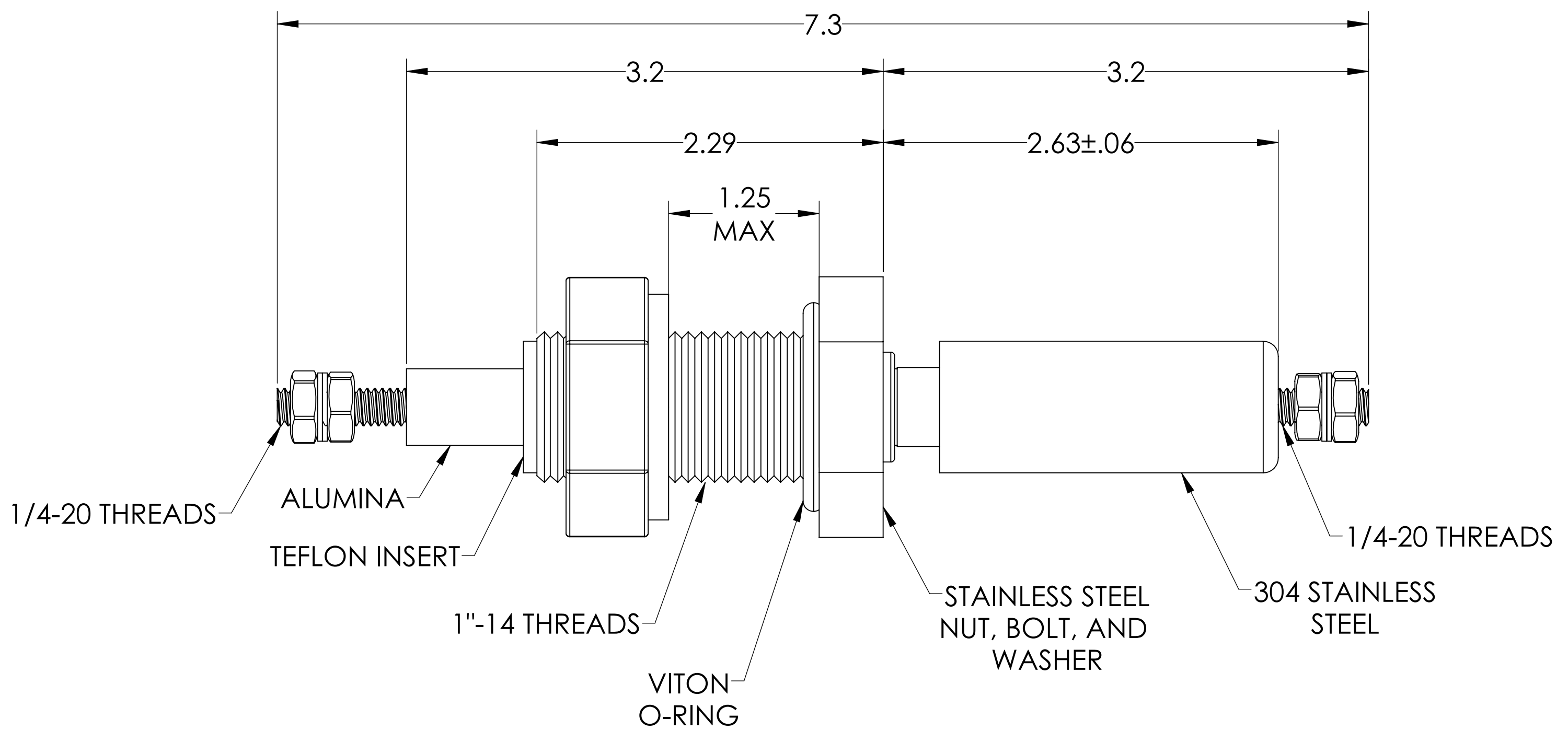
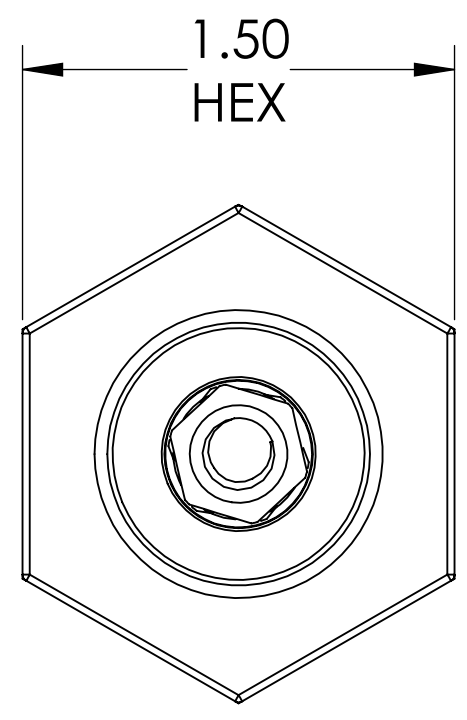
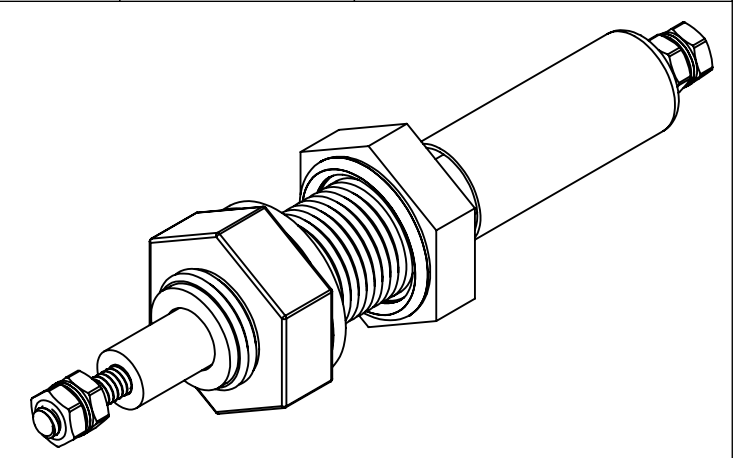


MPF PRODUCTS INC.



PART #	CONDUCTOR MATERIAL	CURRENT RATING
A0545-1-BP	OFHC COPPER	180 AMPS
A0545-2-BP	NICKEL 200	55 AMPS
A0545-3-BP	304 STN STL	7 AMPS

- NOTE:**
- VOLTAGE: 12,000 VOLTS DC
 - CURRENT: SEE TABLE
 - TEMPERATURE RATING: -100 TO 450°C

Power Feedthrough, 12 KV, 1 Pins, Deposition Shield, 1" Baseplate Bolt, UHV Rated, Bakeable to 450°C

UNLESS OTHERWISE SPECIFIED:		QUOTATION #		N/A	
DIMENSIONS ARE IN INCHES TOLERANCES:		NAME	DATE	MPF PRODUCTS INC.	
ANGULAR: MACH ± 1/2°		DRAWN	9/11/2015		
TWO PLACE DECIMAL ± .030		CHECKED	9/11/2015		
THREE PLACE DECIMAL ± .015		ENG APPR.	9/11/2015		
MATERIAL		THIRD ANGLE:		POWER FEEDTHROUGH, 12 KV, 1 PIN, SHIELD 1" BASEPLATE	
		APPLICATION			
		NEXT ASSY	USED ON		
FINISH		SURFACE FINISH: 63 OR BETTER		DOWNLOADED FROM MPFPI.COM	
PLATING		UNLESS OTHERWISE SPECIFIED:		DWG. NO. A0545 REV	
		ALL DIAMETERS CONCENTRIC WITHIN .005. REMOVE ALL BURRS AND SHARP EDGES		Tuesday, February 12, 2019 10:16:41 AM	