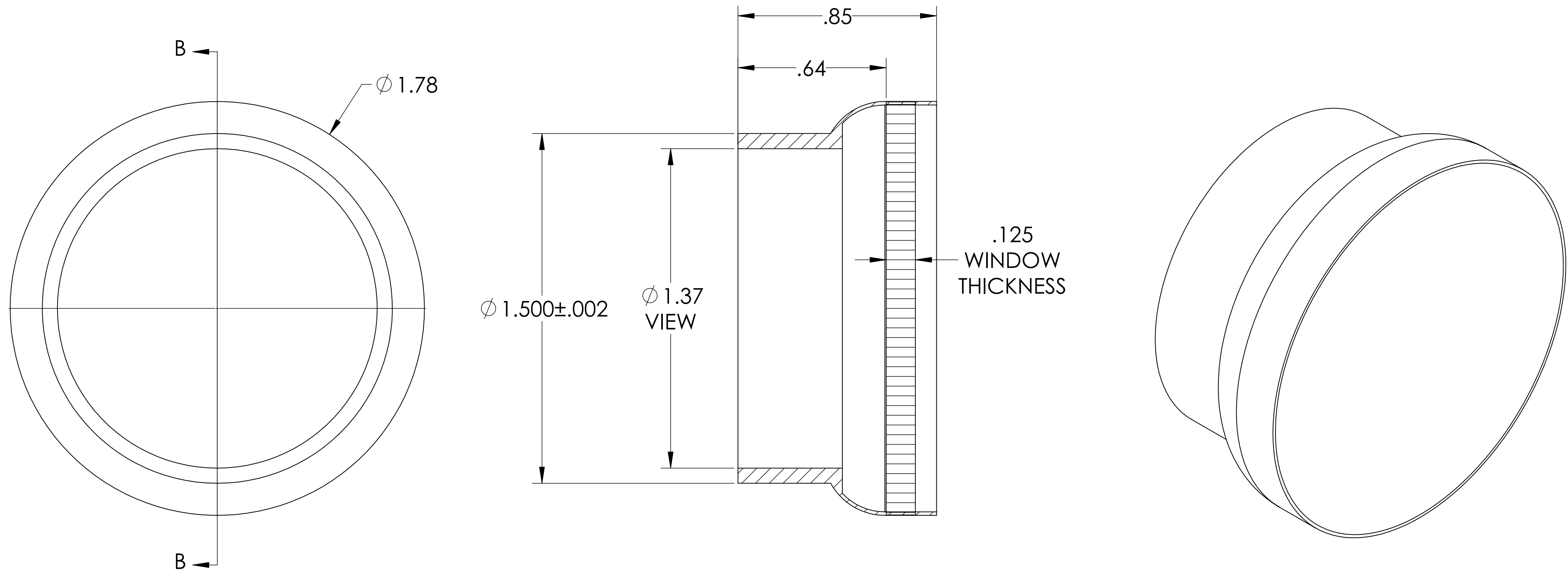


# MPF PRODUCTS INC.



**NOTES:**

1. MATERIAL: CORNING HPFS 7980 FUSED SILICA OR EQUIVALENT
2. TWD <  $\lambda/4$  @ 632NM (PEAK TO VALLEY)
3. PARALLELISM < 10 ARC SECONDS
4. SURFACE FINISH: 20/10 SCRATCH-DIG
5. THERMAL RANGE: -100 °C TO 200 °C
6. HOMOGENEITY GRADE: A
7. INCLUSION CLASS: 0
8. LEAK RATE < 1 X 10-9 ATM-CC/SEC HE

Laser Grade Fused Silica Viewport, 1.37" View Dia, 1.50" Dia Stainless Steel Weld Adapter

UNLESS OTHERWISE SPECIFIED:	QUOTATION #	N/A	APPROVED
DIMENSIONS ARE IN INCHES TOLERANCES:	DRAWN	WJ	9/11/2015
ANGULAR: MACH ± 1/2°	CHECKED		9/11/2015
TWO PLACE DECIMAL ± .030	ENG APPR.	WJ	9/11/2015
THREE PLACE DECIMAL ± .015	THIRD ANGLE:		
MATERIAL	APPLICATION	TITLE: VIEWPORT, FUSED SILICA, LASER GRADE, 1.4" VIEW, WELD ADAPTER	
SEE NOTES	NEXT ASSY	USED ON	DOWNLOADED FROM MPFPI.COM
FINISH	SURFACE FINISH:	63/ OR BETTER	DWG. NO.
WELDABLE	UNLESS OTHERWISE SPECIFIED:	ALL DIAMETERS CONCENTRIC WITHIN .005. REMOVE ALL BURRS AND SHARP EDGES	REV
PLATING			A0657-6-W
			Wednesday, October 14, 2020 10:58:54 AM