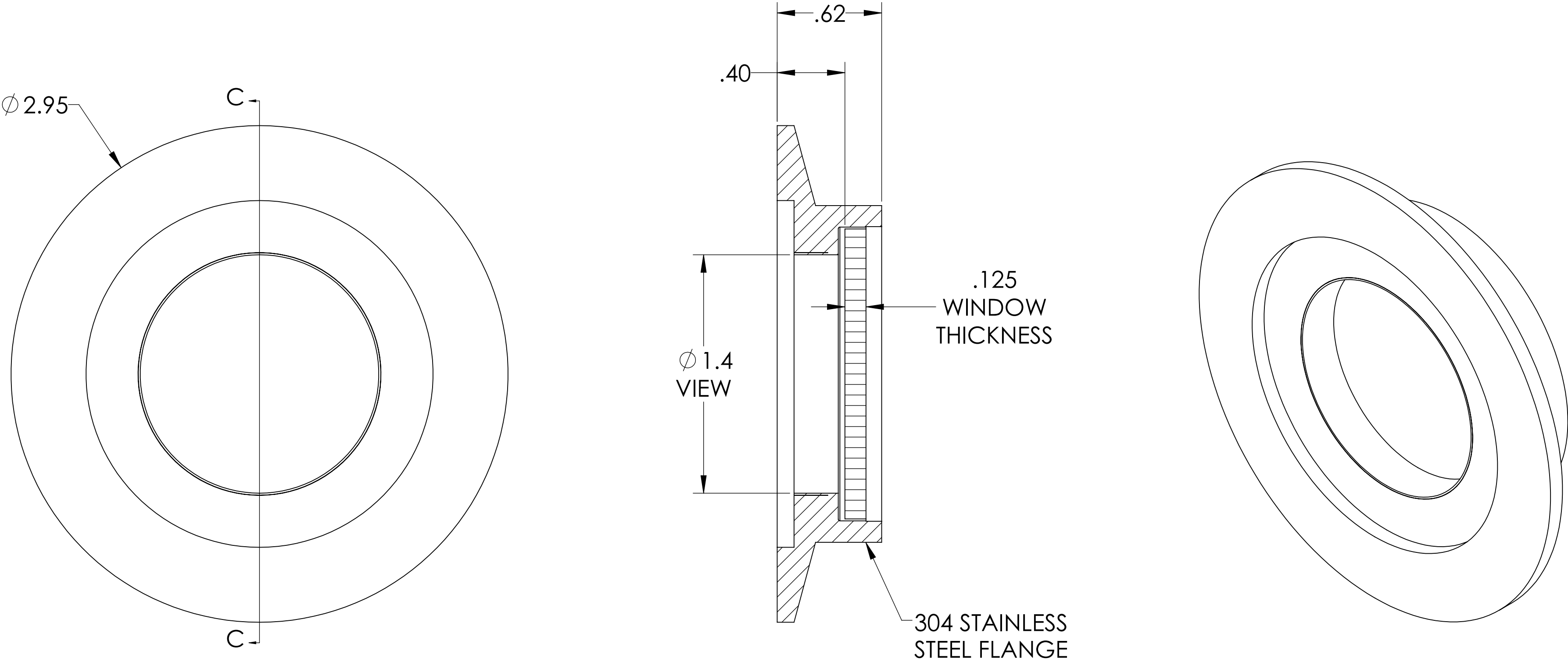


MPF PRODUCTS INC.



- SPECIFICATIONS:
- 1. MATERIAL: CORNING HPFS 7980 FUSED SILICA OR EQUIVALENT
  - 2. TWD <  $\lambda/4$  @ 632nm (PEAK TO VALLEY)
  - 3. PARALLELISM < 10 ARC SECONDS
  - 4. SURFACE FINISH: 20/10 SCRATCH-DIG
  - 5. THERMAL RANGE: -100°C TO 200°C
  - 6. HOMOGENEITY GRADE: A
  - 7. INCLUSION CLASS: 0
  - 8. LEAK RATE < 1 X 10<sup>-9</sup> ATM-CC/SEC HE

Laser Grade Fused Silica Viewport, 1.40" View Dia, 2.95" QF/KF

UNLESS OTHERWISE SPECIFIED:		QUOTATION #		N/A	
DIMENSIONS ARE IN INCHES TOLERANCES:  ANGULAR: MACH $\pm 1/2^\circ$ TWO PLACE DECIMAL $\pm .030$ THREE PLACE DECIMAL $\pm .015$  MATERIAL		DRAWN	WJ	DATE	9/11/2015
		CHECKED			9/11/2015
		ENG APPR.	WJ		9/11/2015
		THIRD ANGLE:			
FINISH		APPLICATION			
		NEXT ASSY		USED ON	
PLATING		SURFACE FINISH:		$\sqrt{63}$ OR BETTER	
		UNLESS OTHERWISE SPECIFIED:		ALL DIAMETERS CONCENTRIC WITHIN .005. REMOVE ALL BURRS AND SHARP EDGES	
		TITLE:		VIEWPORT, FUSED SILICA, LASER GRADE, 1.4 VIEW, QF/KF 50	
		DWG. NO.		A0816-2-QF	
		REV			
		DOWNLOADED FROM MPFPI.COM		Wednesday, October 14, 2020 10:59:41 AM	