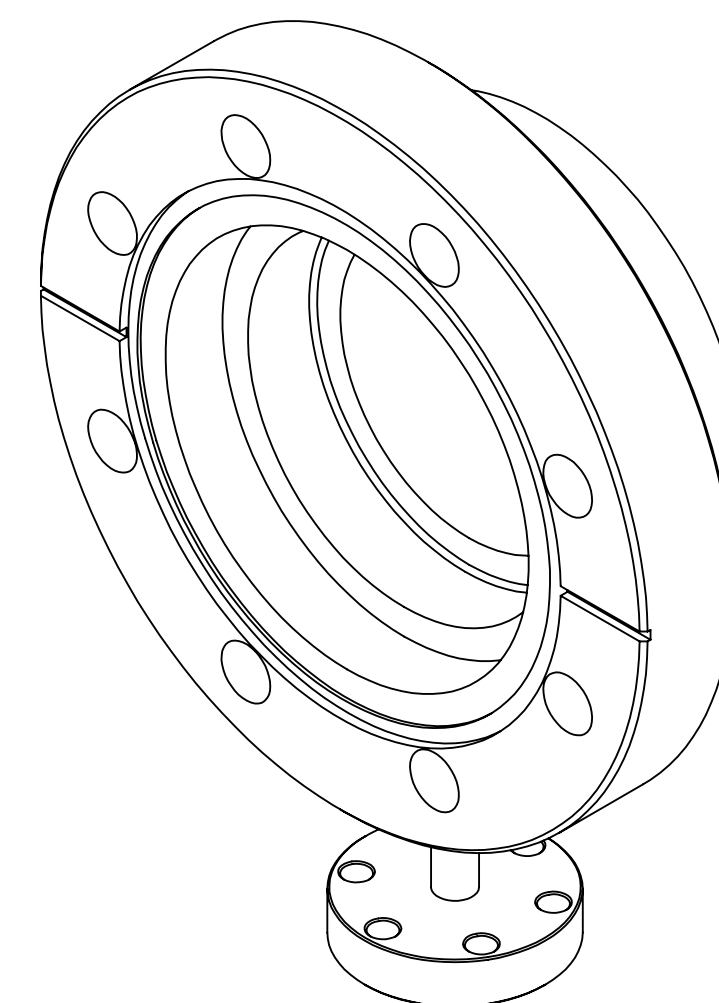
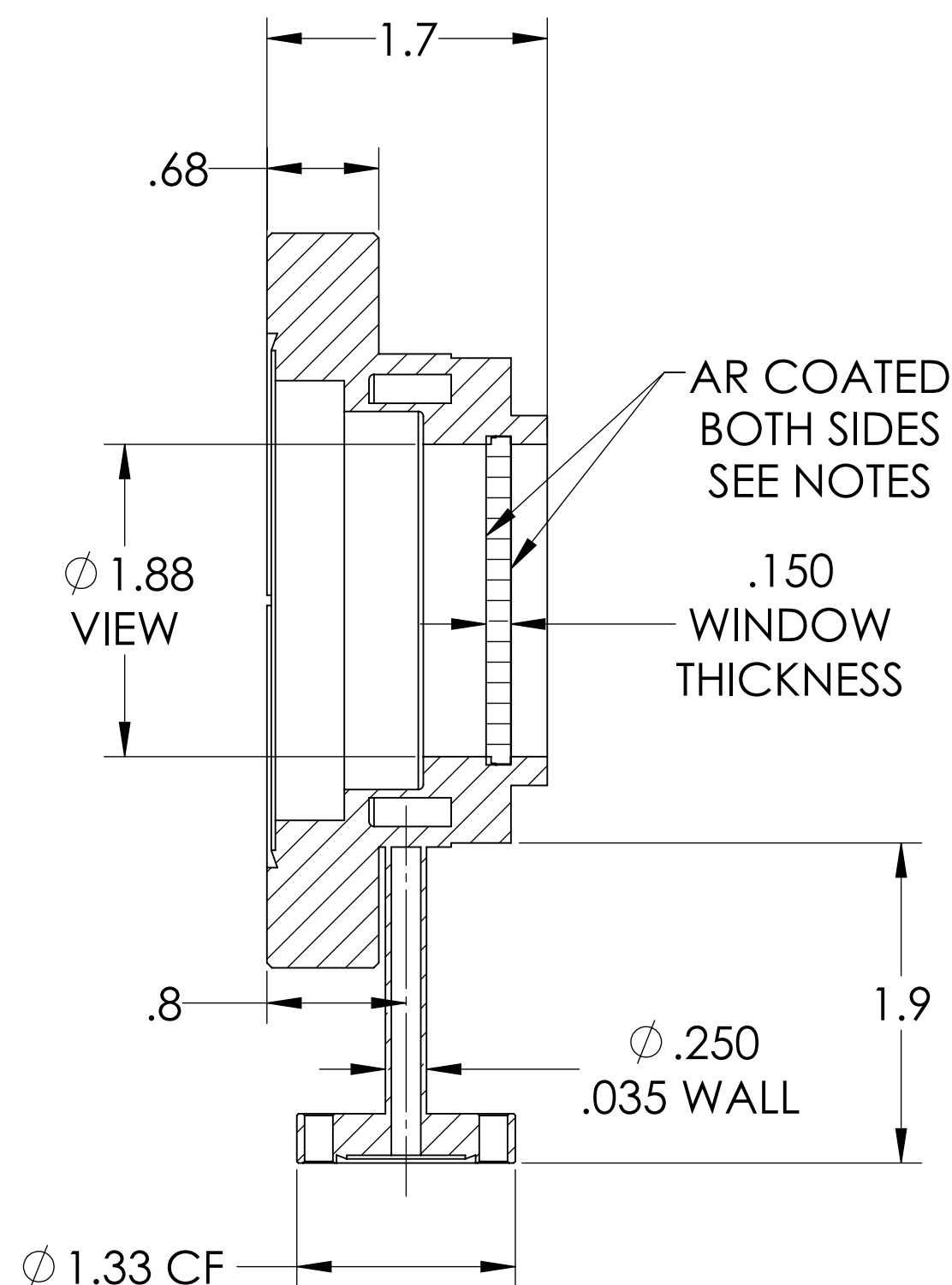
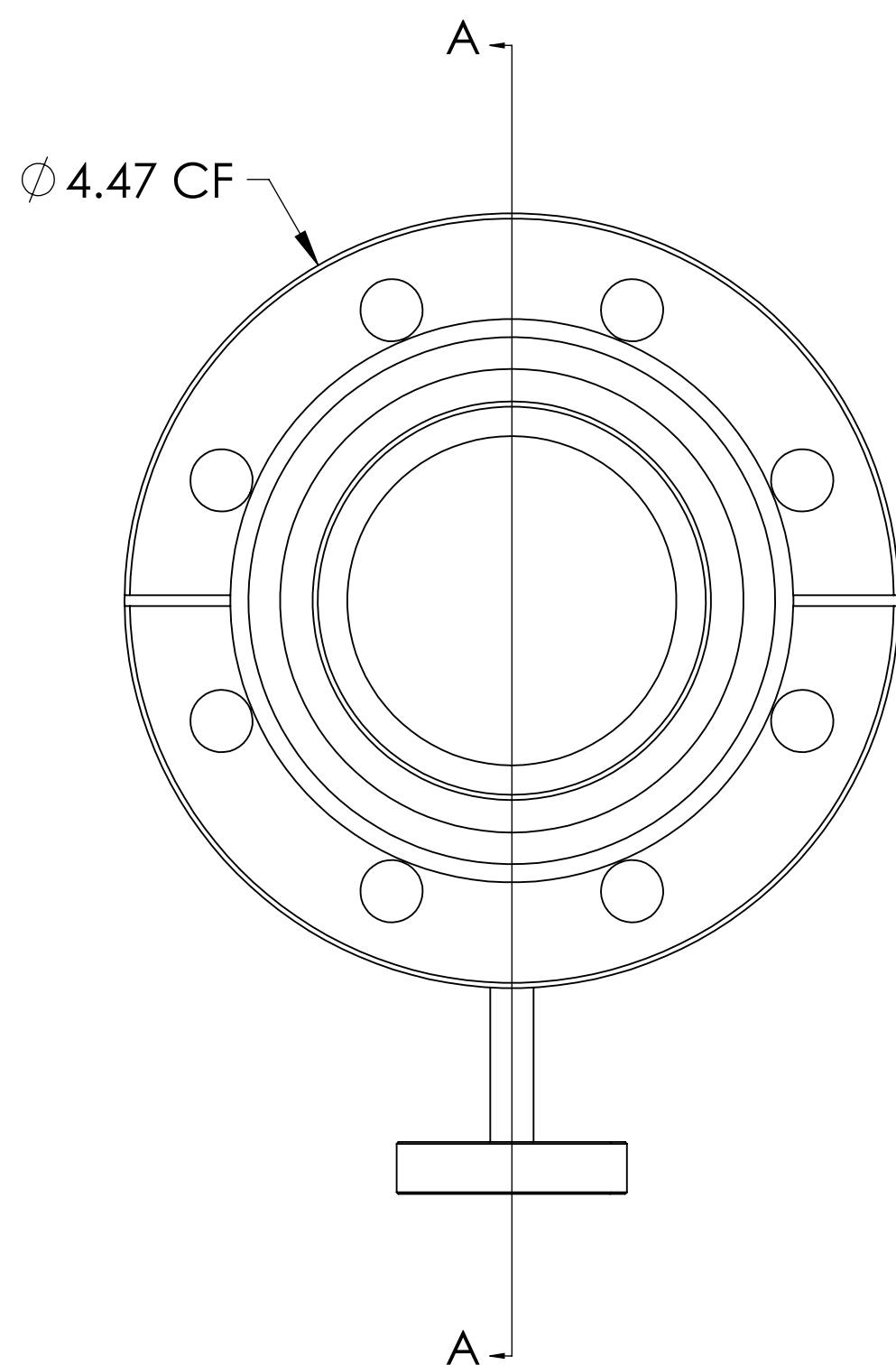


MPF PRODUCTS INC.



SPECIFICATIONS:

1. MATERIAL: ZINC SULFIDE (CLEARTRAN)
2. TWD < $\lambda/4$ @ 632NM (PEAK TO VALLEY)
3. PARALLELISM < 3 ARC MINUTES
4. SURFACE FINISH: 40/20 SCRATCH-DIG
5. BBAR COATED BOTH SIDES 8-12 MICRONS
6. THERMAL RANGE: -100°C TO 200°C
7. LEAK RATE < 8 X 10⁻¹⁰ ATM-CC/SEC HE

Cleartran (ZnS) Viewport w/ AR Coating for 8-12 microns, Differentially Pumped, 1.88" View Dia, 4.50" Conflat Flange, 133 CF Fitting

UNLESS OTHERWISE SPECIFIED:		QUOTATION #		N/A	
DIMENSIONS ARE IN INCHES TOLERANCES:		DRAWN	WJ	DATE	9/11/2015
ANGULAR: MACH ± 1/2°		CHECKED		DATE	9/11/2015
TWO PLACE DECIMAL ± .030		ENG APPR.	WJ	DATE	9/11/2015
THREE PLACE DECIMAL ± .015		THIRD ANGLE:			
MATERIAL					
FINISH		APPLICATION			
PLATING		NEXT ASSY USED ON			
SURFACE FINISH: 40/20 OR BETTER		TITLE:			
UNLESS OTHERWISE SPECIFIED:		VIEWPORT, ZNS, DIFF PUMPED AR 8-12 MICRON, 2" VIEW, 450CF MOUNT, 1.33 CF FITTING			
ALL DIAMETERS CONCENTRIC WITHIN .005. REMOVE ALL BURRS AND SHARP EDGES		DWG. NO. A4523-3-CF			
		REV.			
		DOWNLOADED FROM MPFPI.COM			
		Wednesday, October 14, 2020 11:03:45 AM			