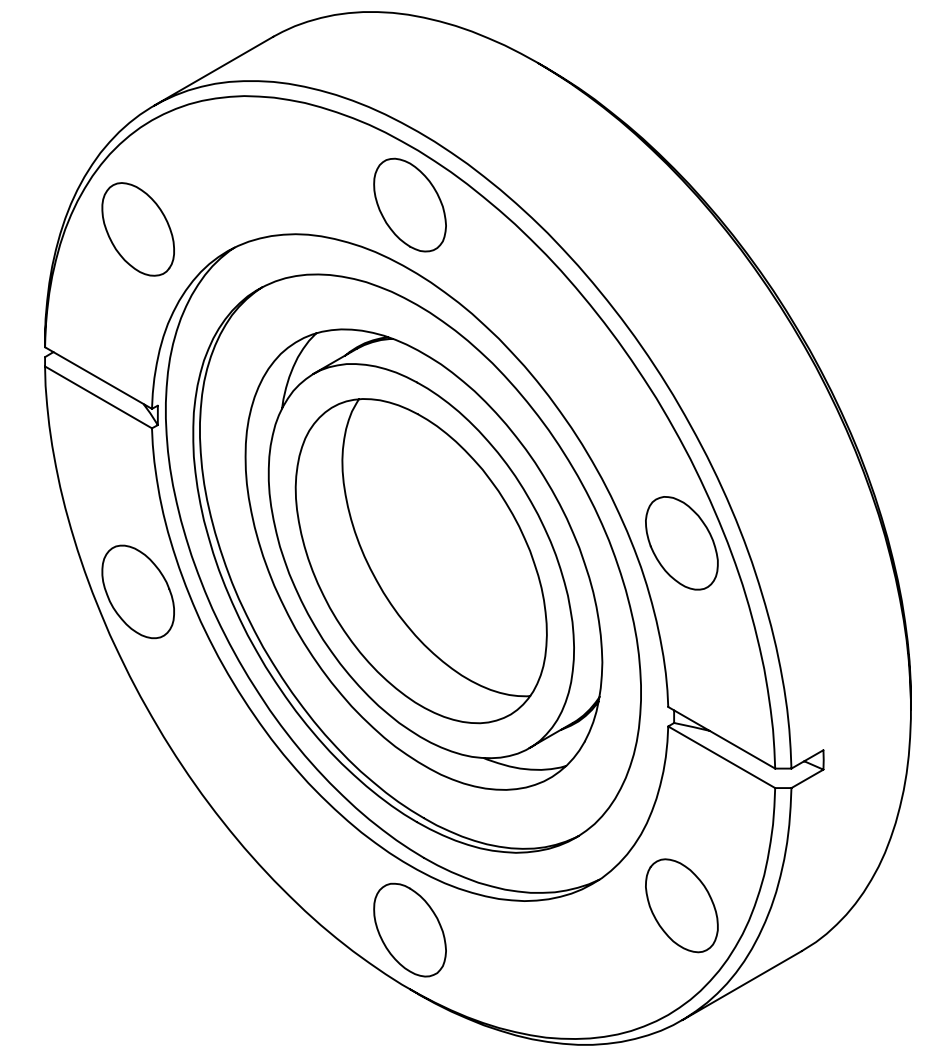
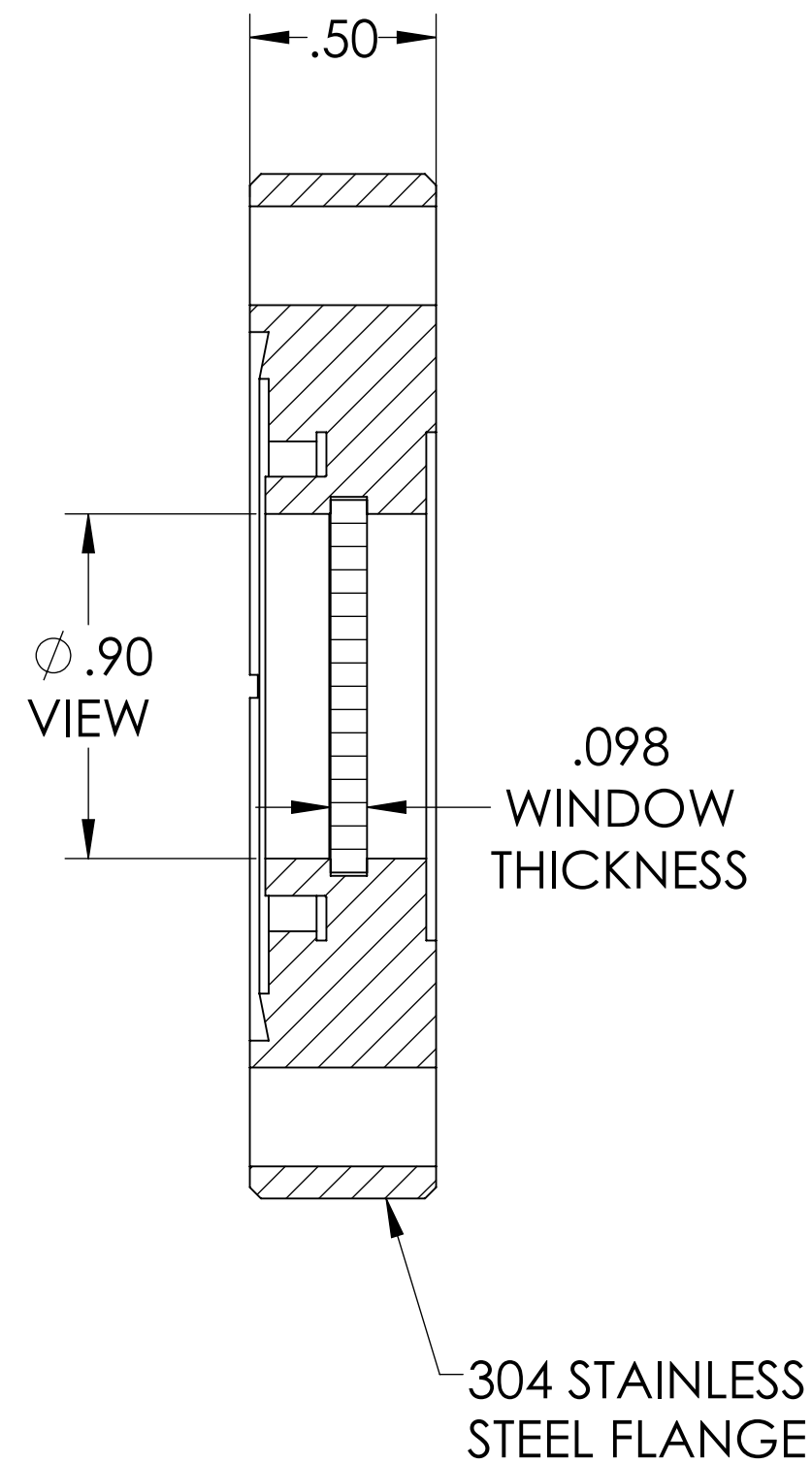
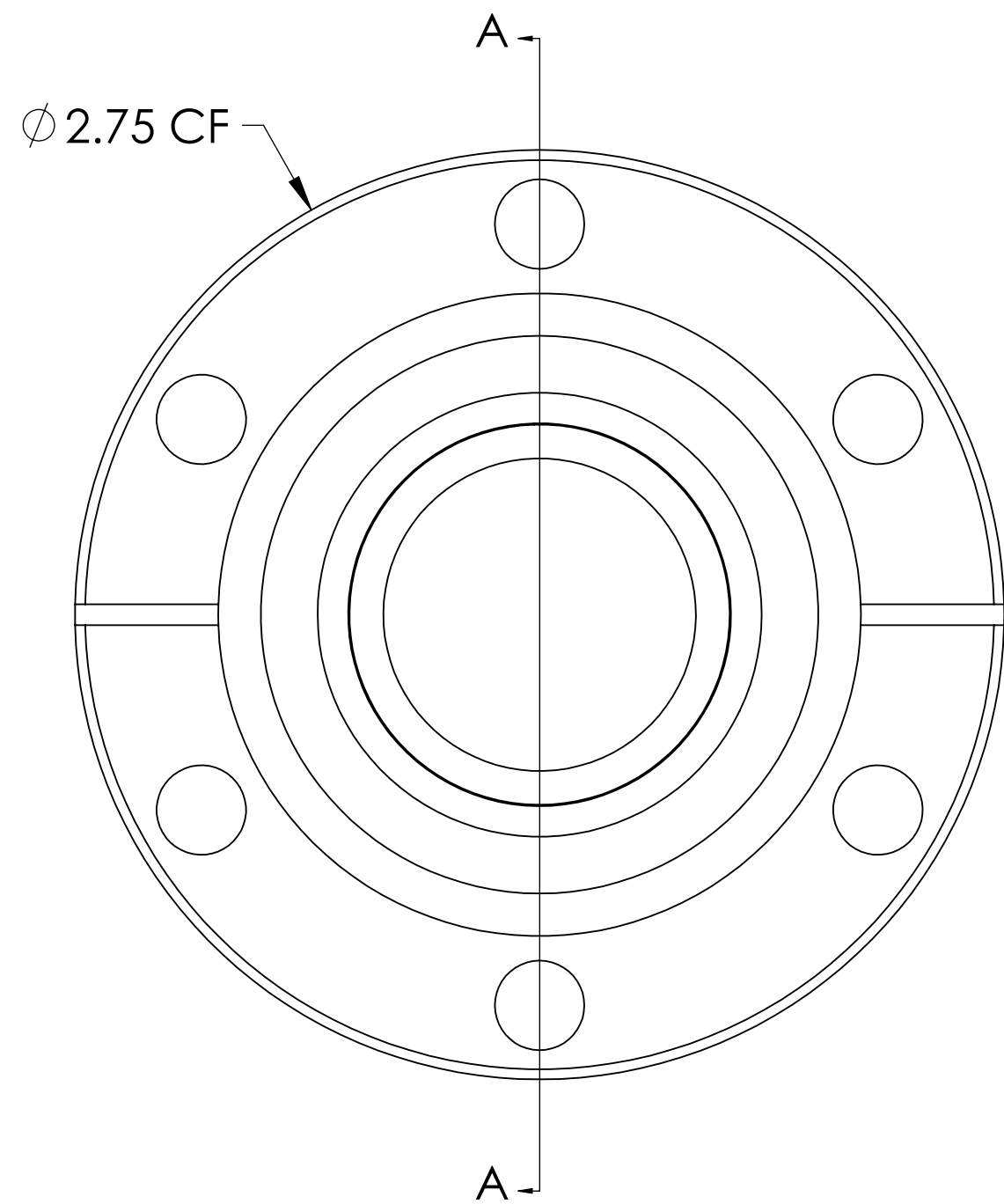


MPF PRODUCTS INC.



SPECIFICATIONS:

1. MATERIAL: SINGLE CRYSTAL, 0° MAGNESIUM FLUORIDE
2. FLATNESS <math>< \lambda/4 @ 632\text{NM}</math> (PEAK TO VALLEY)
3. PARALLELISM <math>< 3</math> ARC MINUTES
4. SURFACE FINISH: 20/10 SCRATCH-DIG
5. THERMAL RANGE: -100°C TO 200°C
6. LEAK RATE <math>< 1 \times 10^{-9}</math> ATM-CC/SEC HE

Magnesium Fluoride (MgF2) Viewport, UHV Rated Vacuum Optics, 0.90" View Dia, 2.75" Conflat Flange

UNLESS OTHERWISE SPECIFIED:		QUOTATION #		N/A	
DIMENSIONS ARE IN INCHES		NAME	DATE	MPF PRODUCTS INC.	
TOLERANCES:		DRAWN	9/11/2015		
ANGULAR: MACH ± 1/2°		CHECKED	9/11/2015		
TWO PLACE DECIMAL ± .030		ENG APPR.	9/11/2015		
THREE PLACE DECIMAL ± .015		THIRD ANGLE:		VIEWPORT, MGF2 VACUUM OPTICS, 1" VIEW, 275CF	
MATERIAL					
FINISH		APPLICATION			
PLATING		NEXT ASSY	USED ON	DOWNLOADED FROM MPFPI.COM	
		SURFACE FINISH: 63 OR BETTER		DWG. NO. A4530-1-CF	
		UNLESS OTHERWISE SPECIFIED:		REV.	
		ALL DIAMETERS CONCENTRIC WITHIN .005. REMOVE ALL BURRS AND SHARP EDGES		Wednesday, October 14, 2020 11:09:50 AM	