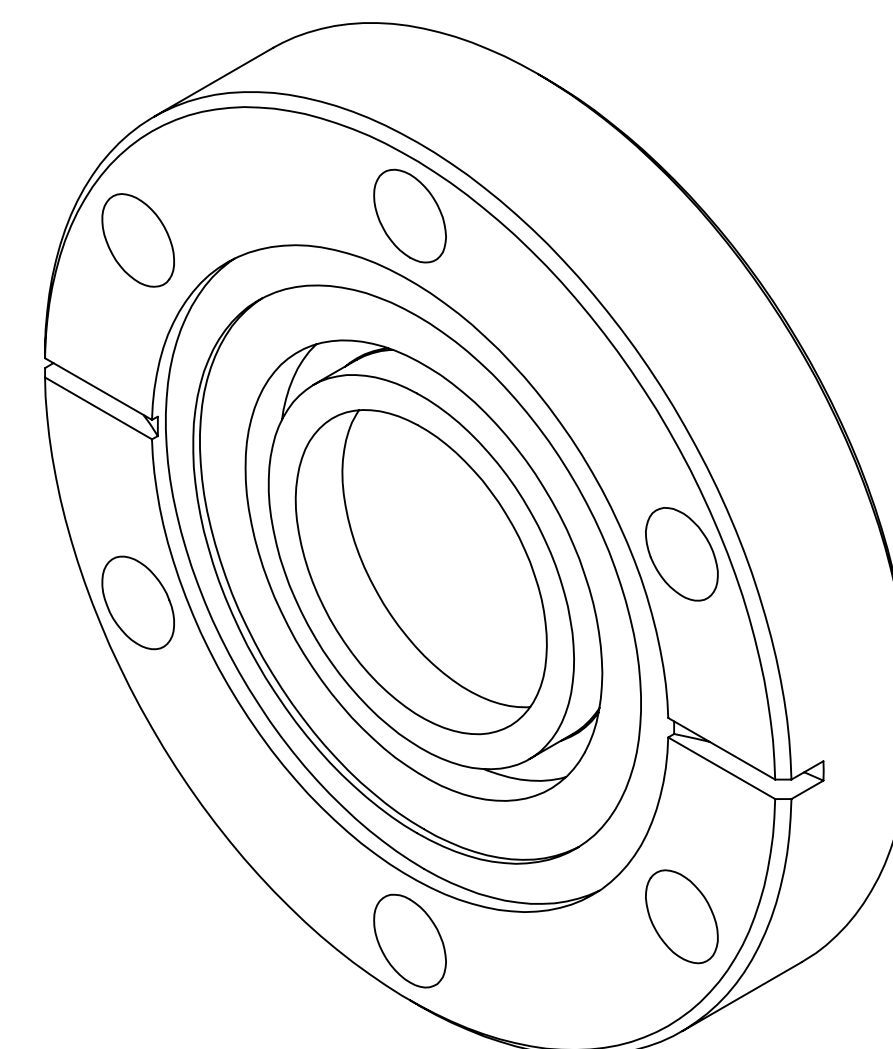
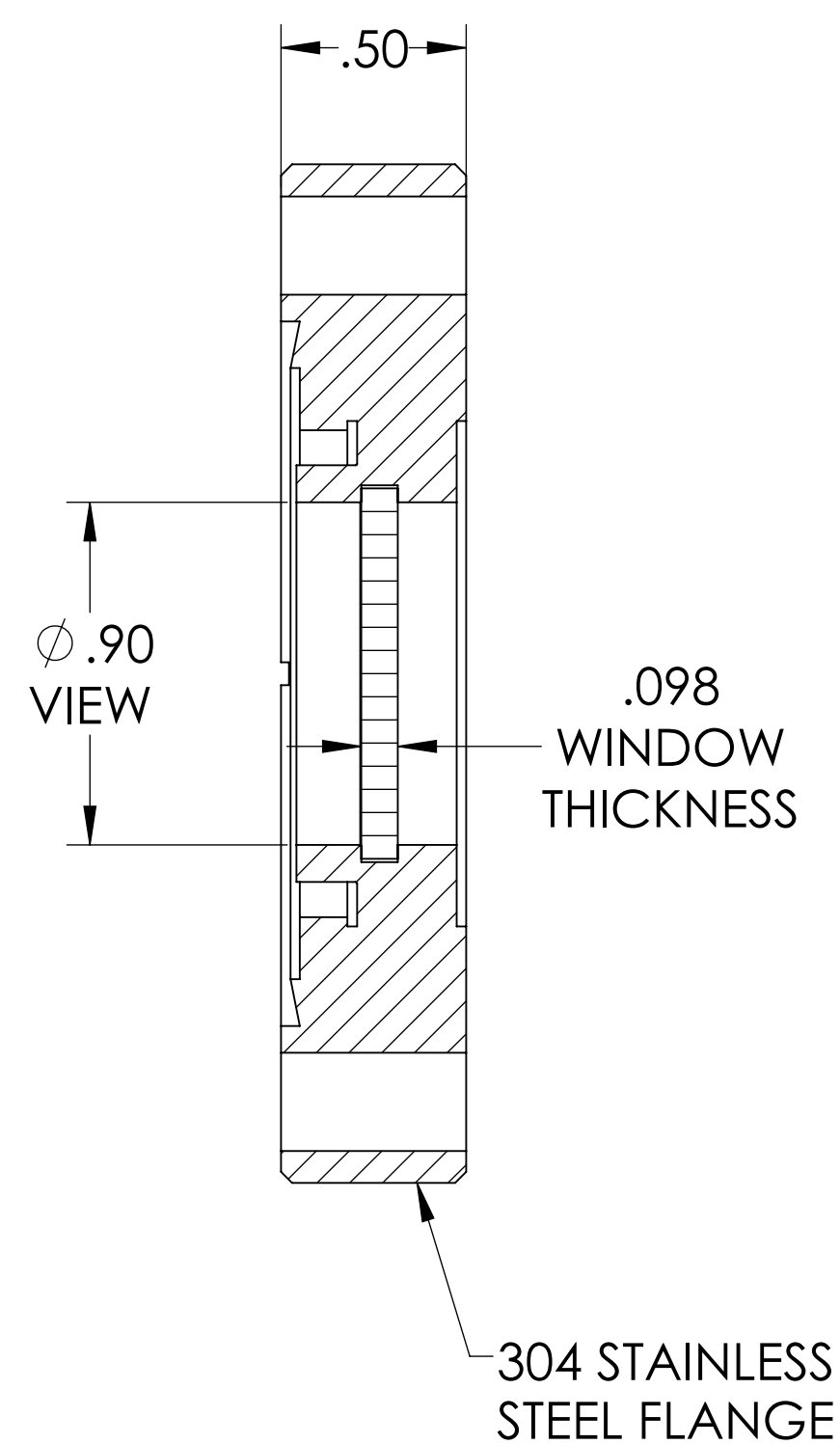
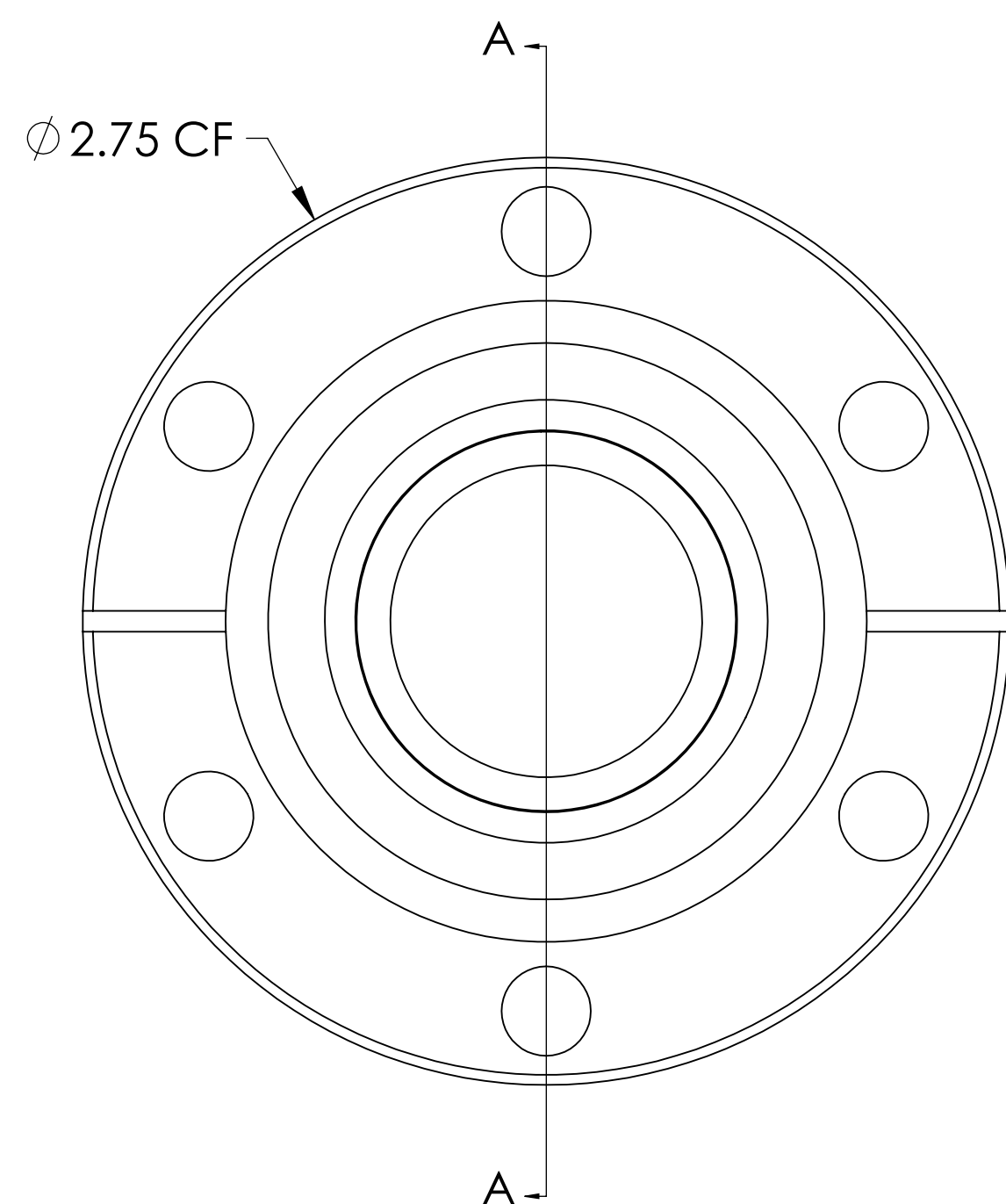


MPF PRODUCTS INC.



SPECIFICATIONS:

1. MATERIAL: SINGLE CRYSTAL, CALCIUM FLUORIDE
2. FLATNESS $< \lambda/4$ @ 632NM (PEAK TO VALLEY)
3. PARALLELISM < 3 ARC MINUTES
4. SURFACE FINISH: 20/10 SCRATCH-DIG
5. THERMAL RANGE: -100°C TO 200°C
6. LEAK RATE $< 1 \times 10^{-9}$ ATM-CC/SEC HE

Calcium Fluoride (CaF₂) Viewport, UHV Rated Vacuum-Optics, 0.90" View Dia, 2.75" Conflat Flange

UNLESS OTHERWISE SPECIFIED:	QUOTATION #	N/A	
DIMENSIONS ARE IN INCHES TOLERANCES:	DRAWN	NAME	DATE
ANGULAR: MACH $\pm 1/2^{\circ}$	WJ	WJ	9/11/2015
TWO PLACE DECIMAL $\pm .030$	CHECKED		9/11/2015
THREE PLACE DECIMAL $\pm .015$	ENG APPR.	WJ	9/11/2015
MATERIAL	THIRD ANGLE:		
FINISH	APPLICATION		
PLATING	NEXT ASSY	USED ON	
	SURFACE FINISH:	63	OR BETTER
	UNLESS OTHERWISE SPECIFIED:	ALL DIAMETERS CONCENTRIC WITHIN .005. REMOVE ALL BURRS AND SHARP EDGES	
	TITLE:		VIEWPORT, CAF2 VACUUM OPTICS, 1" VIEW, 275CF
	DWG. NO.		A4531-1-CF
	REV		
	DOWNLOADED FROM MPFPI.COM		
	Wednesday, October 14, 2020 11:09:29 AM		