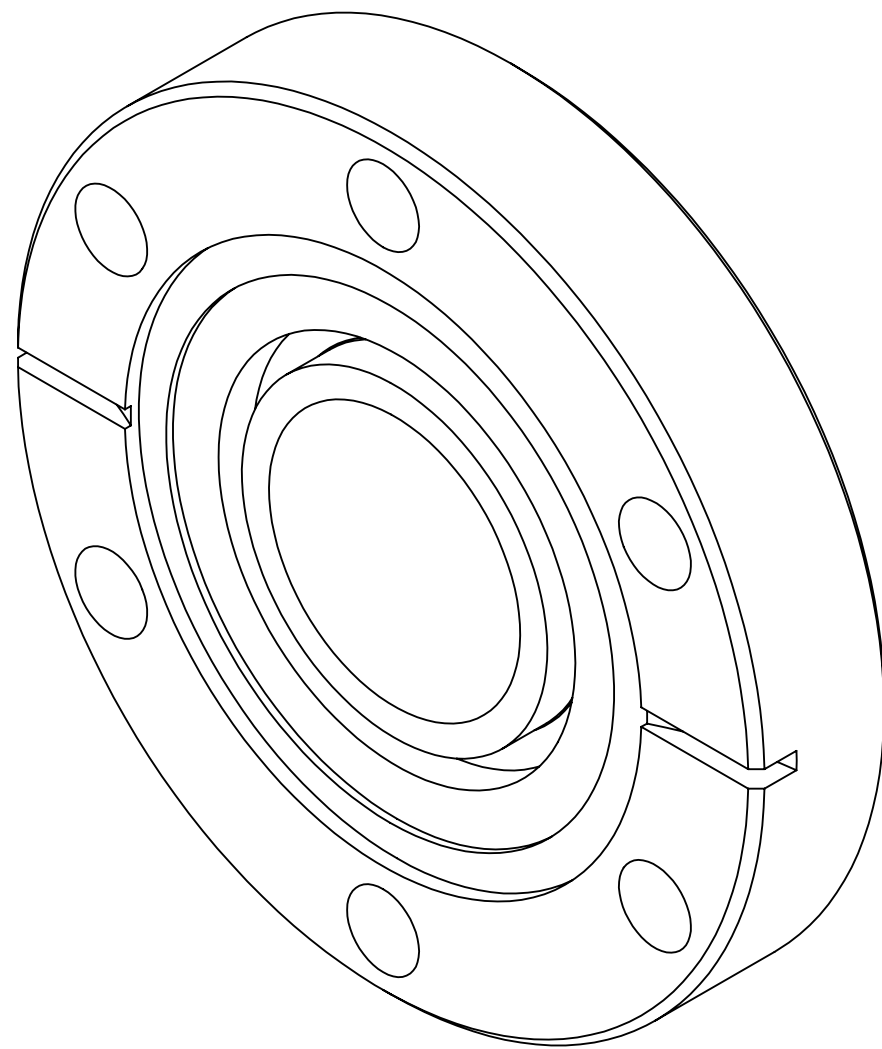
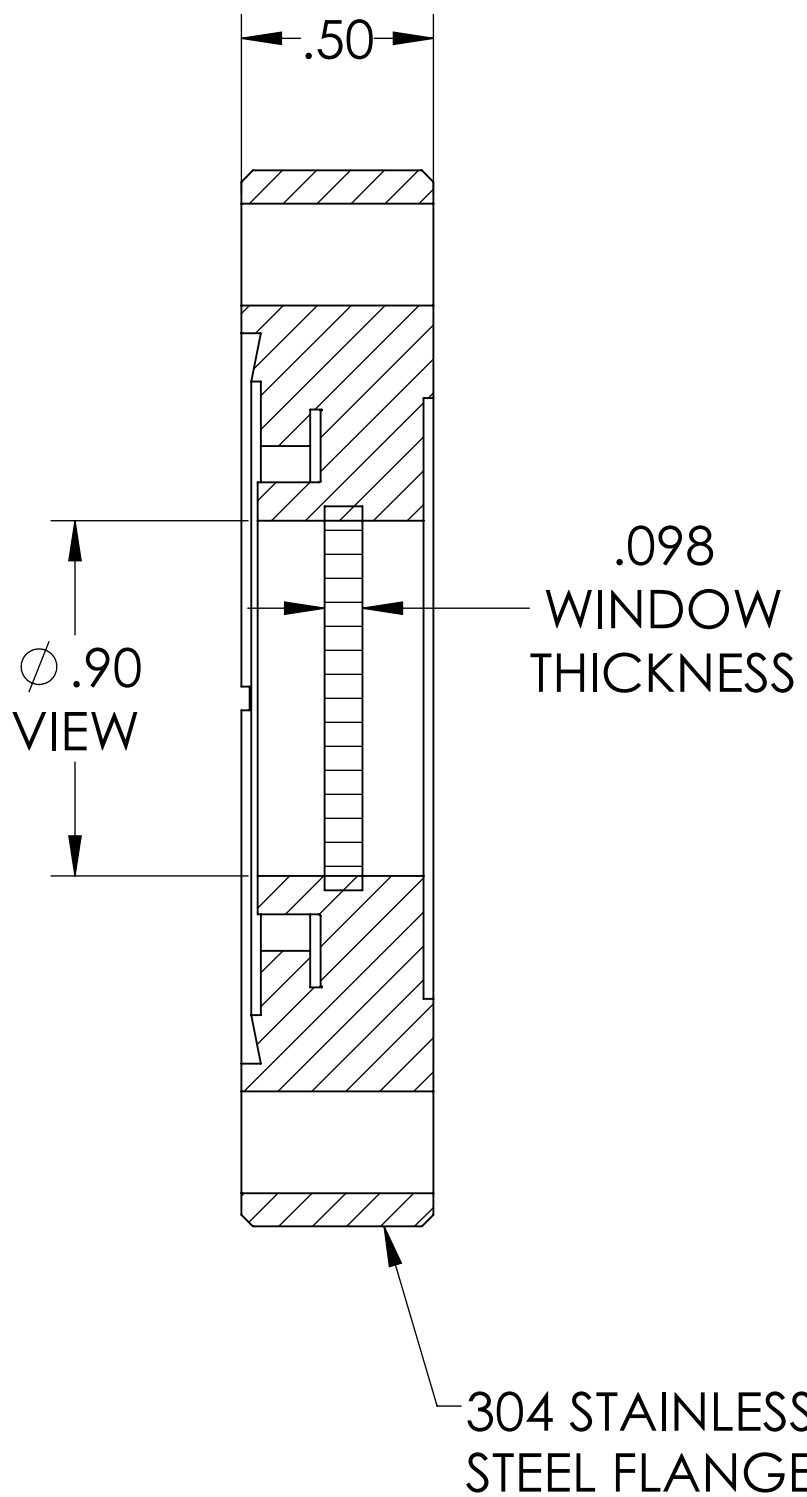
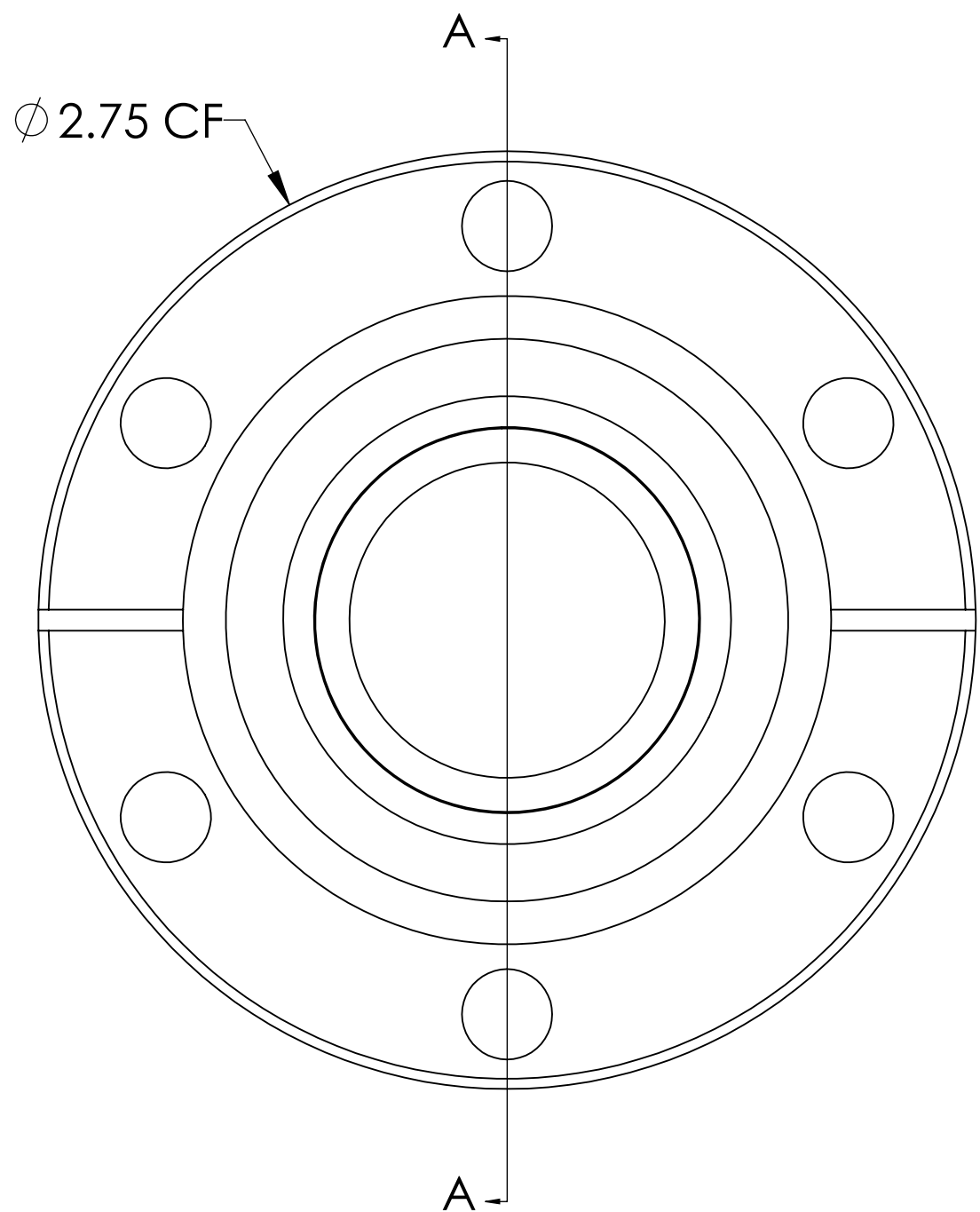
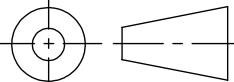



MPF PRODUCTS INC.



- SPECIFICATIONS:
- 1. MATERIAL: ZINC SELENIDE
 - 2. TWD < 1λ @ 632NM (PEAK TO VALLEY)
 - 3. PARALLELISM < 3 ARC MINUTES
 - 4. SURFACE FINISH: 40/20 SCRATCH-DIG
 - 5. THERMAL RANGE: -100°C TO 200°C
 - 6. LEAK RATE < 1 X 10-9 ATM-CC/SEC HE

Zinc Selenide (ZnSe) Viewport w/ BBAR Coating Both Sides for 8-12 microns, UHV Rated Vacuum-Optics, 0.90" View Dia, 2.75" Conflat Flange

UNLESS OTHERWISE SPECIFIED:		QUOTATION #		N/A	
DIMENSIONS ARE IN INCHES TOLERANCES: ANGULAR: MACH ± 1/2° TWO PLACE DECIMAL ± .030 THREE PLACE DECIMAL ± .015			NAME	DATE	MPF PRODUCTS INC.
		DRAWN	WJ	9/11/2015	
		CHECKED		9/11/2015	
		ENG APPR.	WJ	9/11/2015	
MATERIAL		THIRD ANGLE:			TITLE: VIEWPORT, ZNSE VACUUM OPTICS, 1" VIEW, 275CF
					
		APPLICATION			
		NEXT ASSY USED ON			
FINISH		SURFACE FINISH:  63 OR BETTER		DOWNLOADED FROM MPFPI.COM	
PLATING		UNLESS OTHERWISE SPECIFIED: ALL DIAMETERS CONCENTRIC WITHIN .005. REMOVE ALL BURRS AND SHARP EDGES		DWG. NO. REV	
				A4539-1-CF	
Wednesday, October 14, 2020 11:09:07 AM					