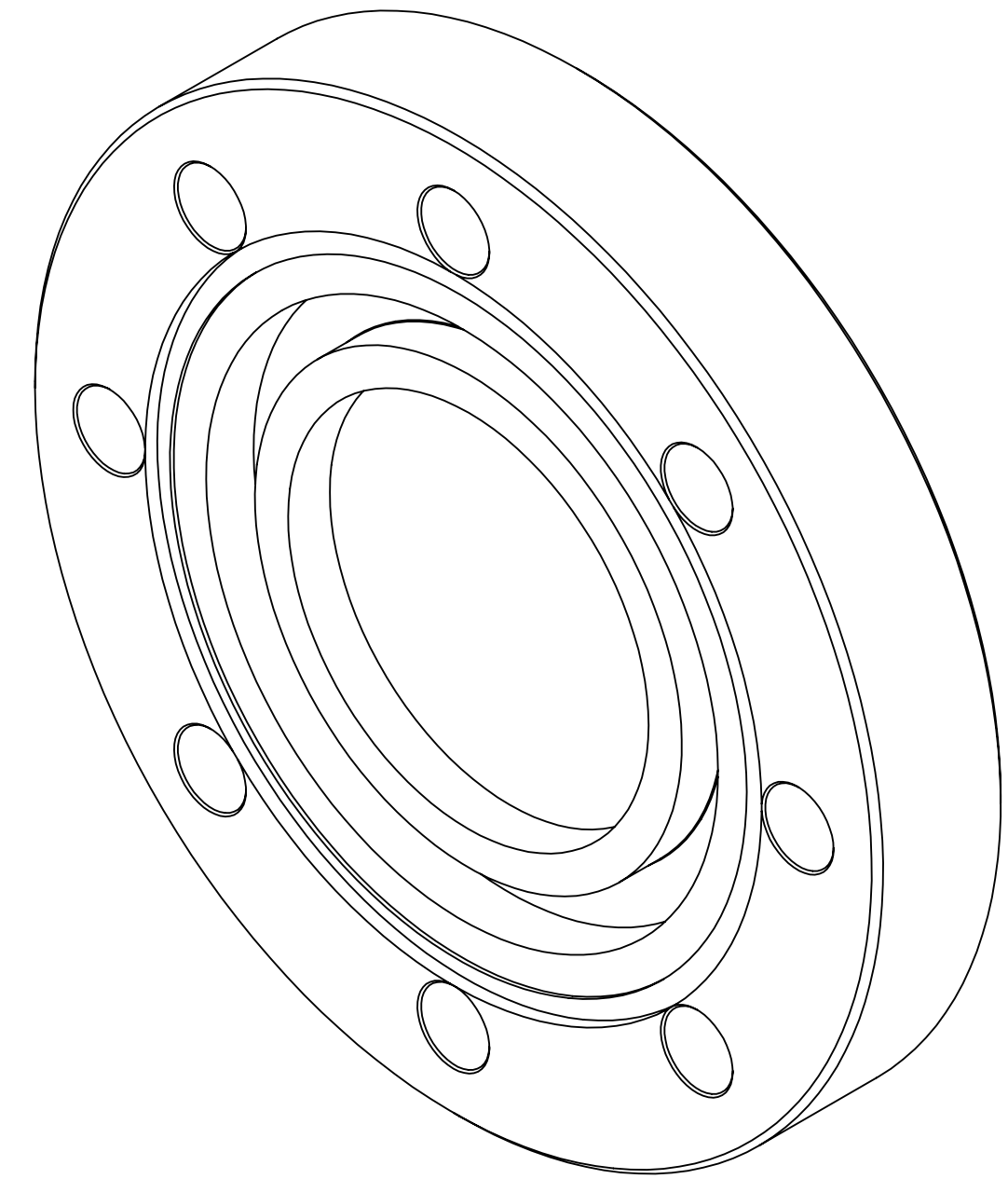
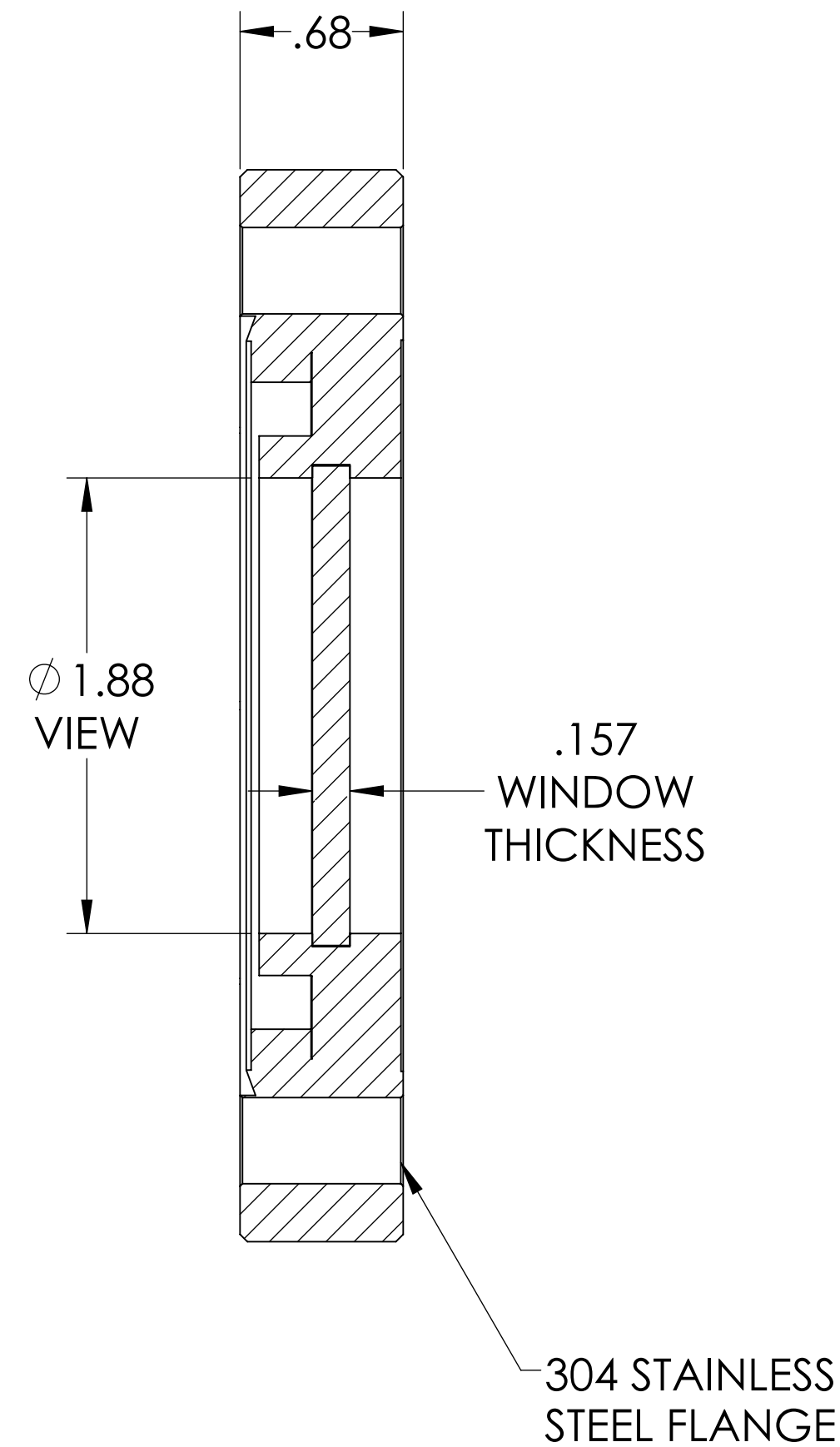
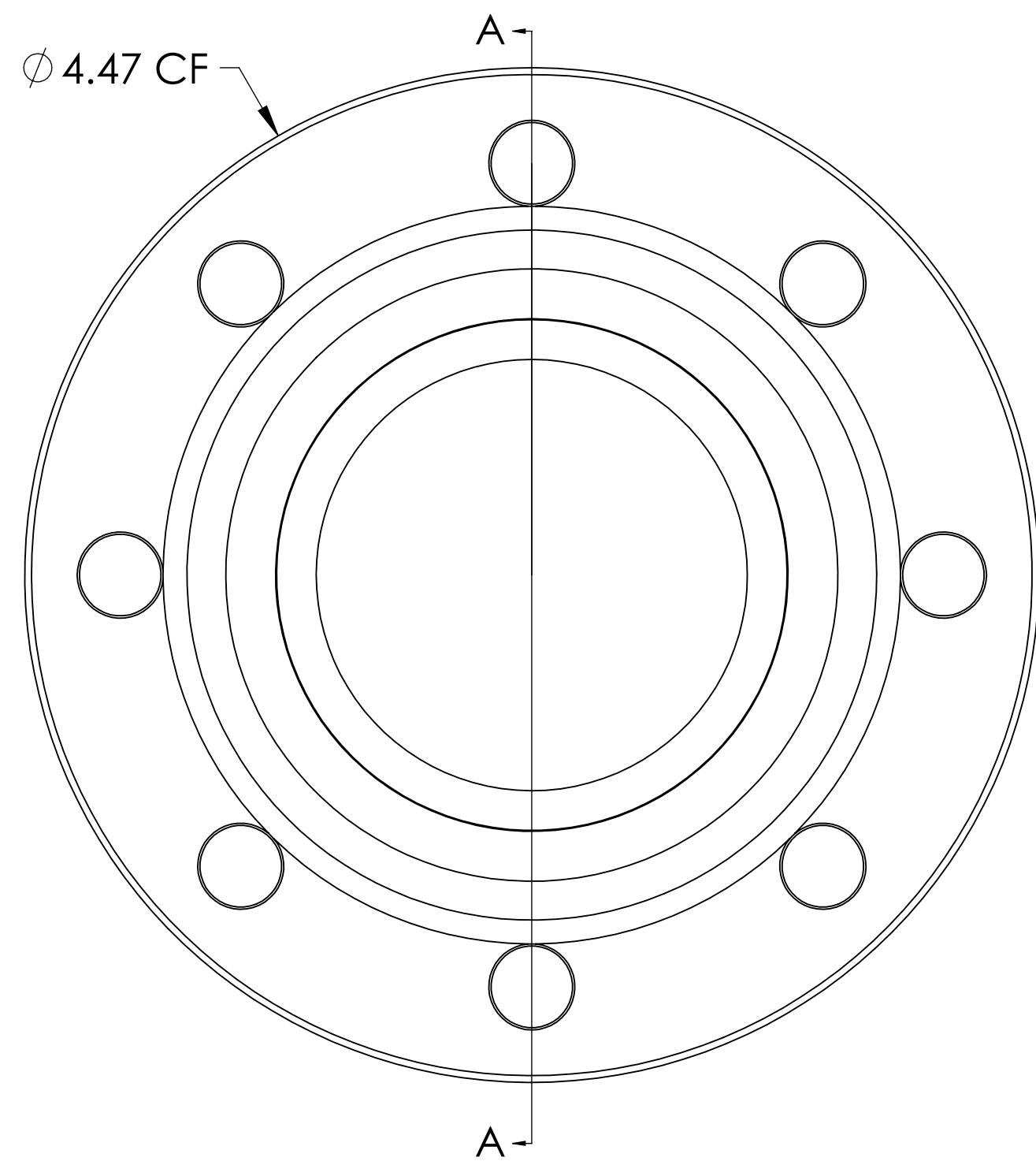


MPF PRODUCTS INC.



SPECIFICATIONS:

1. MATERIAL: GERMANIUM (GE)
2. TWD <math>< 1\lambda @ 632\text{NM}</math> (PEAK TO VALLEY)
3. PARALLELISM <math>< 3</math> ARC MINUTES
4. SURFACE FINISH: 40/20 SCRATCH-DIG
5. THERMAL RANGE: -100 °C TO 200 °C
6. LEAK RATE <math>< 1 \times 10^{-9}</math> ATM-CC/SEC HE

Germanium (Ge) Viewport, UHV Rated Vacuum-Optics, 1.88" View Dia, 4.50" Conflat Flange

UNLESS OTHERWISE SPECIFIED:		QUOTATION #		N/A	
DIMENSIONS ARE IN INCHES		DRAWN	NAME	DATE	MPF PRODUCTS INC.
TOLERANCES:		WJ	WJ	9/11/2015	
ANGULAR: MACH ± 1/2°		CHECKED		9/11/2015	
TWO PLACE DECIMAL ± .030		ENG APPR.	WJ	9/11/2015	
THREE PLACE DECIMAL ± .015		THIRD ANGLE:			VIEWPORT, GE VACUUM OPTICS, 2" VIEW, 450CF
MATERIAL					
FINISH		APPLICATION			
PLATING		NEXT ASSY	USED ON	DOWNLOADED FROM MPFPI.COM	
SURFACE FINISH: 40/20 OR BETTER		UNLESS OTHERWISE SPECIFIED:		DWG. NO.	REV
ALL DIAMETERS CONCENTRIC WITHIN .005. REMOVE ALL BURRS AND SHARP EDGES		A4966-1-CF		Friday, October 16, 2020 11:12:21 AM	