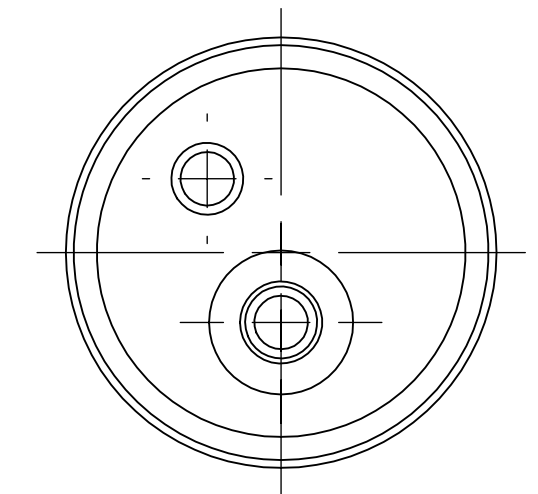
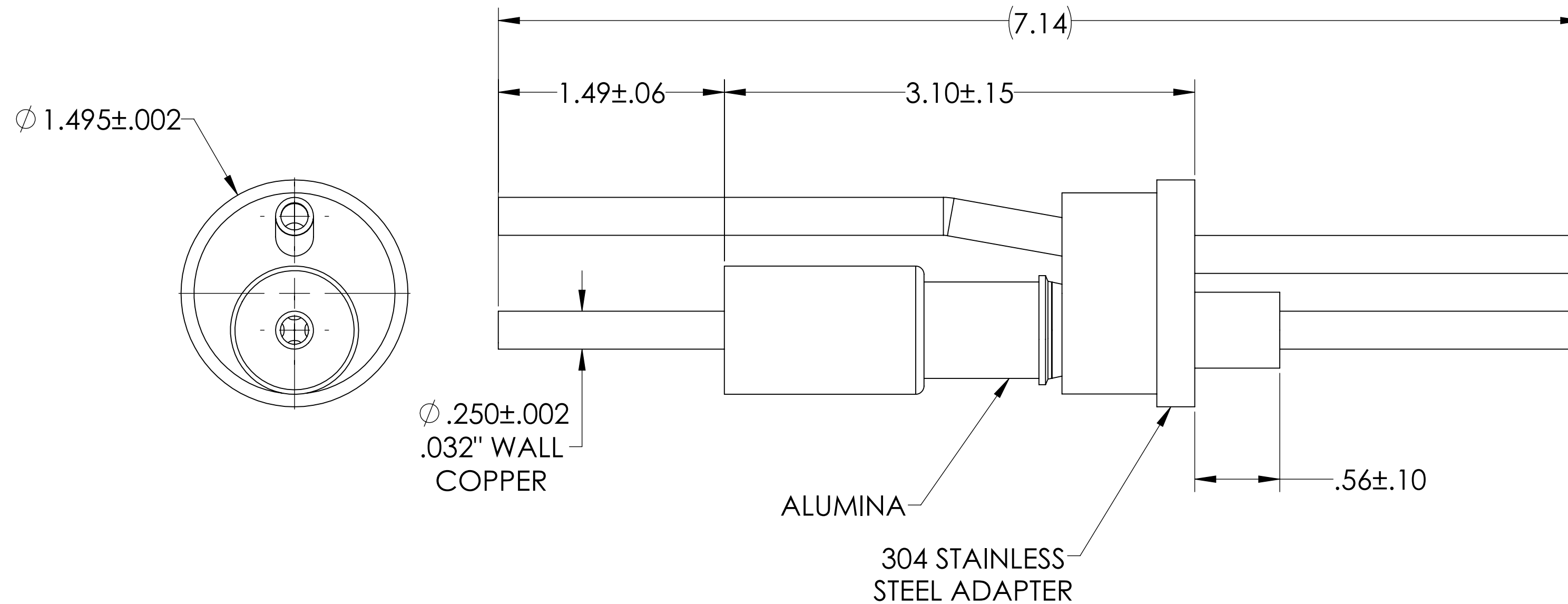
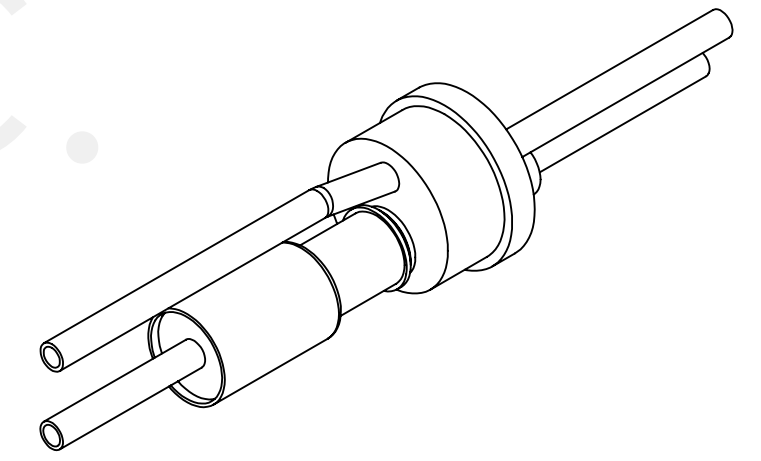


MPF PRODUCTS INC.



NOTE:

1. VOLTAGE: 10,000 VOLTS DC
2. CURRENT: N/A
3. TEMPERATURE RATING: -100 TO 450°C

RF Power Feedthrough, 10000 Volts, 20 KW @ 13.5 MHz, 2 Tubes, 0.25" Copper Conductor, 1.495" Stainless Steel Weld Adapter, UHV Rated, Bakeable to 450°C

UNLESS OTHERWISE SPECIFIED:	QUOTATION #		N/A
DIMENSIONS ARE IN INCHES TOLERANCES:	NAME	DATE	MPF PRODUCTS INC.
ANGULAR: MACH $\pm 1/2^\circ$	DRAWN	9/11/2015	
TWO PLACE DECIMAL $\pm .030$	CHECKED	9/11/2015	
THREE PLACE DECIMAL $\pm .015$	ENG APPR.	9/11/2015	
MATERIAL	THIRD ANGLE:		TITLE: RF POWER FEEDTHROUGH, 10 KV, 20 KW, 2 TUBES, 1.495" STAINLESS STEEL ADAPTER DOWNLOADED FROM MPFPI.COM
	APPLICATION		
FINISH	SURFACE FINISH:	$\sqrt{63}$ OR BETTER	DWG. NO.
PLATING	UNLESS OTHERWISE SPECIFIED:	ALL DIAMETERS CONCENTRIC WITHIN .005. REMOVE ALL BURRS AND SHARP EDGES	REV.
			A1723-1-W
			Wednesday, June 30, 2021 2:47:43 PM