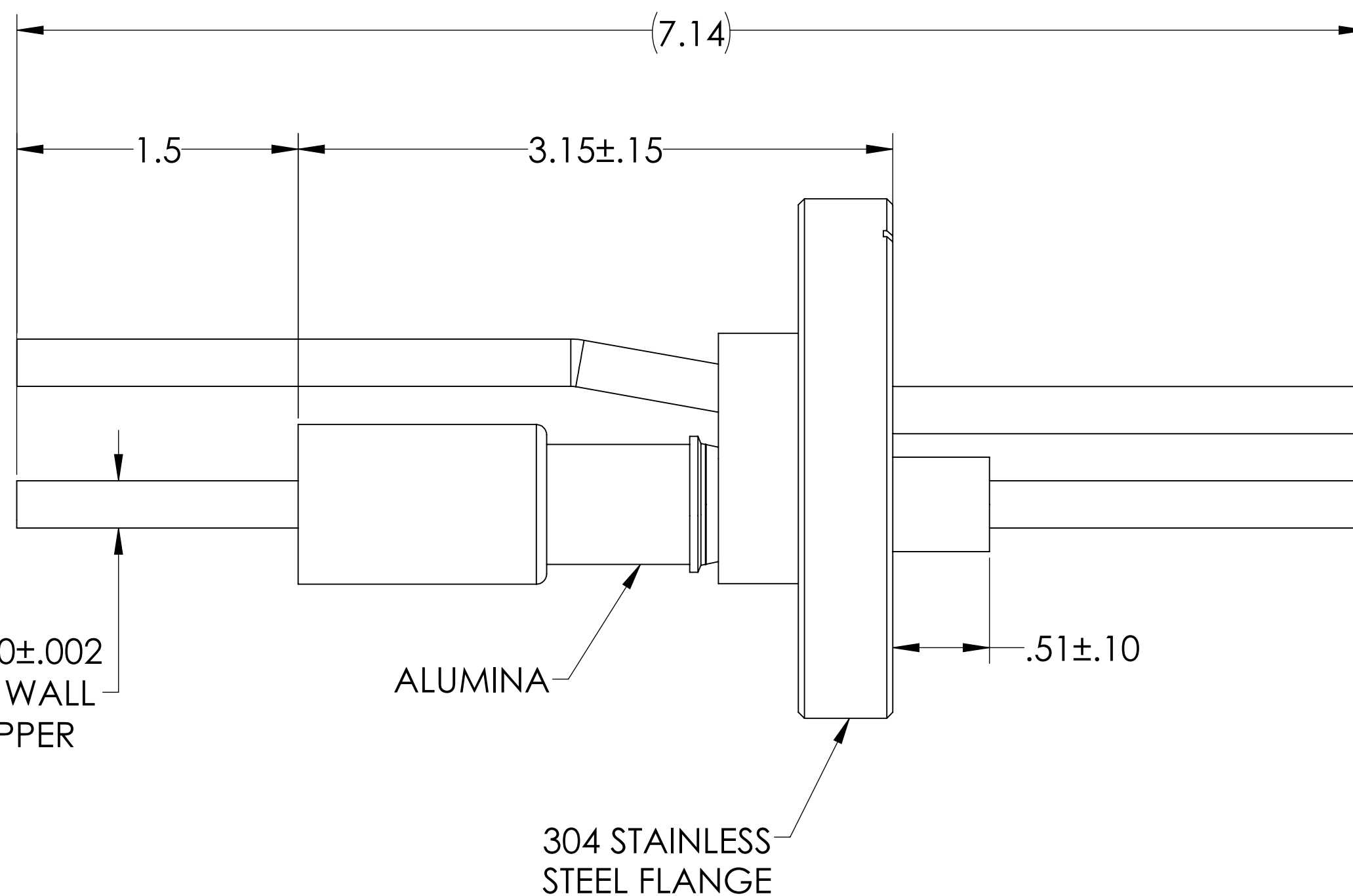
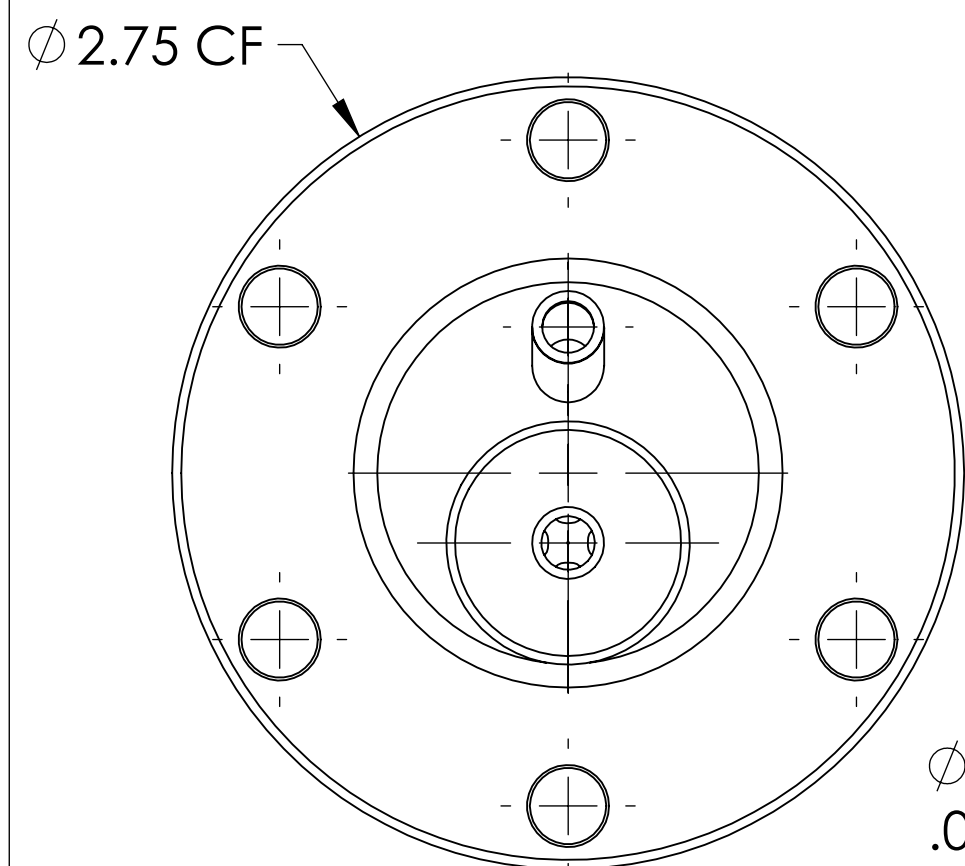
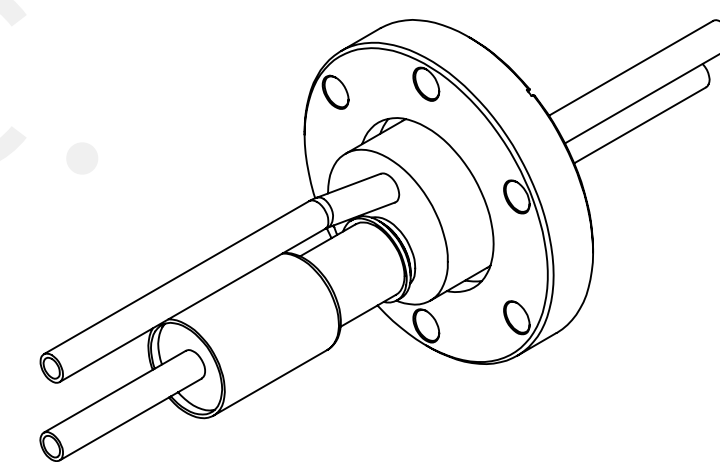
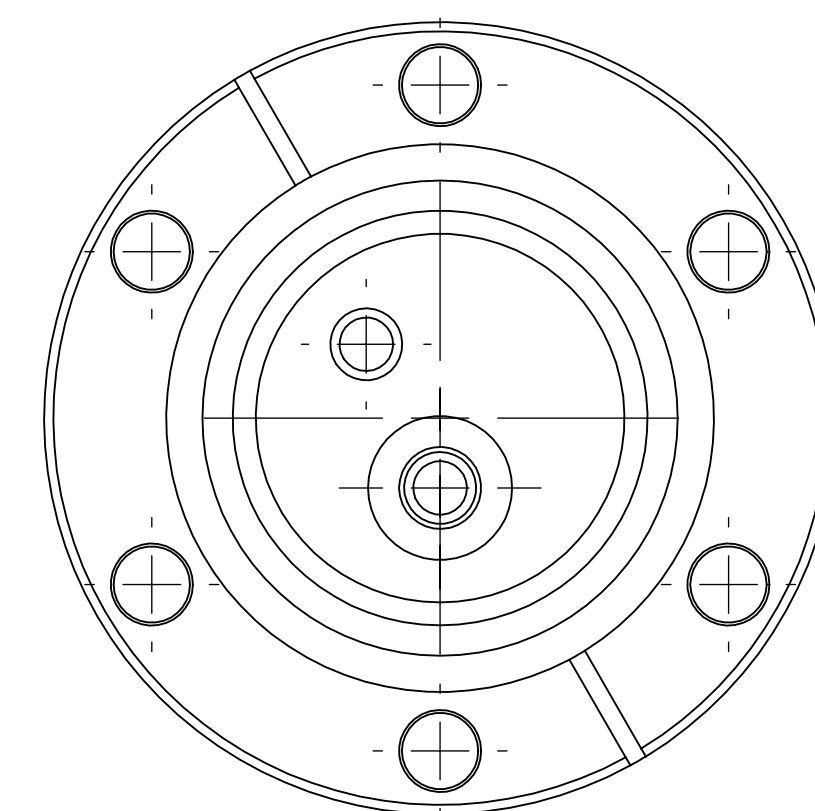


# MPF PRODUCTS INC.



Ø .250±.002  
.032" WALL  
COPPER



**NOTE:**

1. VOLTAGE: 10,000 VOLTS DC
2. CURRENT: N/A
3. TEMPERATURE RATING: -100 TO 450°C

RF Power Feedthrough, 10000 Volts, 20 KW @ 13.5 MHz, 2 Tubes, 0.25" Copper Conductor, 2.75" Conflat Flange, UHV Rated, Bakeable to 450°C

UNLESS OTHERWISE SPECIFIED:		QUOTATION #		N/A	
DIMENSIONS ARE IN INCHES TOLERANCES:		NAME	DATE	MPF PRODUCTS INC.	
ANGULAR: MACH ± 1/2°		DRAWN	9/11/2015		
TWO PLACE DECIMAL ± .030		CHECKED	9/11/2015		
THREE PLACE DECIMAL ± .015		ENG APPR.	9/11/2015		
MATERIAL		THIRD ANGLE:		RF POWER FEEDTHROUGH, 10 KV, 20 KW, 2 TUBES, 2.75" CONFLAT FLANGE	
FINISH		APPLICATION			
PLATING		NEXT ASSY USED ON			
		SURFACE FINISH: 63/ OR BETTER			
		UNLESS OTHERWISE SPECIFIED:		DOWNLOADED FROM MPFPI.COM	
		ALL DIAMETERS CONCENTRIC WITHIN .005. REMOVE ALL BURRS AND SHARP EDGES		DWG. NO. A1724-1-CF	
				REV.	
				Wednesday, June 30, 2021 2:46:25 PM	