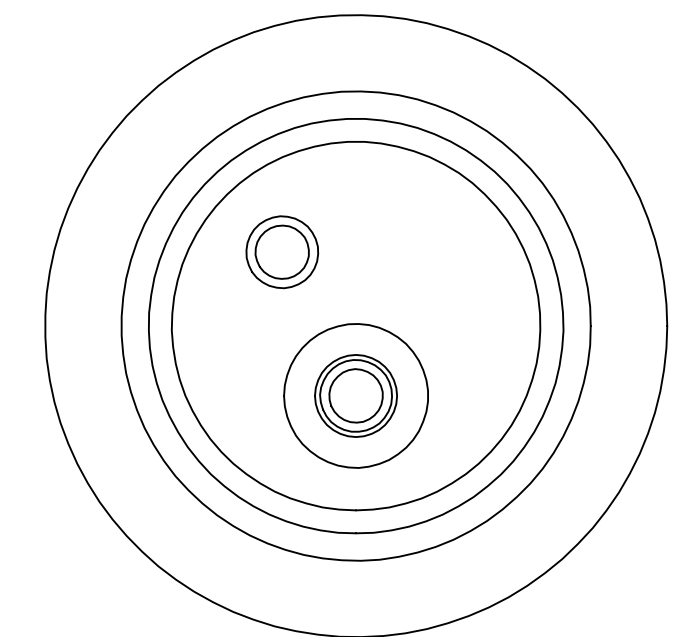
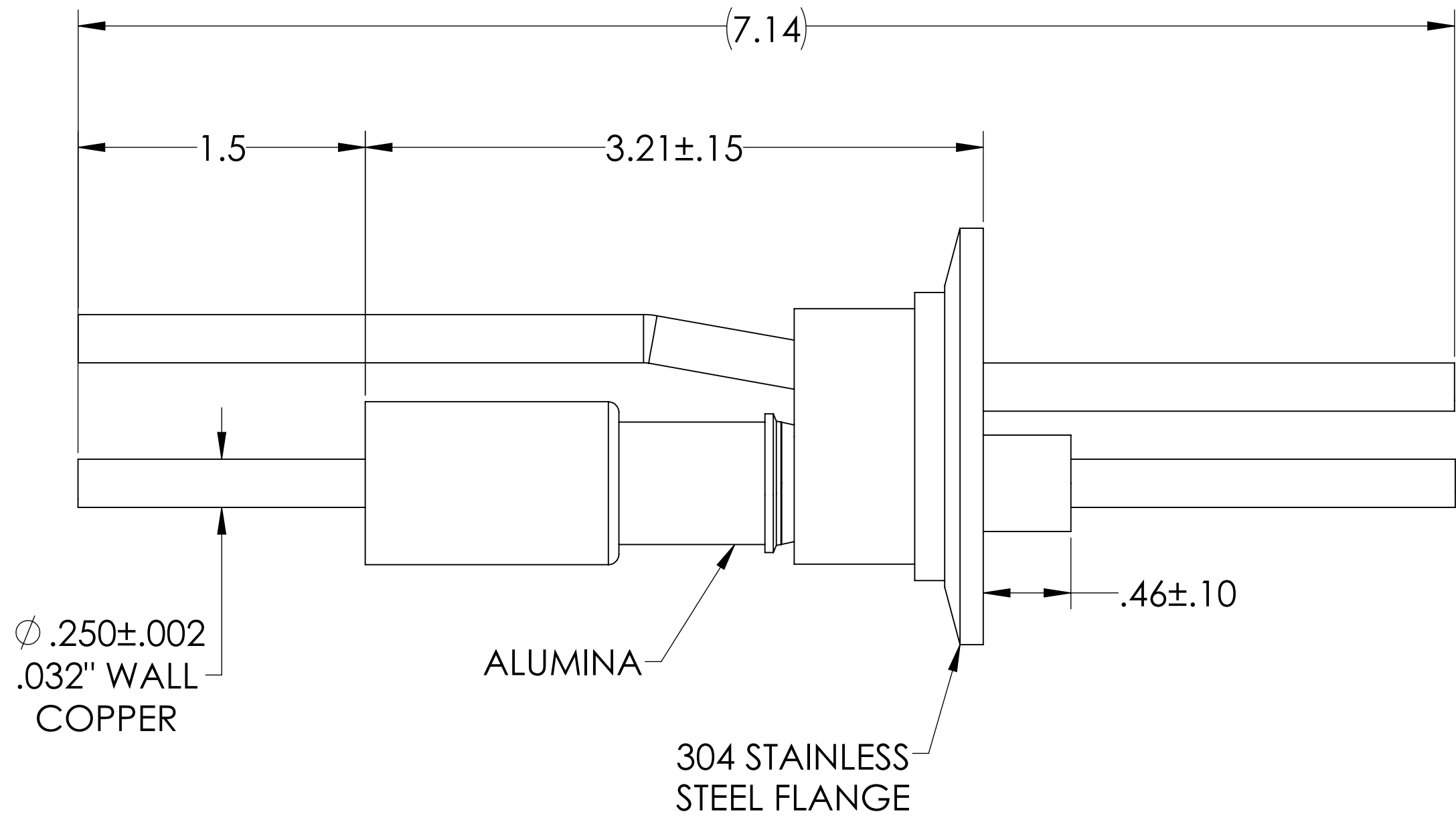
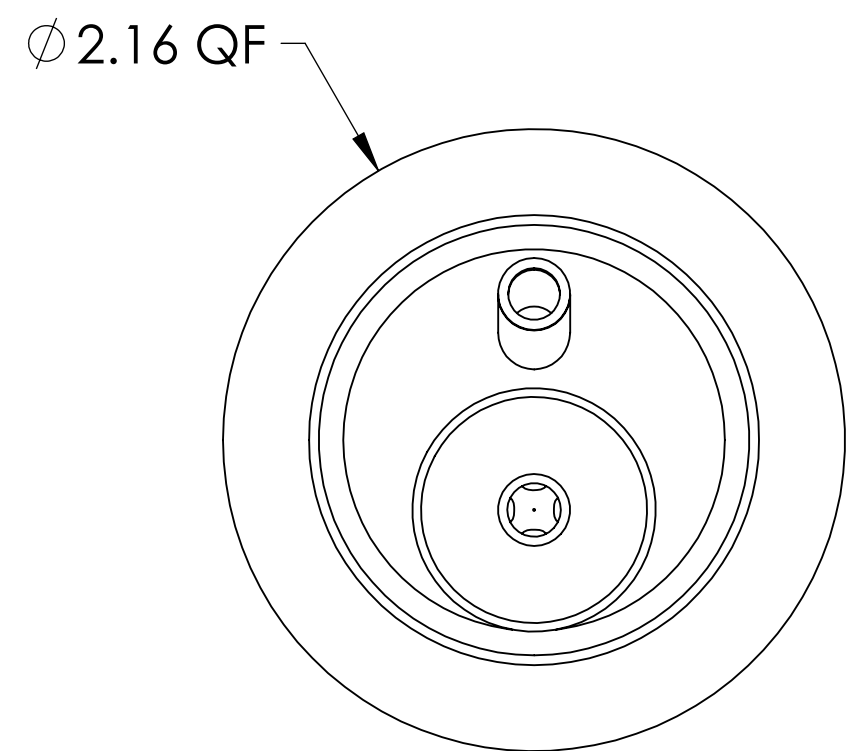
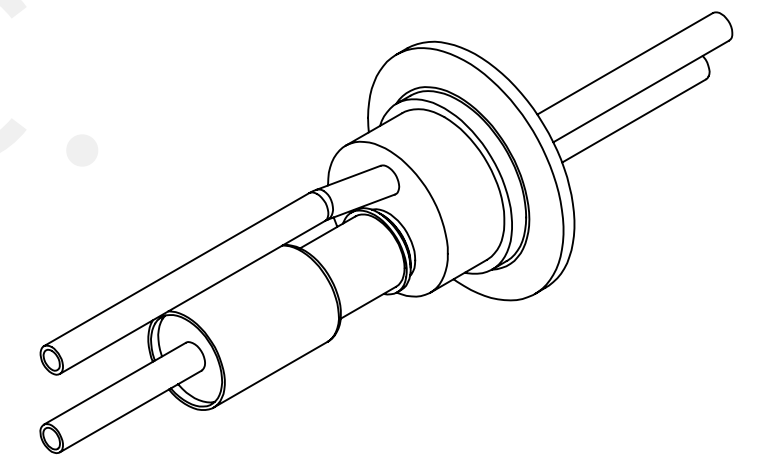


MPF PRODUCTS INC.



- NOTE:
1. VOLTAGE: 10,000 VOLTS DC
 2. CURRENT: N/A
 3. TEMPERATURE RATING: -100 TO 450°C

RF Power Feedthrough, 10000 Volts, 20 KW @ 13.5 MHz, 2 Tubes, 0.25" Copper Conductor, 2.16" QF/KF FLANGE, UHV Rated, Bakeable to 450°C

UNLESS OTHERWISE SPECIFIED:		QUOTATION #		N/A	
DIMENSIONS ARE IN INCHES TOLERANCES:		NAME	DATE	MPF PRODUCTS INC.	
ANGULAR: MACH ± 1/2°		DRAWN	9/11/2015		
TWO PLACE DECIMAL ± .030		CHECKED	9/11/2015		
THREE PLACE DECIMAL ± .015		ENG APPR.	9/11/2015		
MATERIAL		THIRD ANGLE:		RF POWER FEEDTHROUGH, 10 KV, 20 KW, 2 TUBES, 2.16" QF/KF FLANGE DWG. NO. A1725-1-QF REV.	
FINISH					
PLATING		APPLICATION NEXT ASSY USED ON			
		SURFACE FINISH: 63/ OR BETTER UNLESS OTHERWISE SPECIFIED: ALL DIAMETERS CONCENTRIC WITHIN .005. REMOVE ALL BURRS AND SHARP EDGES			
		TITLE: RF POWER FEEDTHROUGH, 10 KV, 20 KW, 2 TUBES, 2.16" QF/KF FLANGE DOWNLOADED FROM MPFPI.COM DWG. NO. A1725-1-QF REV.		WEDNESDAY, JUNE 30, 2021 2:46:59 PM	