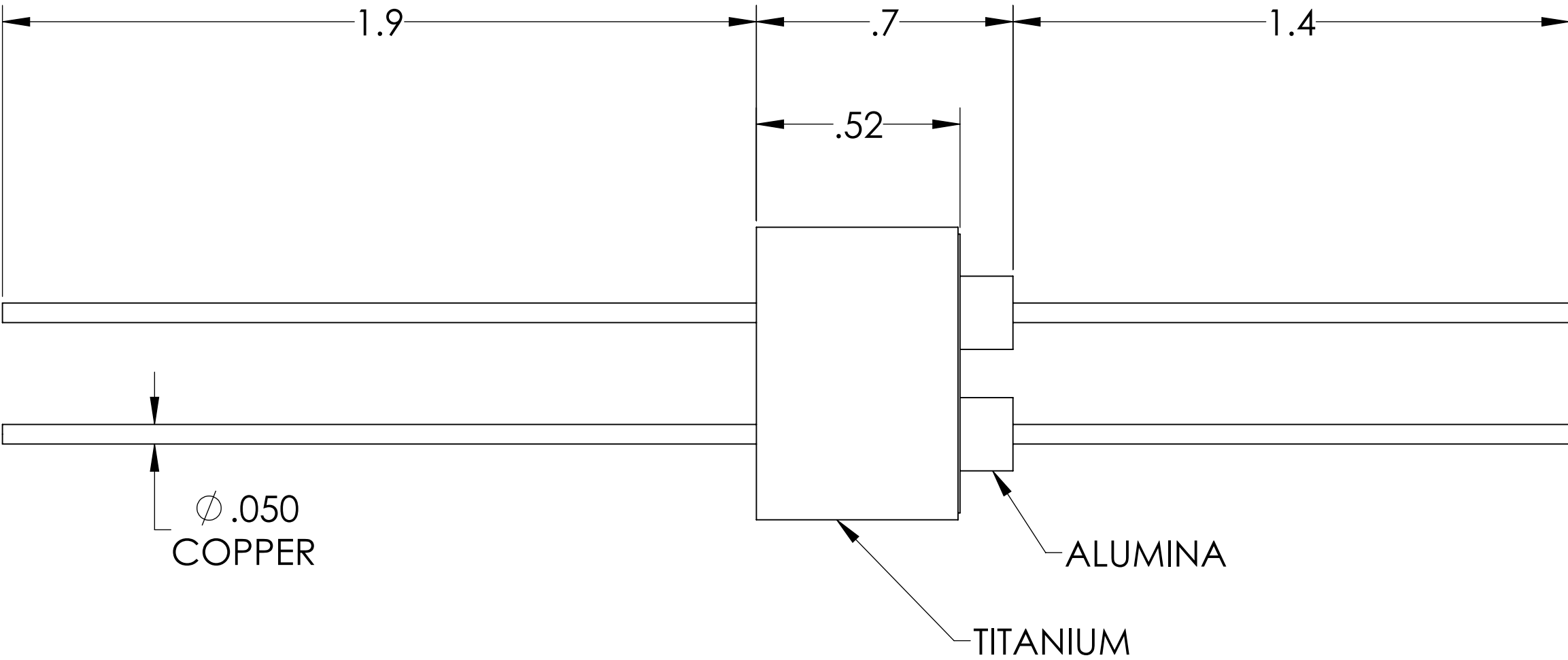
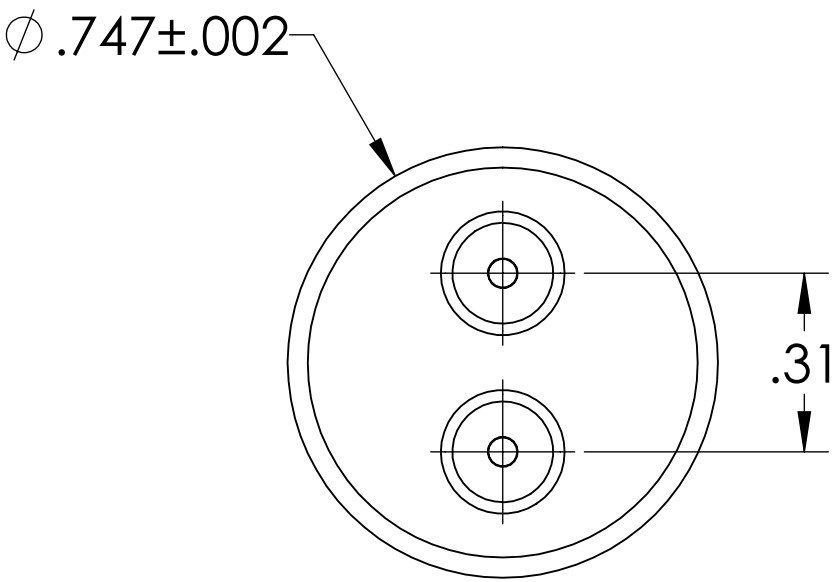
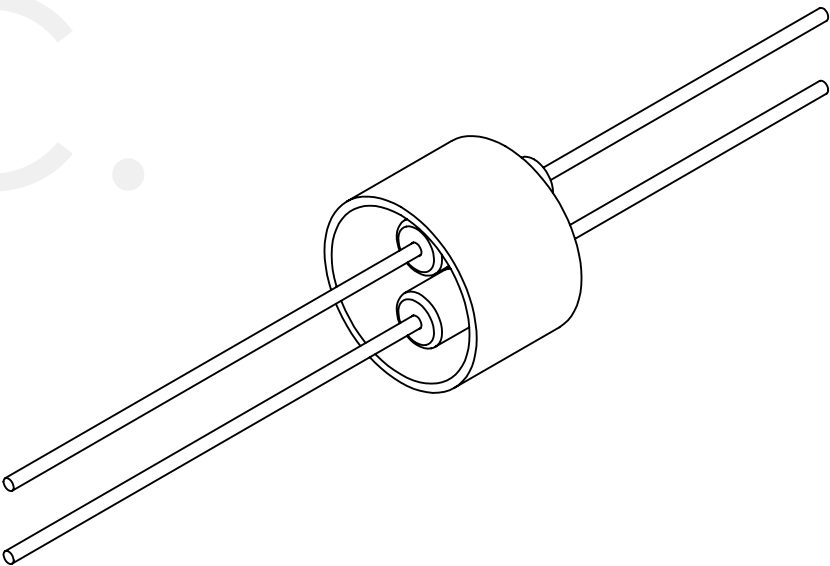
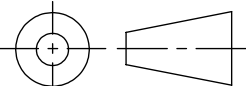


MPF PRODUCTS INC.



- NOTE:
- 1. VOLTAGE: 1000 VOLTS DC
 - 2. CURRENT: SEE TABLE
 - 3. TEMPERATURE RATING: -100 TO 450°C

Non-Magnetic Power Feedthrough, 1000 Volts, 2 Pins, 0.050" Copper Conductor, 0.747" Dia Titanium Weld Adapter, UHV Rated, Bakeable to 450°C

UNLESS OTHERWISE SPECIFIED:		QUOTATION #		N/A	
DIMENSIONS ARE IN INCHES TOLERANCES: ANGULAR: MACH ± 1/2° TWO PLACE DECIMAL ± .030 THREE PLACE DECIMAL ± .015			NAME	DATE	MPF PRODUCTS INC. TITLE: POWER FEEDTHROUGH, 1000 VOLTS, 2 PINS, 0.747" TITANIUM WELD ADAPTER DOWNLOADED FROM MPFPI.COM DWG. NO. A23061-1-W REV
		DRAWN	WJ	9/11/2015	
		CHECKED		9/11/2015	
		ENG APPR.	WJ	9/11/2015	
MATERIAL		THIRD ANGLE:			
					
		APPLICATION			
		NEXT ASSY USED ON			
FINISH		SURFACE FINISH: 63 OR BETTER			
		UNLESS OTHERWISE SPECIFIED:			
PLATING		ALL DIAMETERS CONCENTRIC WITHIN .005. REMOVE ALL BURRS AND SHARP EDGES			
		Monday, December 6, 2021 9:37:15 AM			