

MPF PRODUCTS, INC.

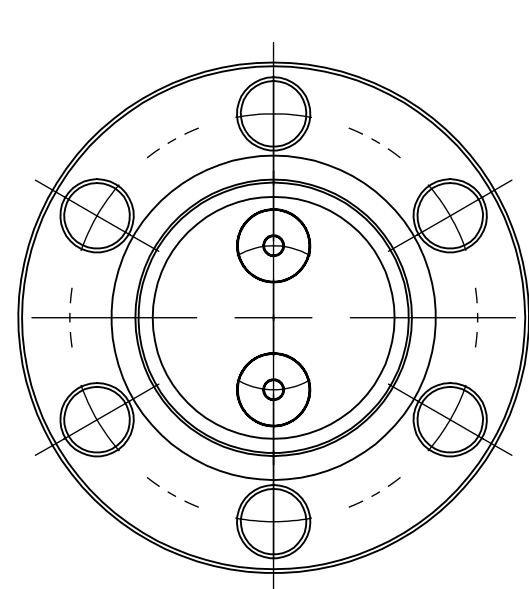
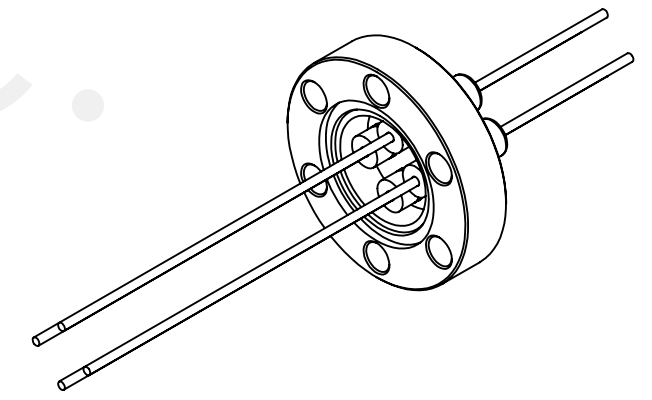


FIG. I

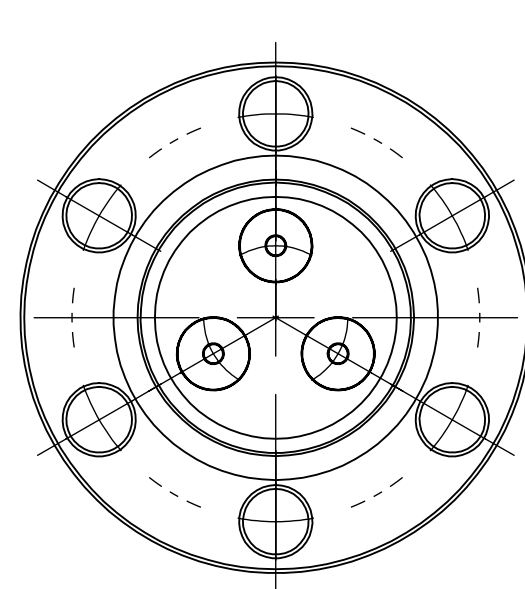


FIG. II

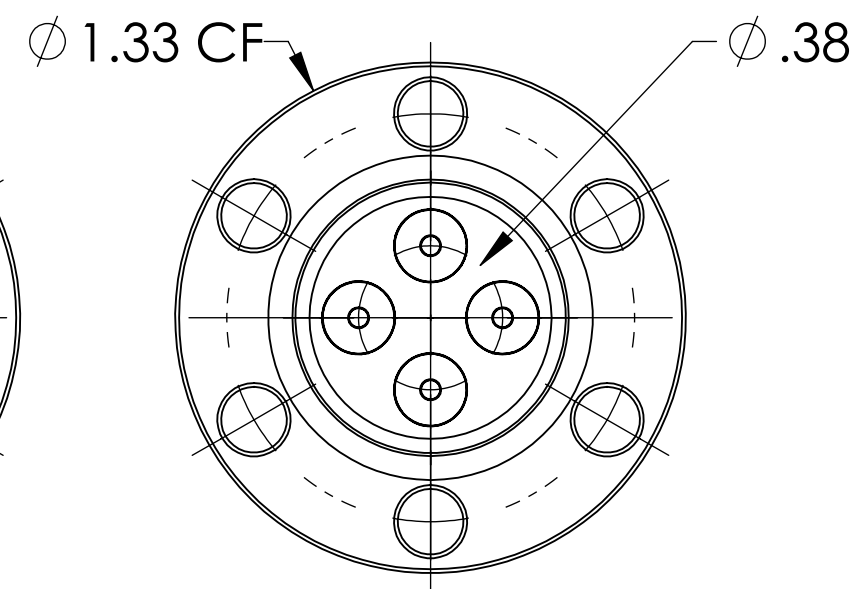
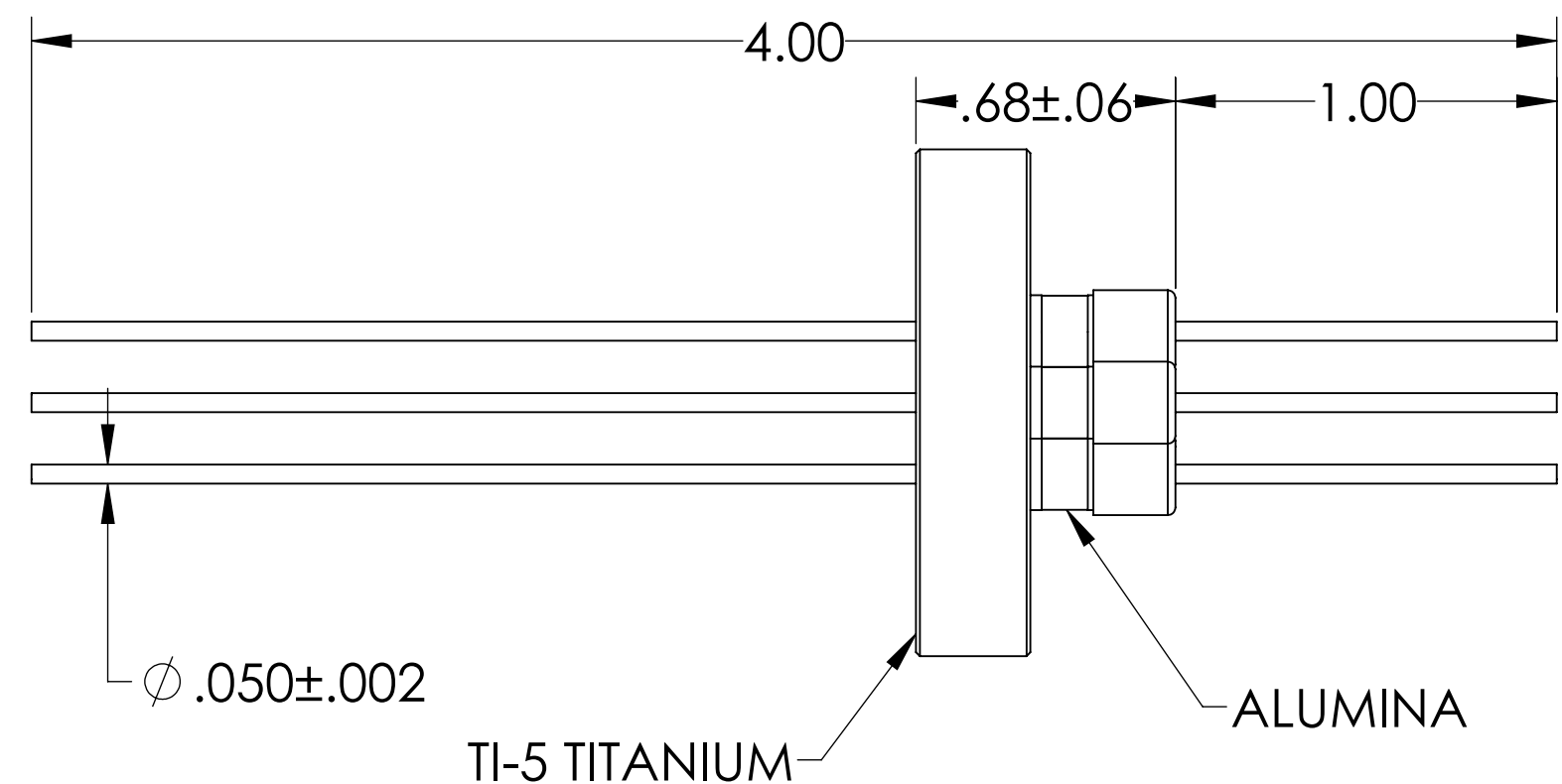


FIG. III



PART NUMBER	NUMBER OF CONDUCTORS	FIG. NUMBER
A23183-1-CF	2	I
A23183-2-CF	3	II
A23183-3-CF	4	III

NOTE:

- VOLTAGE: 2KV PIN TO GROUND, 1KV PIN TO PIN
- CURRENT: 25 AMPS
- TEMPERATURE RATING: -100°C TO 450°C

Power Feedthrough, 2KV Pin To Ground, 1KV Pin To Pin, 0.050" Copper Conductor, 1.33" Dia Grade 5 Titanium Conflat Flange, UHV Rated, Bakeable To 450°C

UNLESS OTHERWISE SPECIFIED:		QUOTATION #	
DIMENSIONS ARE IN INCHES TOLERANCES:		NAME	DATE
ANGULAR: MACH ± 1/2°		AC	12/7/2021
TWO PLACE DECIMAL ± .030		CHECKED	JB 12/7/2021
THREE PLACE DECIMAL ± .015		ENG APPR.	AC 12/7/2021
MATERIAL	THIRD ANGLE:	MPF PRODUCTS INC.	
		TITLE:	
	APPLICATION	TITANIUM POWER FEEDTHROUGH	
	NEXT ASSY	2KV DC PIN TO GROUND	
	USED ON	1KV DC PIN TO PIN	
FINISH	SURFACE FINISH: 63 OR BETTER	050" COPPER CONDUCTORS	
PLATING	UNLESS OTHERWISE SPECIFIED:	1.33 TITANIUM CONFLAT FLANGE	
	ALL DIAMETERS CONCENTRIC WITHIN .005. REMOVE ALL BURRS AND SHARP EDGES	DOWNLOADED FROM MPFPI.COM	
		DWG. NO.	REV
		A23183	
		Monday, December 2, 2024 2:29:24 PM	